
Transmission Identification

Check

1. Using the scan tool, select Powertrain, Transmission and Transmission Characterization / Solenoid IDN from the toolbox icon and follow the instructions displayed on the scan tool. The Transmission Characterization / Solenoid IDN screen displays solenoid body identification information:
 - Solenoid body identification is a 12-digit number
 - Solenoid body strategy is a 13-digit number. If the solenoid body strategy field is blank, the module contains a partial transmission solenoid body strategy. This is due to a corrupt or missing file at the time the programmable parameters were completed.
2. **NOTE:** *The 13-digit solenoid body strategy number consists of only numbers. Letters are not used.*

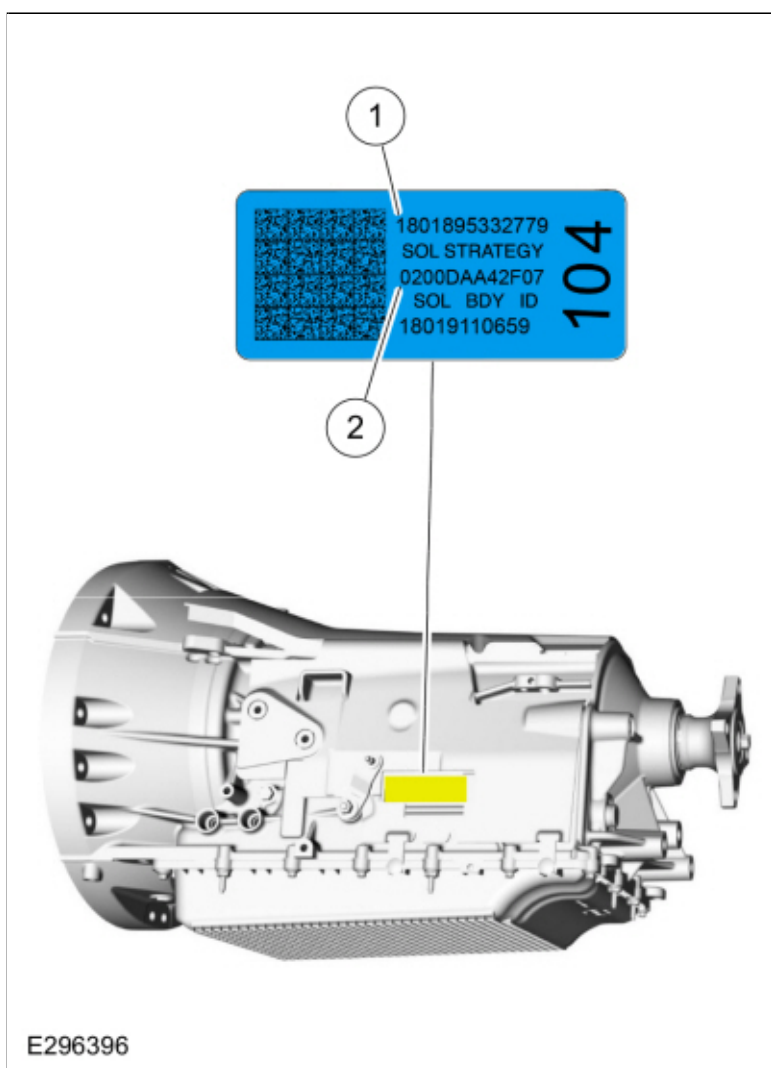
Compare the solenoid body identification and strategy to the solenoid body identification tag located on the left side of the transmission case.

NOTE:

- **Original Solenoid Body Service Tag**

3.
 1. 13 - digit solenoid body strategy
 2. 12 - digit solenoid body identification



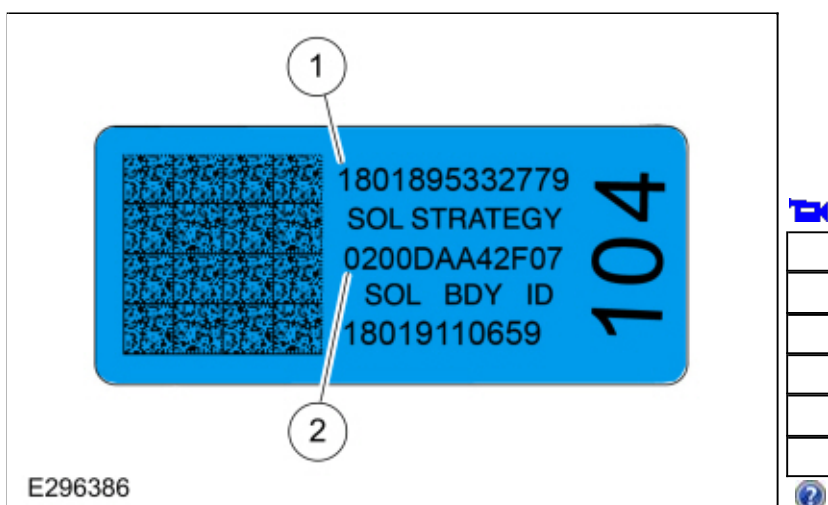


4. If the solenoid body identification and strategy displayed on the scan tool match the solenoid body identification tag or replacement tag, then the solenoid body identification and strategy are correct for this transmission and a solenoid body strategy data download is not required. If the solenoid body identification tag or replacement tag is missing or damaged so it is not readable or does not match the identification or strategy displayed on the scan tool, remove the transmission fluid pan and filter and locate the 13-digit solenoid body strategy etched on the main control casting.
Refer to: [Transmission Fluid Pan, Gasket and Filter](#) (307-01 Automatic Transmission - 10-Speed Automatic Transmission - 10R80, Removal and Installation).

NOTE:

- **Replacement Solenoid Body Service Tag**

5.
 1. 13 - digit solenoid body strategy
 2. 12 - digit solenoid body identification

**NOTE:**

- **Main Control Solenoid Body Strategy**
6. **NOTICE:** The 13-digit solenoid body strategy number displayed on the scan tool must match the solenoid body strategy number etched on the main control. If the numbers do not match, damage to the transmission or driveability concerns can occur.

NOTICE: If the new main control was not supplied with a replacement solenoid strategy identification tag, **DO NOT INSTALL** the main control as all required programming information is missing.

Compare the solenoid body strategy identification etched on the main control to the solenoid strategy identification tag on the transmission case. If the solenoid body strategy identification etched on the main control does not match the solenoid strategy identification tag then a solenoid body strategy data download is required. If the solenoid body strategy etched on the main control does match the solenoid strategy identification tag on the transmission case but does not match the solenoid body identification and strategy displayed on the scan tool, then a solenoid body strategy data download is also required.

