

Electronic Locking Differential (ELD) Solenoid

Special Tool(s) / General Equipment

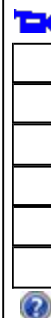
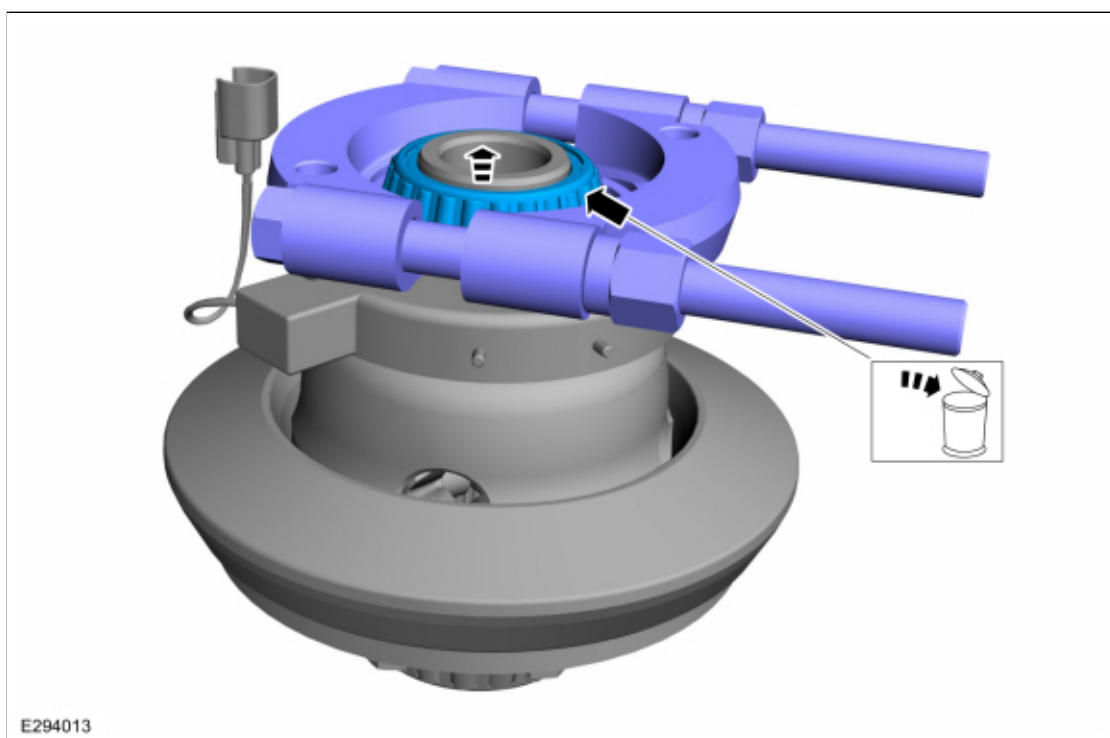
Hydraulic Press
Bearing Separator

Removal

⚠ WARNING: The engine stand is equipped with a self-lock mechanism, however, if the rear differential is tilted, the self-lock mechanism could become inoperative. If the rear differential unexpectedly rotates, it could cause injury, therefore do not maintain the rear differential tilted. When turning the rear differential, grasp the rotation handle firmly.

NOTE: Removal steps in this procedure may contain installation details.

1. Remove the differential carrier.
Refer to: [Differential Carrier](#) (205-02 Rear Drive Axle/Differential - Vehicles With: Dana M220, Removal and Installation).
2. Using the general equipments, remove and discard the differential side bearing.
Use the General Equipment: Bearing Separator
Use the General Equipment: Hydraulic Press

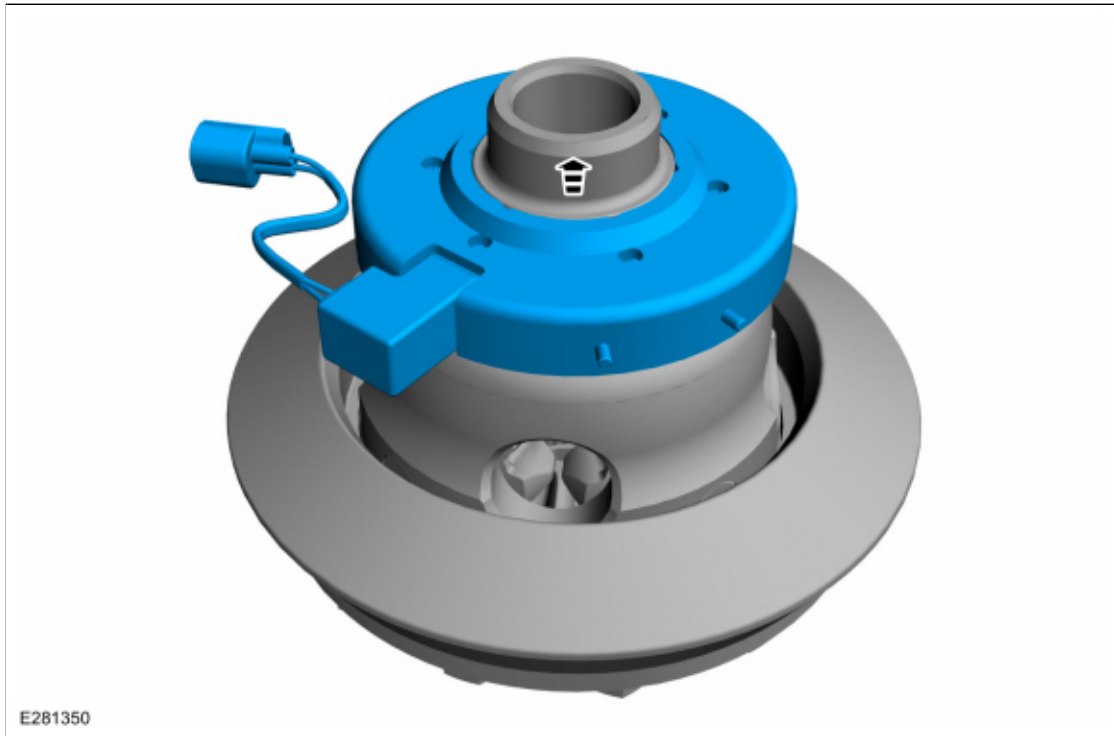


3. **NOTICE:** Take extra care not to damage the component.

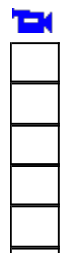
NOTE: Note the orientation of ELD in the differential carrier housing during removal.

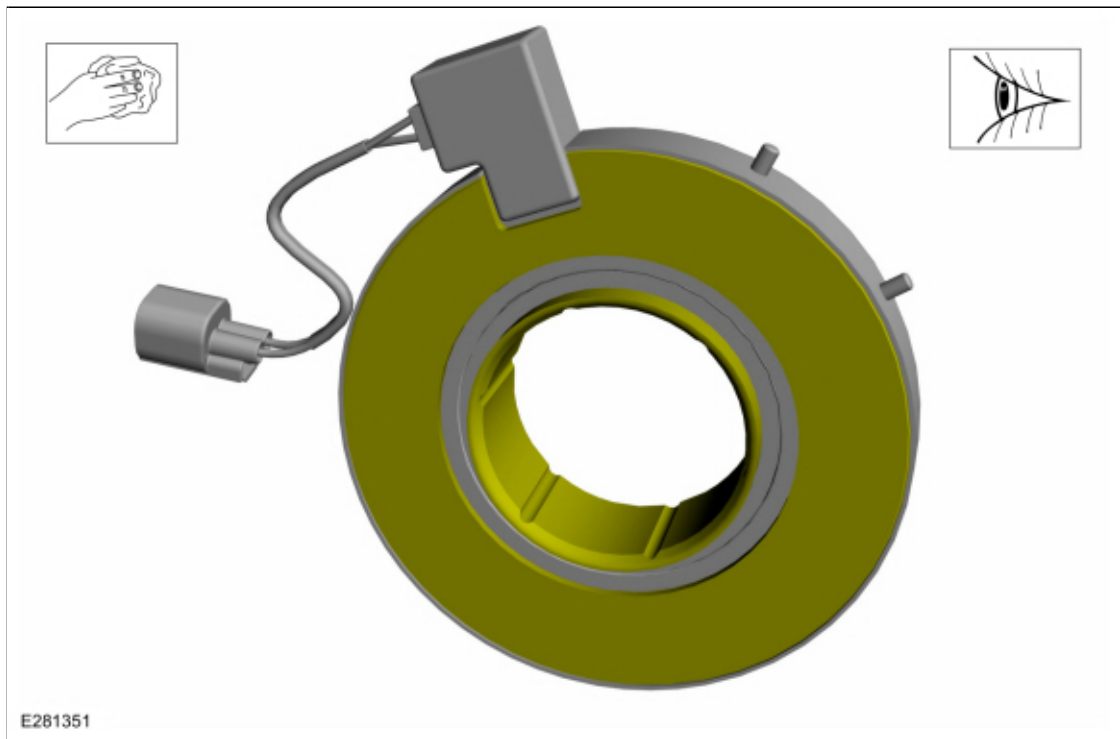
NOTE: Make sure the ELD is oriented in the differential carrier housing during installation.

Remove the locking plate and the ELD solenoid.



4. Clean and inspect the ELD solenoid.





Installation

1. To install, reverse the removal procedure.
2. Check the differential ring gear backlash.
Refer to: [Ring Gear Backlash Adjustment](#) (205-02 Rear Drive Axle/Differential - Vehicles With: Dana M220, General Procedures).

Copyright © 2019 Ford Motor Company

