


205-02 Rear Drive Axle/Differential - Vehicles With: Dana M220  
Disassembly and Assembly

2019 Ranger  
Procedure revision date: 11/27/2018

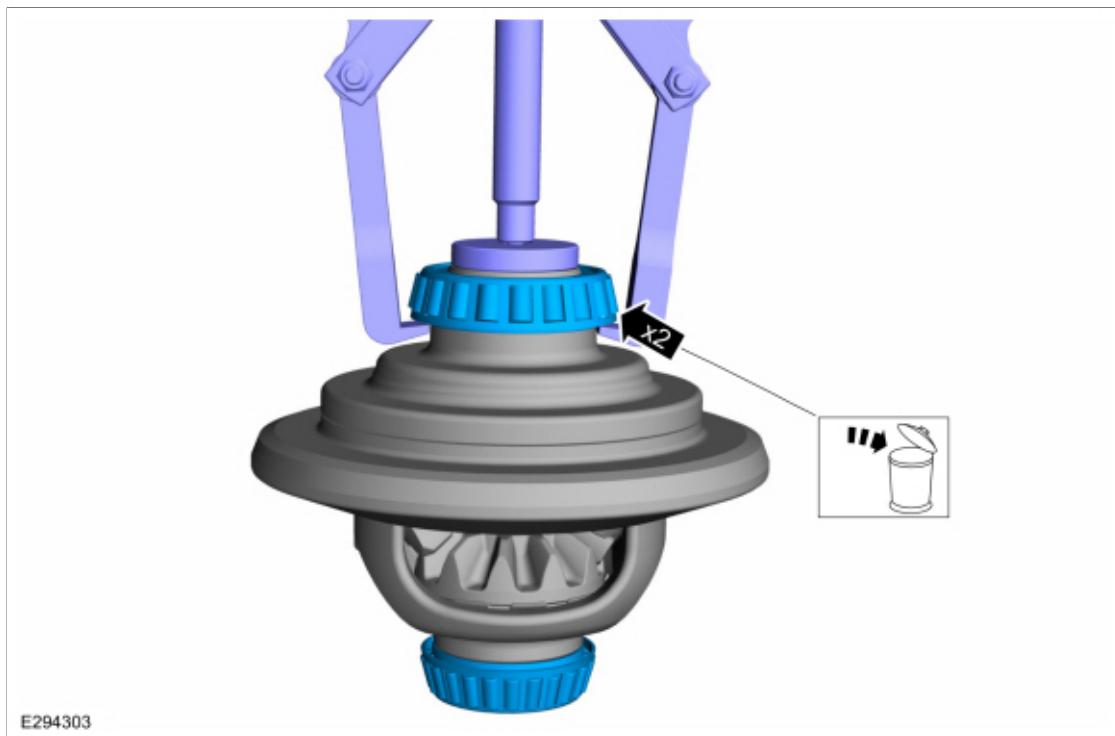
## Differential Carrier

### Special Tool(s) / General Equipment

 <p>E294702</p>	<p><a href="#">205-1058</a> Installer, Differential Side Bearing</p>
Two Leg Puller	

### DISASSEMBLY

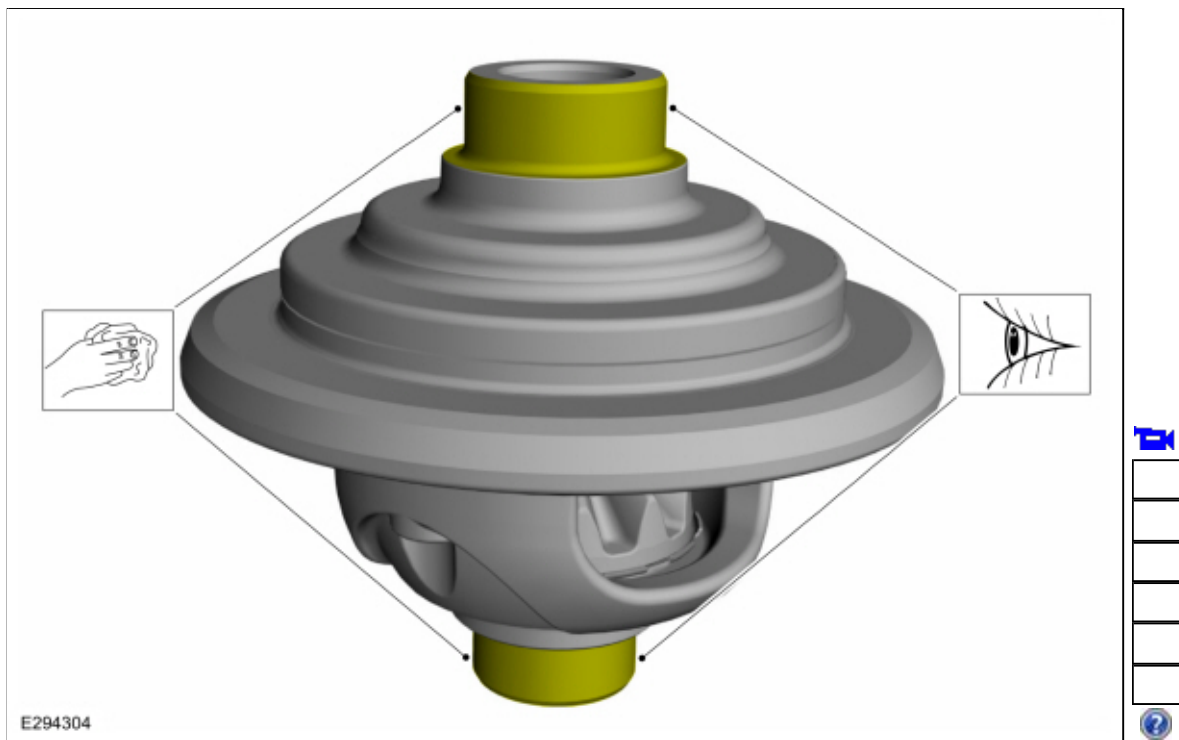
1. Remove the differential carrier.  
Refer to: [Differential Carrier](#) (205-02 Rear Drive Axle/Differential - Vehicles With: Dana M220, Removal and Installation).
2. Both side.  
Using the general equipment, remove and discard the differential bearings.  
Use the General Equipment: Two Leg Puller



3. **NOTICE:** Make sure the mating surfaces are clean and free of oil, dust and debris.

**NOTE:** Use solvent and Scotch-Brite® pads to remove.

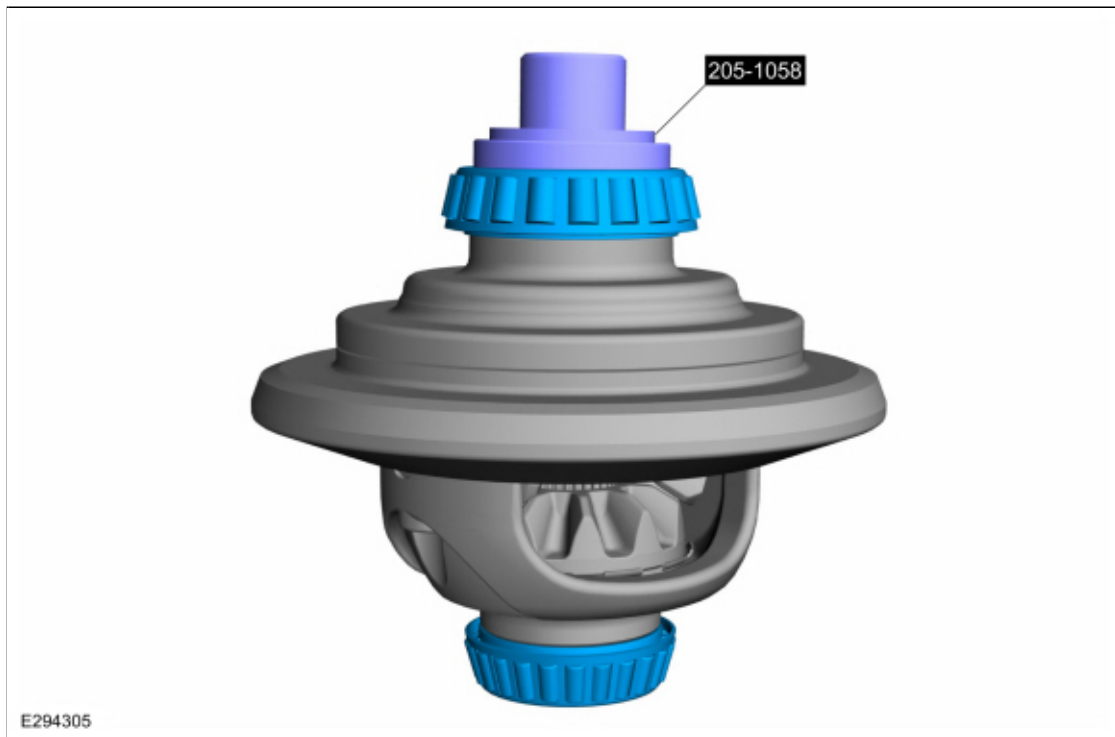
Clean and inspect the differential carrier bearing mating surface.



## ASSEMBLY

1. Both side.  
Using the special tool, install the new differential bearings.  
Use Special Service Tool: [205-1058 Installer, Differential Side Bearing](#).





2. Check the differential ring gear backlash.  
Refer to: [Ring Gear Backlash Adjustment](#) (205-02 Rear Drive Axle/Differential - Vehicles With: Dana M220, General Procedures).
3. Install the differential carrier.  
Refer to: [Differential Carrier](#) (205-02 Rear Drive Axle/Differential - Vehicles With: Dana M220, Removal and Installation).

Copyright © 2019 Ford Motor Company

