


205-02 Rear Drive Axle/Differential - Vehicles With: Dana M220
Disassembly and Assembly

2019 Ranger
Procedure revision date: 11/27/2018

Differential Carrier - Vehicles With: Electronic Locking Differential (ELD)

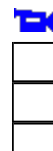
Special Tool(s) / General Equipment

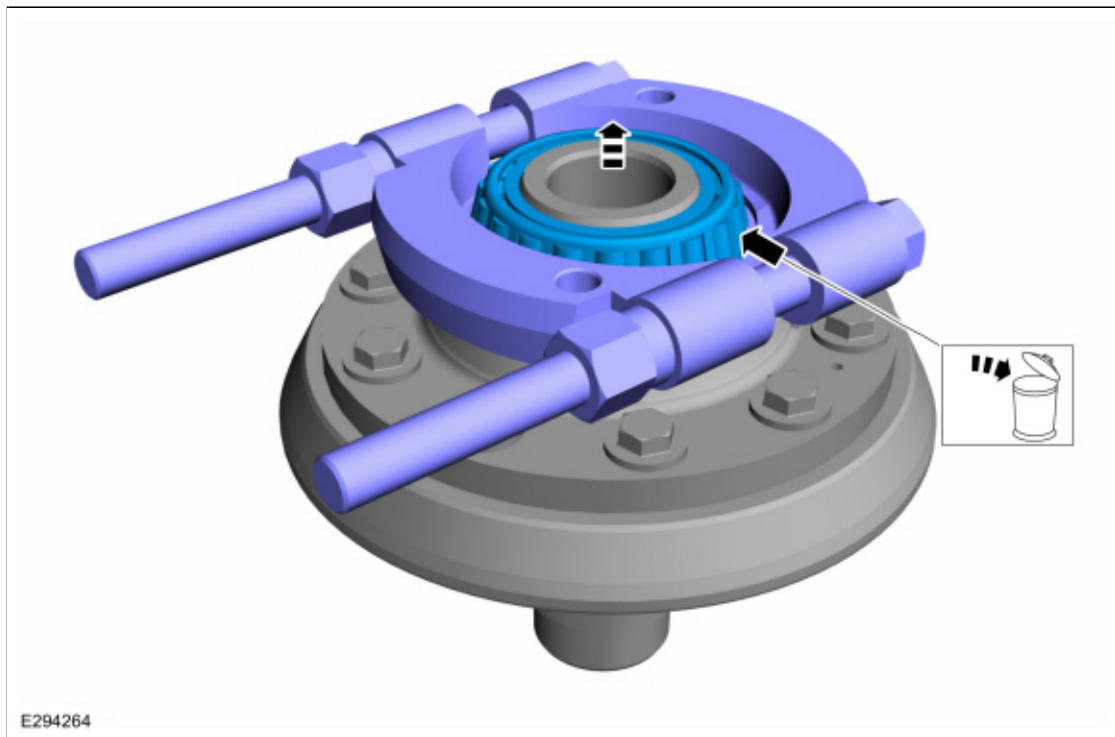
 E294702	205-1058 Installer, Differential Side Bearing
Hydraulic Press	Punch
Copper Hammer	Bearing Separator

DISASSEMBLY

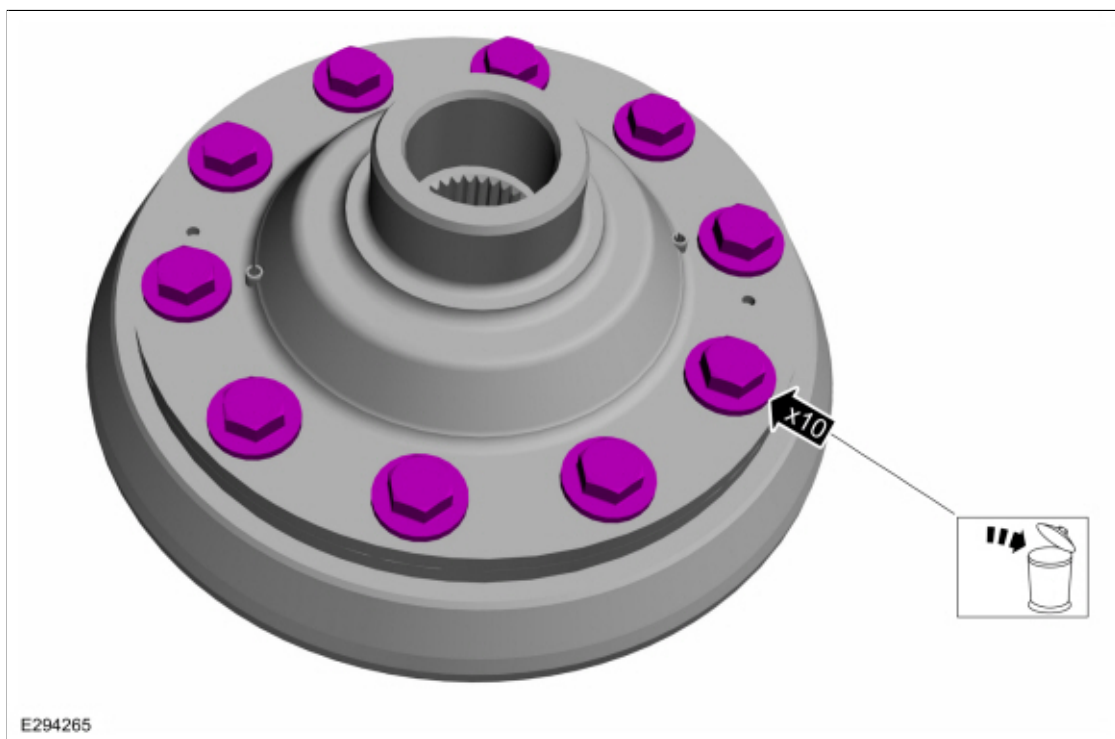
⚠ WARNING: The engine stand is equipped with a self-lock mechanism, however, if the rear differential is tilted, the self-lock mechanism could become inoperative. If the rear differential unexpectedly rotates, it could cause injury, therefore do not maintain the rear differential tilted. When turning the rear differential, grasp the rotation handle firmly.

1. Remove the ELD solenoid.
Refer to: [Electronic Locking Differential \(ELD\) Solenoid](#) (205-02 Rear Drive Axle/Differential - Vehicles With: Dana M220, Removal and Installation).
2. Using the general equipment, remove and discard the differential side bearing.
Use the General Equipment: Hydraulic Press
Use the General Equipment: Bearing Separator





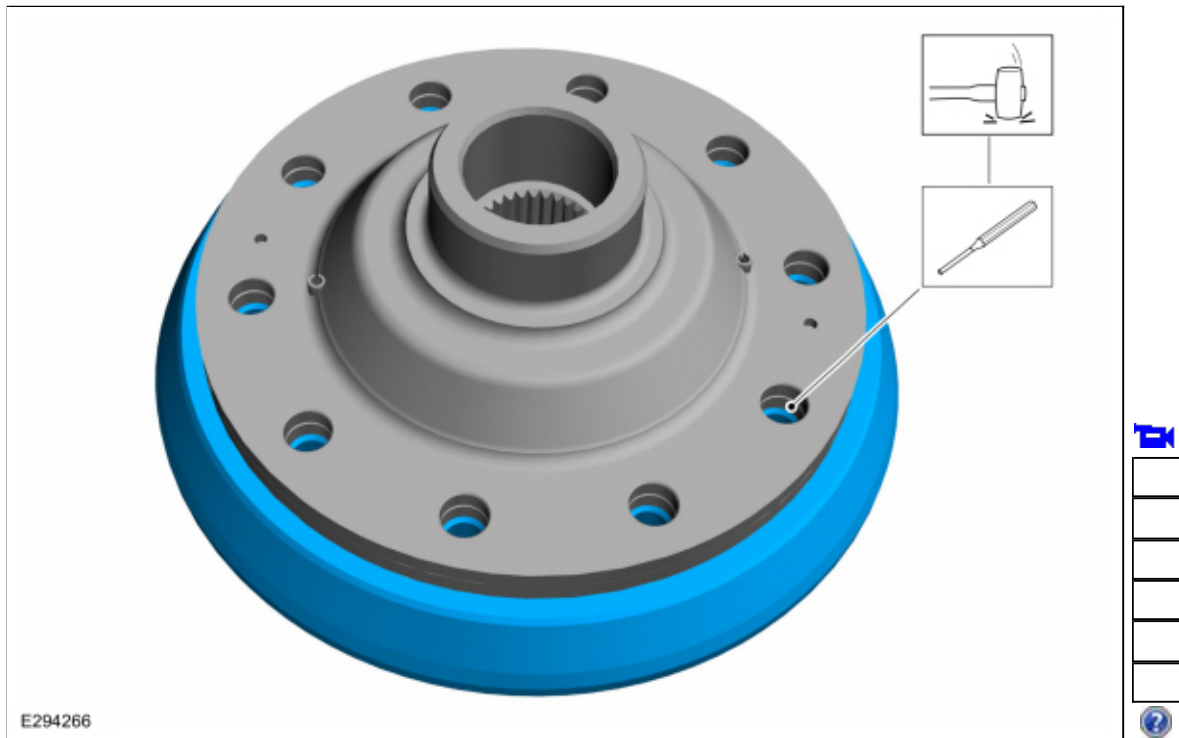
3. Remove and discard the ring gear bolts.



4. **NOTICE:** Care should be taken not to damage the differential ring gear bolt hole threads.

Using the general equipment, remove the ring gear.
Use the General Equipment: Punch

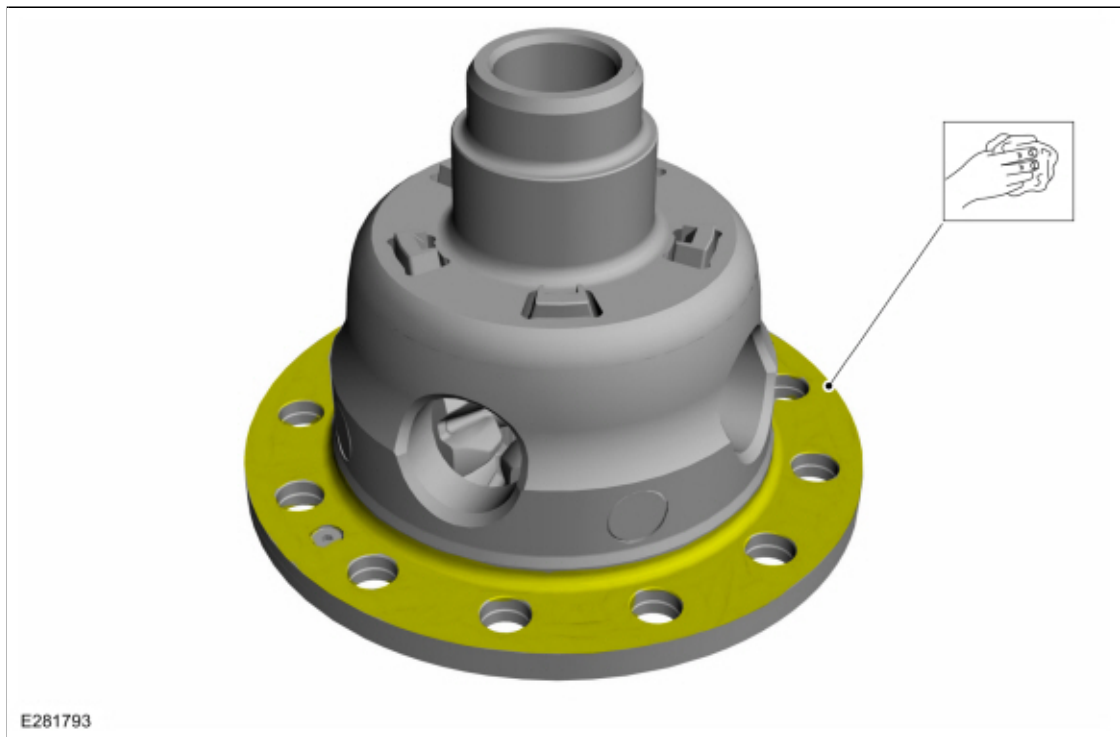
Use the General Equipment: Copper Hammer



5. **NOTICE:** The differential flange and ring gear flange must be free of any old retaining compound material. Make sure both surfaces are clean and free of oil, dust and debris. Failure to clean the surfaces can result in ring gear runout concerns.

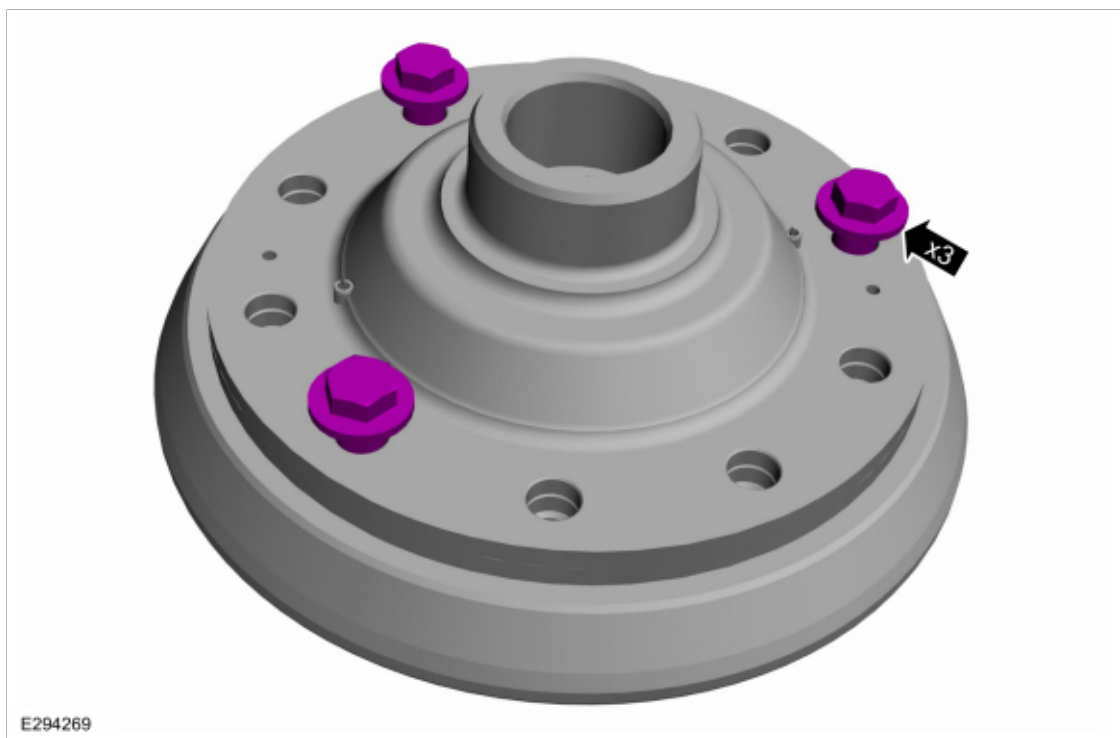
NOTE: Use solvent and Scotch-Brite® pads to remove.

Clean all traces of the old retaining compound material from the differential flange.



ASSEMBLY

1. Install the ring gear onto the differential carrier. Align the ring gear using 3 new bolts. Using the general equipment, press the ring gear into place.
Use the General Equipment: Hydraulic Press

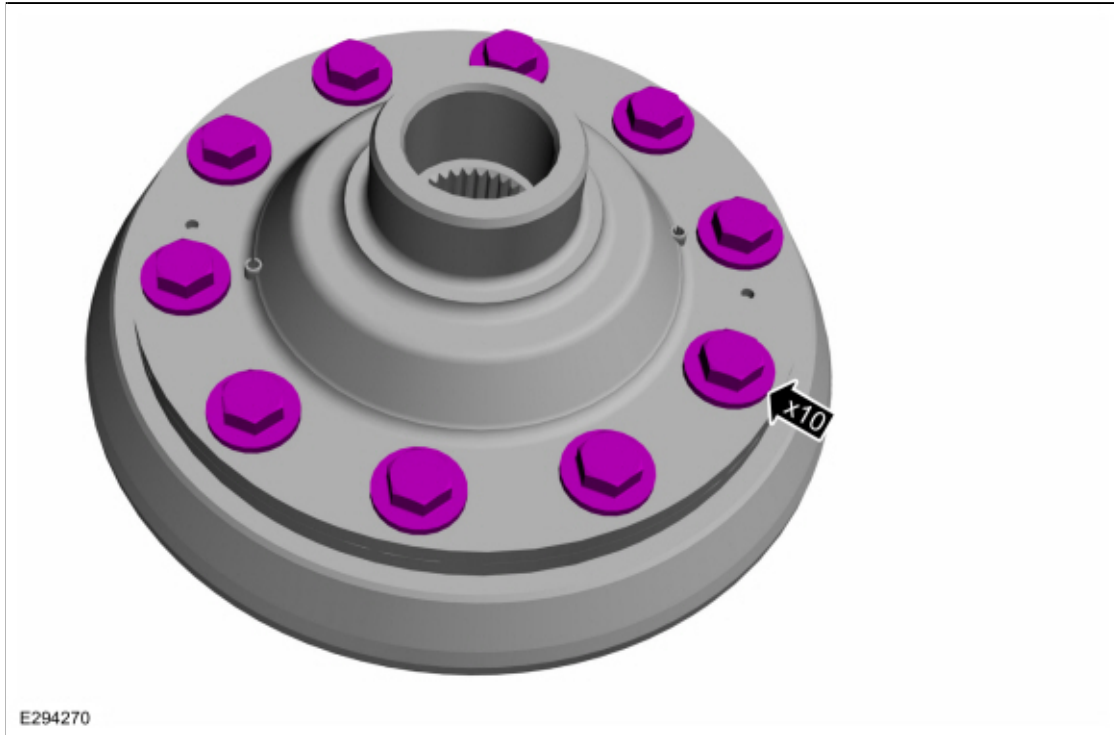


2. **NOTE:** *The component has a right-hand thread.*

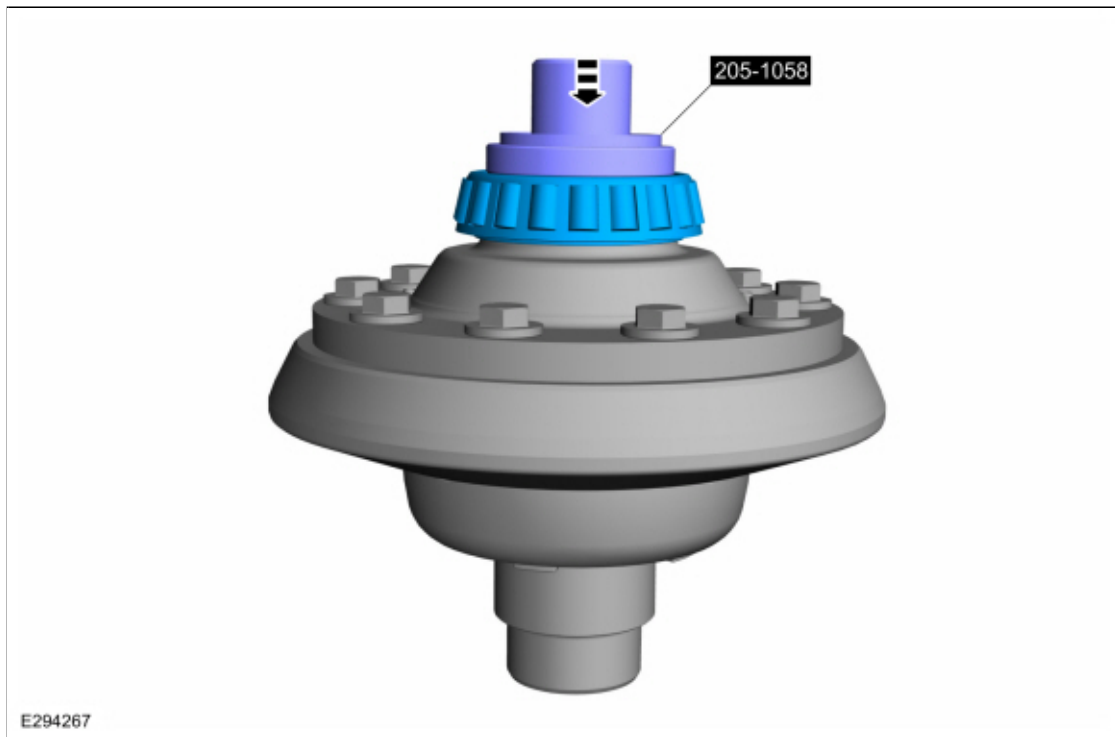
NOTE: *Tighten the ring gear bolts in a cross pattern.*

Install the ring gear bolts.

Torque: 96 lb.ft (130 Nm)



3. Using the special tool, install the new differential side bearing.
Use Special Service Tool: [205-1058 Installer, Differential Side Bearing](#).



4. Check the differential ring gear backlash.
Refer to: [Ring Gear Backlash Adjustment](#) (205-02 Rear Drive Axle/Differential - Vehicles With: Dana M220, General Procedures).
5. Install the ELD solenoid.
Refer to: [Electronic Locking Differential \(ELD\) Solenoid](#) (205-02 Rear Drive Axle/Differential - Vehicles With: Dana M220, Removal and Installation).

Copyright © 2019 Ford Motor Company
