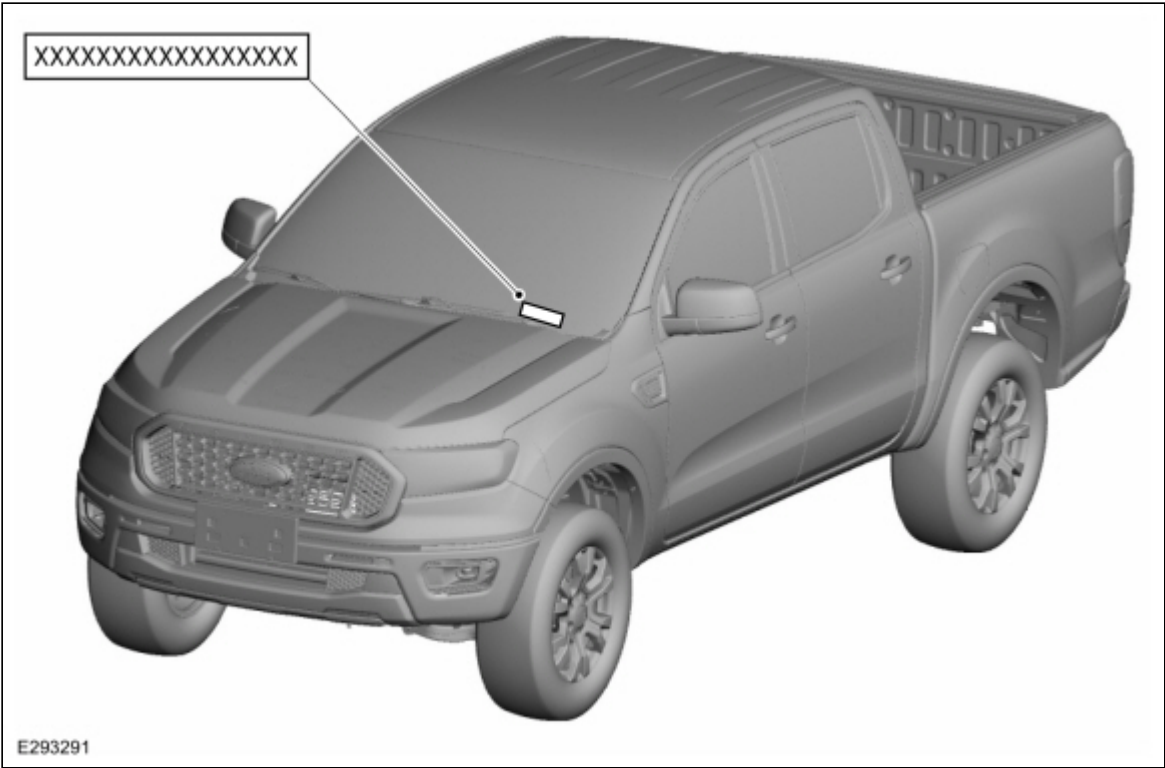


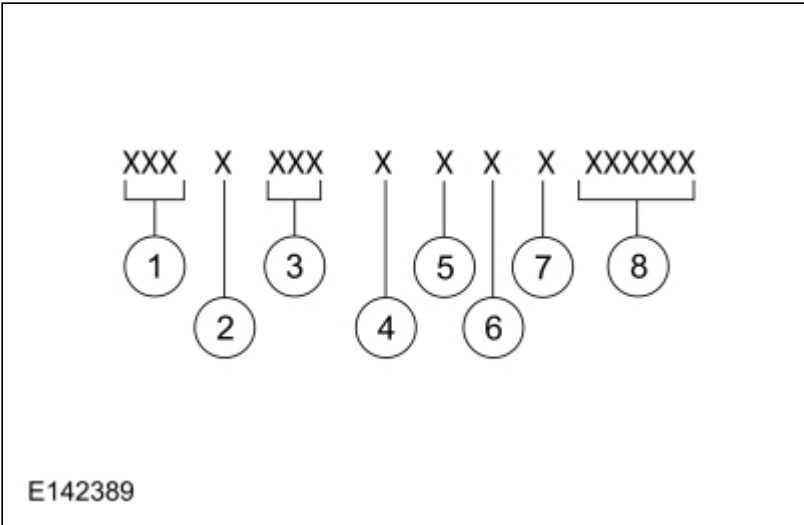
Identification Codes

VIN

VIN Locator



The VIN is a 17-digit combination of letters and numbers. The VIN is stamped on a metal tab riveted to the instrument panel, top upper left of the dash. The VIN is also found on the VC label. If the VIN plate requires replacement, authorized dealers must contact their respective regional office.



Item	Description
1	WMI (World Manufacturer Identifier)

Item	Description
2	Restraint-type and <u>GVW</u> code
3	Vehicle line, series, body-type code
4	Engine-type code
5	Computer-generated check digit
6	Model year code
7	Assembly plant code
8	Production sequence number

### World Manufacturer Identifier

The first 3 VIN positions are the WMI (World Manufacturer Identifier).

- 1FD - Ford Motor Company, USA, Ranger - Chassis Cab
- 1FT - Ford Motor Company, USA, truck (completed vehicle)

### Restraint Type

The fourth VIN position is the vehicle restraint and GVW code.

- E - 6,001-7,000 lb GVW, active safety belts (all positions), driver and front passenger air bags and side impact inflatable restraints (1st and 2nd row)

### Vehicle Line, Series and Body Type

Positions 5 through 7 indicate vehicle line, series and body type.

- R1A - Ranger, Super cab, RWD, Pick-up box delete
- R1E - Ranger, Super cab, RWD
- R1F - Ranger, Super cab, 4WD
- R4E - Ranger, SuperCrew cab, RWD
- R4F - Ranger, SuperCrew cab, 4WD

### Engine Type

The eighth VIN position identifies the engine type, displacement and number of cylinders.

- H - 2.3L,EcoBoost, 16-valve, Ti-VCT (Twin Independent Variable Cam Timing), 4-cylinder, Gasoline-fuel

### Check Digit

The ninth VIN position is a government-assigned, computer-generated check digit.

- 0-9

### Model Year

The tenth VIN position is the model year code.

- K - 2019

### Assembly Plant

The eleventh VIN position is the assembly plant code.

- L - Michigan Assembly plant (Michigan)

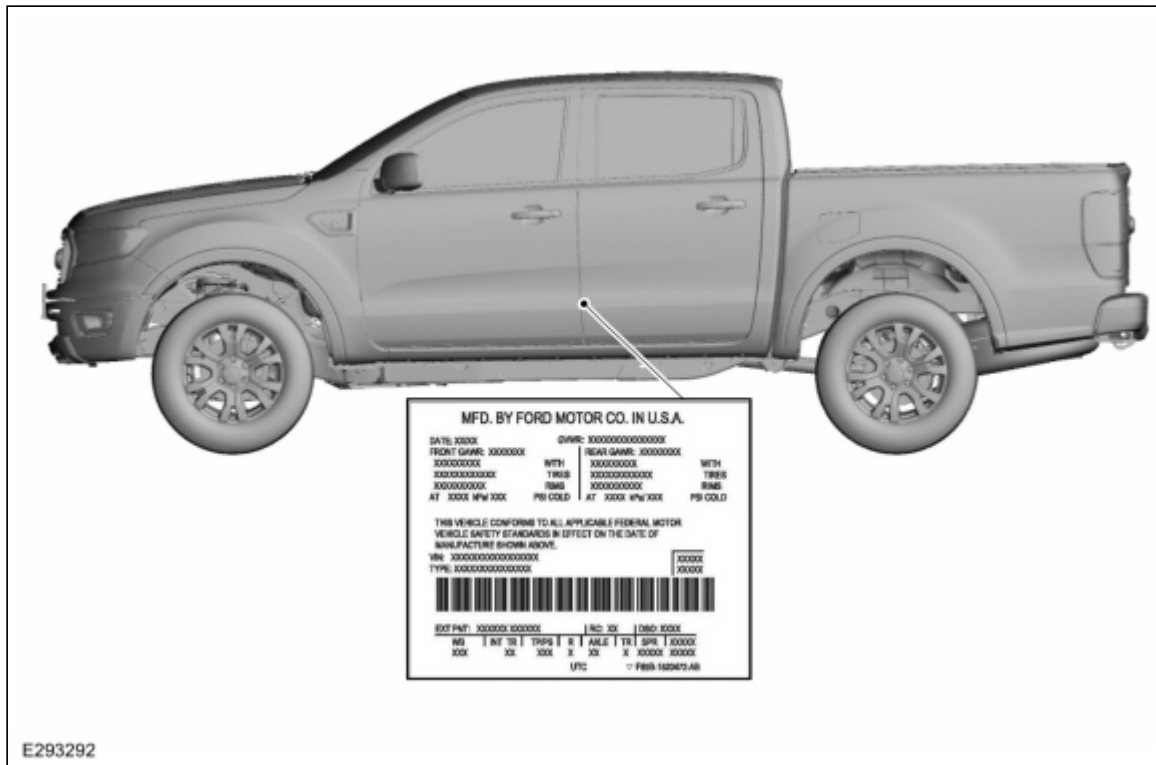
### Production Sequence Number

The last 6 VIN positions are a numeric code for the vehicle build sequence. This is also the vehicle serial and warranty number. The serial number can also be found on the engine block, transmission and frame.

- A00001 - A99999

## VC Codes

## VC Label Locator



The VC label contains the manufacturer name, the month and year of manufacture, the certification statement and the VIN. It also includes GVW and tire information. If a vehicle requires replacement of the VC label and is 4 years old or less, an authorized dealer must submit the VIN to their respective regional office. The regional office will submit a web form to the assembly plant for the replacement label. Once the label has been printed, a representative from the regional office will deliver the label to the dealer and witness installation on the vehicle. If a vehicle is more than 4 years old and requires a replacement label, the dealer must submit a request to the Department of Motor Vehicles.

**MFD. BY FORD MOTOR CO. IN U.S.A.**

DATE: XX/XX      GVWR: XXXXXXXXXX  
 FRONT GAWR: XXXXXX      REAR GAWR: XXXXXXXX  
 XXXXXXXX      WITH      XXXXXXXX      WITH  
 XXXXXXXXXX      TIRES      XXXXXXXXXX      TIRES  
 XXXXXXXXXX      RIMS      XXXXXXXXXX      RIMS  
 AT XXXX kPa/XXX      PSI COLD      AT XXXX kPa/XXX      PSI COLD

THIS VEHICLE CONFORMS TO ALL APPLICABLE FEDERAL MOTOR  
 VEHICLE SAFETY STANDARDS IN EFFECT ON THE DATE OF  
 MANUFACTURE SHOWN ABOVE.

VIN: XXXXXXXXXXXXXXXX      2      XXXXX 3  
 TYPE: XXXXXXXXXXXXXXXX      XXXXX

1

EXT PNT: XXXXXX XXXXXX      RC: XX      DSO: XXXX

WB	INT	TR	TP/PS	R	AXLE	TR	SPR	XXXXX
XXX	XX	XXX	X	XX	X	XXXXX	XXXXX	

4      5      6      7      8      9      10      11

UTC      ▽ F8 B-1520472-AL

E168871

Item	Description
1	Exterior paint code
2	Region code
3	DSO (District Special Order) code
4	Wheelbase code
5	Interior trim code
6	Tape/paint stripe code
7	Radio code
8	Axle code
9	Transmission code
10	Spring code
11	Powertrain calibration information

### Paint Codes

Paint codes are listed as a 2-part code. The first set of numbers/letters indicate the vehicle primary body color. The second set of letters/numbers (if applicable) indicate a 2-tone or accent body color. All paint codes are a base/clear coat

finish.

### Primary Body Color

- EA - Hot Pepper Red (tinted clearcoat)
- G1 - Shadow Black / Absolute Black
- GU - Saber
- J7 - Magnetic
- N6 - Lightning Blue
- UG - White Platinum (tri-coat)
- UX - Ingot Silver
- YZ - Oxford White

### Wheelbase Codes

The following identifies the vehicle wheelbase:

- 126 - 3,220 mm (126 in) wheelbase

### Interior Trim Codes

Interior trim codes are listed as a 2-part code. The first digit listed indicates the seat type and fabric style. The second digit indicates the interior trim color.

### Interior Trim Type

- D - Leather, Salerno 40/console/40 seat
- L - Premium Cloth , 40/console/40 bucket seats
- Q - Cloth, 40/blank/40 bucket seats
- S - Vinyl, 40/blank/40 bucket seats

### Interior Trim Color Codes

- B - Medium Stone
- H - Ebony

### Tape/Paint Stripe Codes

Tape and paint stripe codes do not apply.

### Radio Codes

The following lists available radio codes:

- B - AM/ FM stereo with 4 - speakers
- E - AM/ FM stereo with 6 - speakers,
- M - Siriusxm sat AM/ FM stereo,
- P - Siriusxm AM/ FM stereo
- E - AM/ FM stereo with SDARS (satellite digital audio receiver system) and HD (high-definition), B and 0 Play®

### Axle Type

The following lists the available axle ratios and associated codes:

- 71 - 3.73 ratio, Conventional differential
- 73 - 3.73 ratio, ELD

### Transmission Codes

Available transmissions are as follows:

- U - 10-speed automatic (10R80)

### Spring Codes

Spring codes are listed as a 2-part code. The first 2 characters identify the RH and LH front springs. The third and fourth characters identify the RH and LH rear springs.

## Front Springs

- Base part number - 5310

## Rear Springs

- Base part number - 5560

## Powertrain Calibration Information

**MFD. BY FORD MOTOR CO. IN U.S.A.**

DATE: XX/XX		GVWR: XXXXXXXXXXXXXXXX	
FRONT GAWR: XXXXXXXX		REAR GAWR: XXXXXXXX	
XXXXXXXXXXXXX	WITH	XXXXXXXXXXXXX	WITH
XXXXXXXXXXXXX	TIRES	XXXXXXXXXXXXX	TIRES
XXXXXXXXXXXXX	RIMS	XXXXXXXXXXXXX	RIMS
AT XXXX kPa/XXX	PSI COLD	AT XXXX kPa/XXX	PSI COLD

THIS VEHICLE CONFORMS TO ALL APPLICABLE FEDERAL MOTOR  
VEHICLE SAFETY STANDARDS IN EFFECT ON THE DATE OF  
MANUFACTURE SHOWN ABOVE.

VIN: XXXXXXXXXXXXXXXXXXXX

TYPE: XXXXXXXXXXXXXXXXXXXX

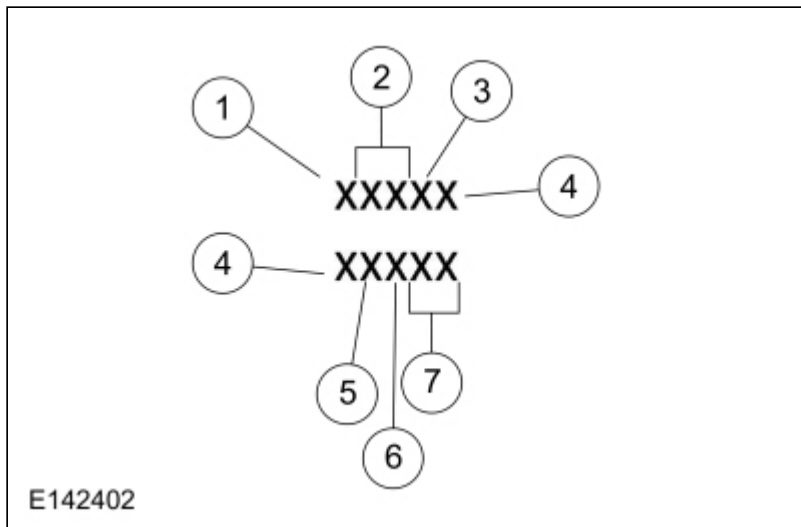


EXT PNT: XXXXXX XXXXXX		RC: XX		DSO: XXXX	
WB	INT TR	TP/PS	R	AXLE	TR SPR
XXX	XX	XXX	X	XX	X XXXX

UTC      ▼ F85B      472-AB

E168872

**NOTE:** Powertrain calibration information is limited to a maximum of 5 characters per line on the VC label. Because of this, calibration identification consisting of more than 5 characters will wrap to the second line on the VC label.



Powertrain calibration information is printed in the lower right corner of the VC label. Only the base calibration information is printed. Revision levels will not appear, however, they can be obtained through a scan tool using the most current software revision.

Item	Description
1	Model year (year in which the calibration strategy was first introduced).
2	Vehicle line
3	Transmission code
4	Unique calibrations (designates different hardware to similar vehicles), example: tires or drive ratios
5	Fleet code (describes fleet to which the vehicle belongs), example: 6 - <u>EVAP</u>
6	Certification region (lead region where multiple regions are included in one calibration), example: A - US federal
7	Revision level (will advance as revisions occur), not printed on label but may be obtained through scan tool

### Model Year

- K - 2019

### Vehicle Code

- FG - Ranger

### Transmission Code

- 2 - Automatic transmission

### Unique Calibration

The Emission/Corporate Average Fuel Economy/CO2 Compliance Department is responsible for assigning these calibration numbers. Unique identifications are assigned to cover similar vehicles to differentiate between tires, drive configurations, final drive ratios and other calibration-significant factors. These 2 characters are chosen by the analyst to provide identifiable information unique to each calibration. For example, using the number 2 to denote a 2- valve engine versus using the number 4 to denote a 4-valve engine provides an easily identifiable difference.

### Fleet Coding

- 0 - Certification (U.S. 4K, final sale in export markets)
- 1 - Heavy duty gas engine/Dyno
- 2 - Fast Automobile Manufacturers' Association, U.S.

- 3 - Alternative durability protocol, U.S.
- 4 - Not assigned
- 5 - Not assigned
- 6 - EVAP
- 7 - Mileage accumulation aging endurance durability
- 8 - OBD
- 9 - Not assigned

### Certification Region

- 5 - U.S. 50 states
- A - U.S. federal, including altitude, may include Canada and/or Mexico
- B - U.S. California standard, includes U.S. green states
- C - Canada
- D - China
- E - European Community - Austria, Belgium, Denmark, Finland, France, Germany, Greece, Ireland, Italy, Luxembourg, Netherlands, Portugal, Spain, Sweden and UK (United Kingdom)
- F - ECC (European Extended Community) - E-plus Croatia, Czech Republic, Estonia, Hungary, Norway, Poland, Romania, Russian Federation, Slovakia, Slovenia, Switzerland and Yugoslavia
- G - GCC (Gulf Cooperative Council) - Bahrain, Kuwait, Oman, Qatar, Saudi Arabia and UAE (United Arab Emirates)
- H - Hong Kong
- J - Japan
- K - Korea
- L - Malaysia
- M - Mexico
- N - New Zealand
- P - Australia
- Q - South America (Brazil)
- S - Singapore
- T - Taiwan
- U - South America (unleaded fuel regions)
- V - Vietnam
- X - Rest Of World (ROW)
- Y - Military
- Z - Israel

### Revision Level (not printed on label)

- 91-99 - Hardware and certification levels
- 01-04 - Preliminary levels
- 00 - Job 1 production (initial certification)
- 05-09 - Pre-job 1 revisions to calibrations
- 10-89 - Post-job 1 revisions to calibrations
- 0B - Durability test level
- BD - OBD intermediate level (pre-05)

Copyright © 2019 Ford Motor Company

---



