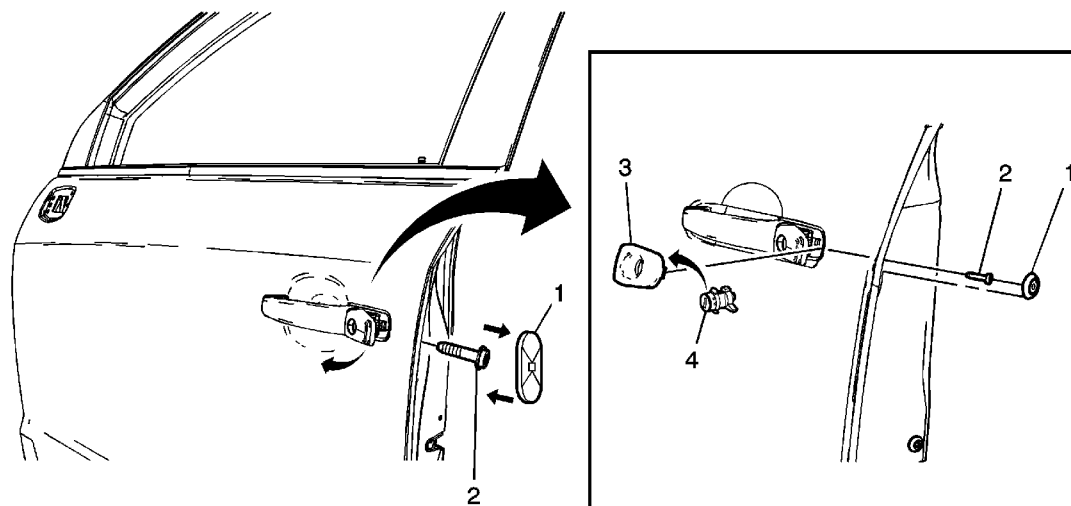


Fastener Tightening Specifications

Application	Specification	
	Metric	English
Liftgate Handle Nuts	4 N·m	35 lb in
Liftgate Latch Bolts	10 N·m	89 lb in
Liftgate Lock Striker Bolts	25 N·m	18 lb ft
Side Door Latch Bolts - Rear	10 N·m	89 lb in
Side Door Latch Screws - Front	10 N·m	89 lb in
Side Door Lock Switch	3 N·m	27 lb in
Side Door Lock Striker Bolts - Front	25 N·m	18 lb ft
Side Door Lock Striker Bolts - Rear	25 N·m	18 lb ft
Side Door Outside Handle Bolts - Front	5 N·m	44 lb in
Side Door Outside Handle Housing Bolts - Front	10 N·m	89 lb in
Side Door Outside Handle Bolts - Rear	5 N·m	44 lb in
Side Door Outside Handle Housing Bolts - Rear	10 N·m	89 lb in

Front Side Door Lock Cylinder Replacement

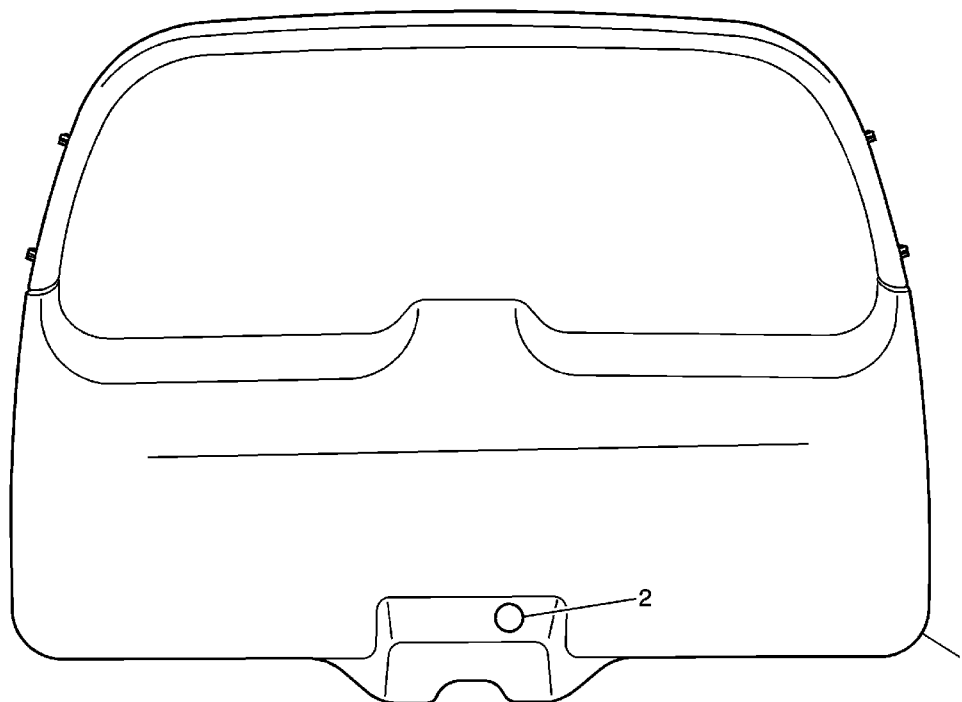


Callout	Component Name
Preliminary Procedures	
Remove the front side door trim panel. Refer to Front Side Door Trim Panel Replacement .	
1	<p>Front Side Door Outside Handle Bolt Access Plug</p> <p>Procedure</p> <p>Remove the water deflector.</p> <p>Tip Use a flat-bladed tool to remove the cover.</p>
2	<p>Front Side Door Outside Handle Bolt (Qty: 2)</p> <p>Caution: Refer to Fastener Caution in the Preface section.</p> <p>Tip It is not necessary to remove the rear side door outside handle housing from the door to replace the handle.</p>

© 2010 General Motors Corporation. All rights reserved.

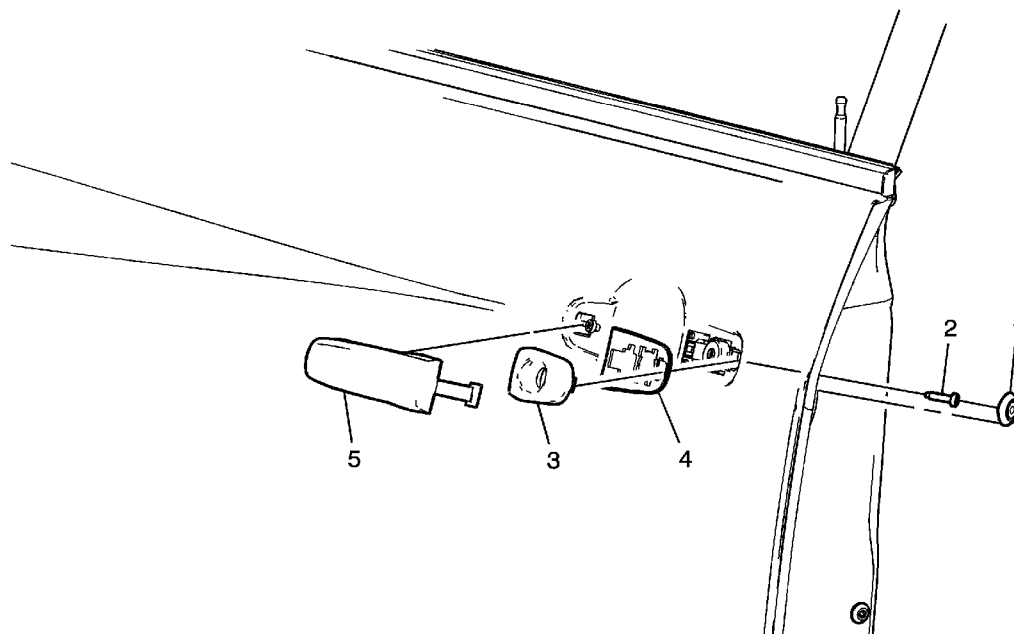
	Tighten 9 N·m (80 lb in)
3	Front Side Door Outside Handle Cap Procedure Rotate the lock cylinder cap to remove it from the handle.
4	Front Side Door Handle Lock Cylinder Procedure <ol style="list-style-type: none">1. Disconnect the lock rod from the cylinder.2. Ensure that the front side door outside handle cap gasket stay in place.3. Transfer the lock cylinder lever.4. Inspect the lock cylinder for proper operation.

Opening the Liftgate Without Electrical Power



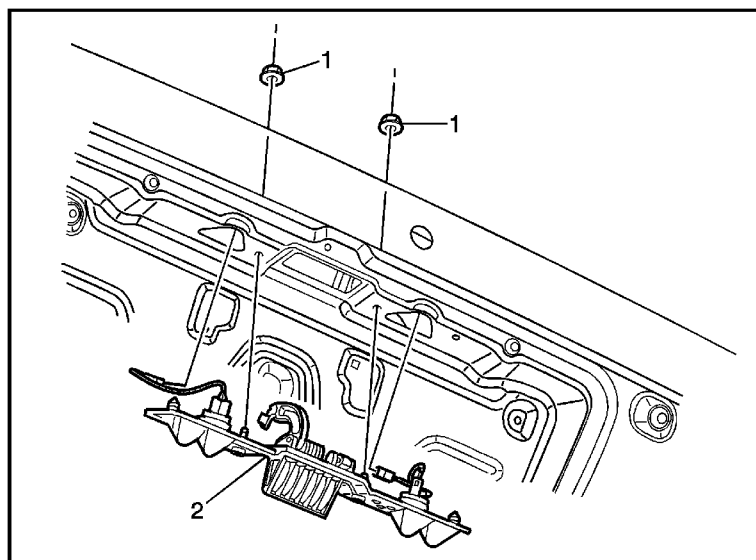
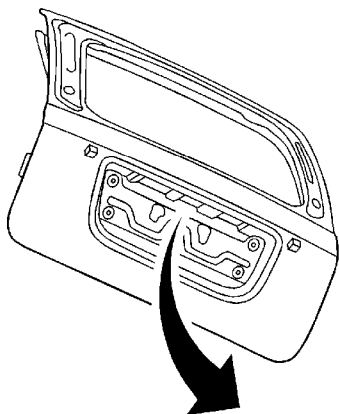
Callout	Component Name
1	Liftgate
2	Liftgate Trim Panel Plug
Procedure	
2	<ol style="list-style-type: none">1. Locate dimple on trim panel.2. Remove the access cover.3. Using a flat-bladed tool push down on the black bellcrank lever, through the access hole, to unlock the liftgate.4. Push open the liftgate from the inside.5. Install the access cover.

Front Side Door Outside Handle Replacement



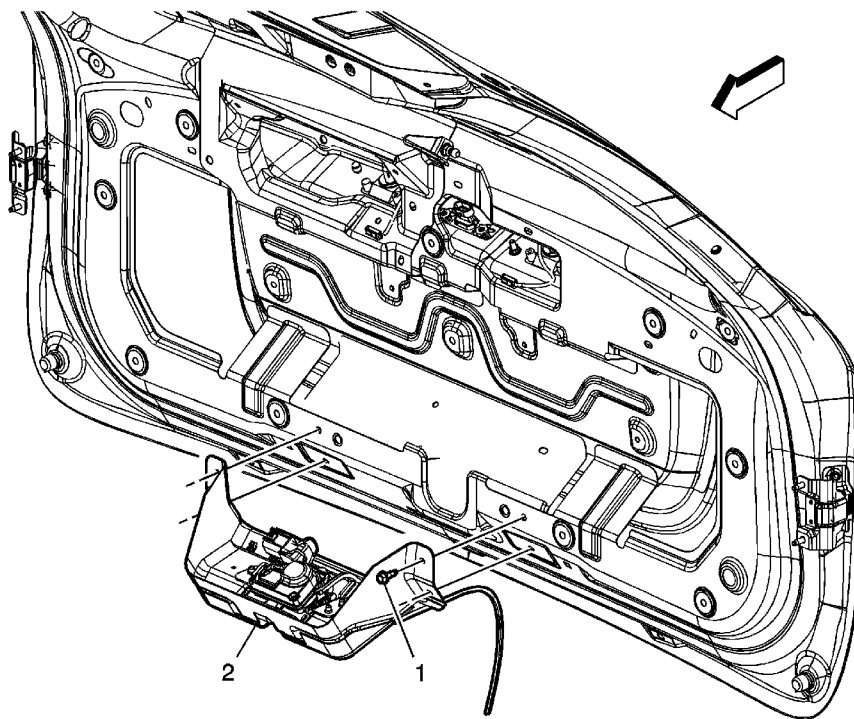
Callout	Component Name
1	Front Side Door Outside Handle Bolt Access Plug Tip Use a plastic flat-bladed tool to remove.
2	Front Side Door Outside Handle Bolt (Qty: 2) Caution: Refer to Fastener Caution in the Preface section. Tighten 5 N·m (44 lb in)
3	Front Side Door Outside Handle Cap
4	Front Side Door Outside Handle Cap Gasket
5	Front Side Door Outside Handle Tip Pull the outside handle rearward to release it from the inside handle housing.

Liftgate Outside Handle Replacement



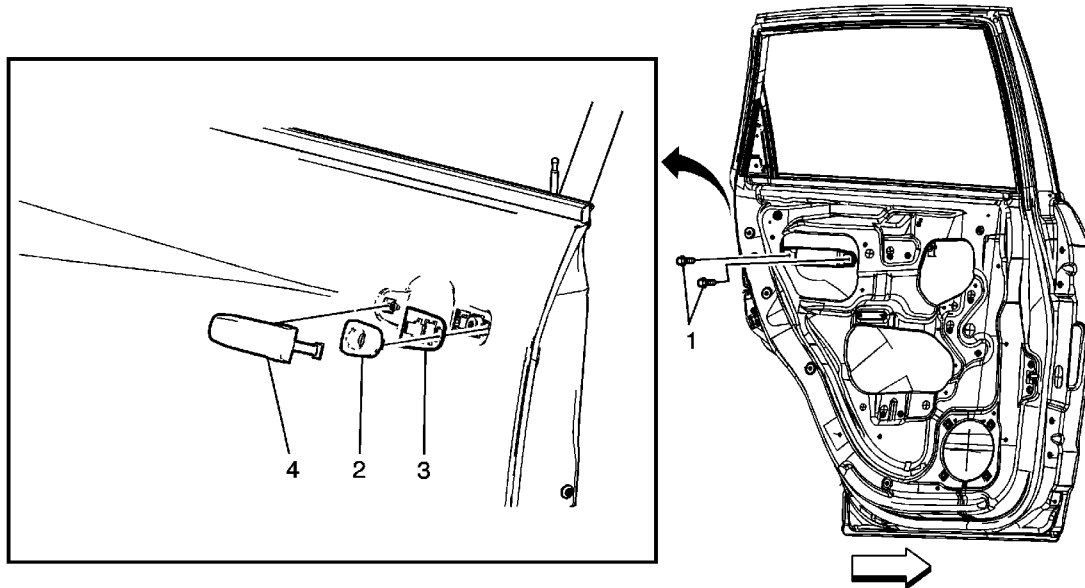
Callout	Component Name
Preliminary Procedure	
Remove the liftgate interior trim panel. Refer to Liftgate Trim Panel Replacement .	
1	Liftgate Handle Nut (Qty: 2) Caution: Refer to Fastener Caution in the Preface section. Tighten 4 N·m (35 lb in)
2	Liftgate Handle Assembly

Liftgate Latch Replacement



Callout	Component Name
Preliminary Procedure	
Remove the liftgate interior trim panel. Refer to Liftgate Trim Panel Replacement .	
1	Liftgate Latch Bolt (Qty: 4) Caution: Refer to Fastener Caution in the Preface section. Tighten 10 N·m (89 lb in)
2	Liftgate Latch Assembly Procedure Disconnect the electrical connector from the liftgate latch.

Rear Side Door Outside Handle Replacement

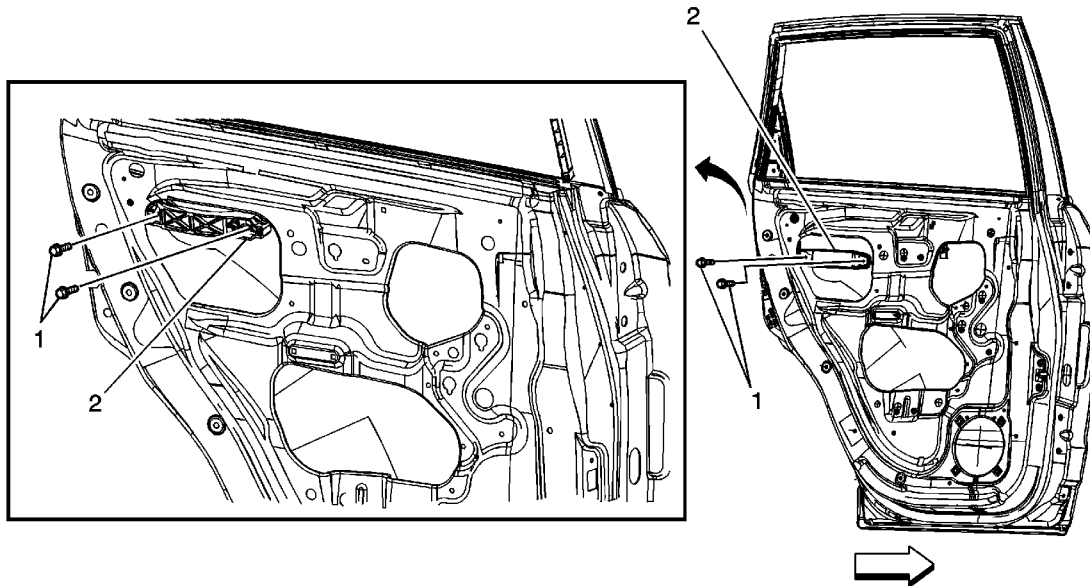


Callout	Component Name
Preliminary Procedures	
Lower the rear door latch. Do not remove the latch, pull downward to access the rear handle housing bolt. Refer to Rear Side Door Latch Replacement .	
1	Rear Side Door Outside Handle Housing Bolt (Qty: 2) Caution: Refer to Fastener Caution in the Preface section. Tip It is not necessary to remove the rear side door outside handle housing from the door to replace the handle. Tighten 5 N·m (44 lb in)
2	Rear Side Door Outside Handle Cap
3	Rear Side Door Outside Handle Cap Gasket
4	Rear Side Door Outside Handle Tip

© 2010 General Motors Corporation. All rights reserved.

Pull the outside handle rearward to release it from the inside handle housing.

Rear Side Door Outside Handle Housing Replacement



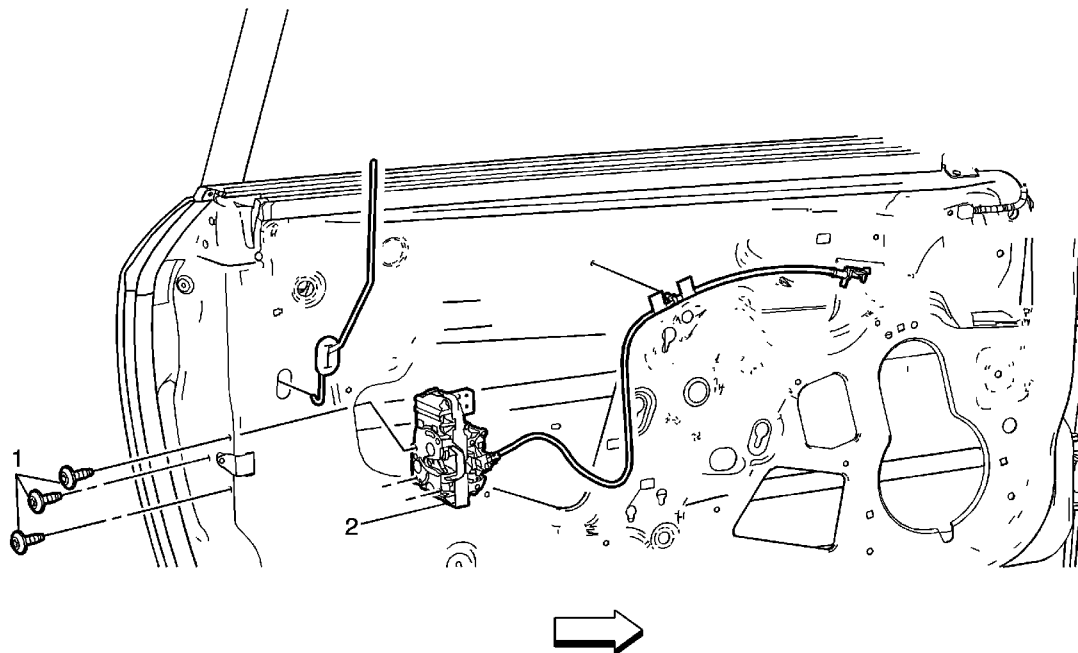
Callout	Component Name
<h3>Preliminary Procedures</h3> <ol style="list-style-type: none">1. Remove the rear side door trim panel. Refer to Rear Side Door Trim Panel Replacement.2. Remove the rear side door outside handle. Refer to Rear Side Door Outside Handle Replacement.3. Remove the rear side door latch. Refer to Rear Side Door Latch Replacement.	
1	<p>Rear Side Door Outside Handle Housing Bolt (Qty: 2)</p> <p>Caution: Refer to Fastener Caution in the Preface section.</p> <p>Tighten 10 N·m (89 lb in)</p>
2	<p>Rear Side Door Outside Handle Housing</p> <p>Procedure</p> <ol style="list-style-type: none">1. Disconnect the rear side door latch and handle rods to remove the housing.2. Release the rear inside door handle cable retainers before removing the rear

© 2010 General Motors Corporation. All rights reserved.

side door latch.

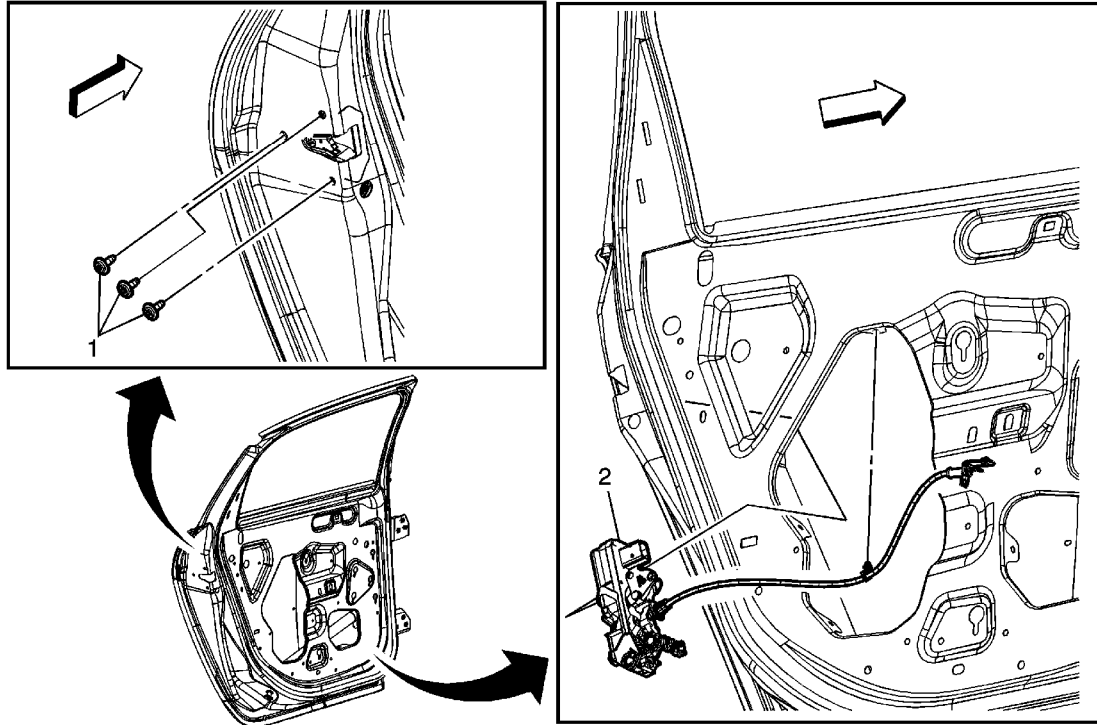
3. Disconnect the rear side door latch electrical connector.

Front Side Door Latch Replacement



Callout	Component Name
Preliminary Procedures	
Remove the front side door trim panel. Refer to Front Side Door Trim Panel Replacement .	
1	<p>Front Side Door Latch Screws (Qty: 3)</p> <p>Caution: Refer to Fastener Caution in the Preface section.</p> <p>Tighten 10 N·m (89 lb in)</p>
2	<p>Front Side Door Latch Assembly</p> <p>Procedure</p> <ol style="list-style-type: none">1. Remove the water deflector.2. Release the front inside door handle cable retainers from the door.3. Disconnect the front side door latch electrical connector.4. Transfer the front side door latch rods.

Rear Side Door Latch Replacement

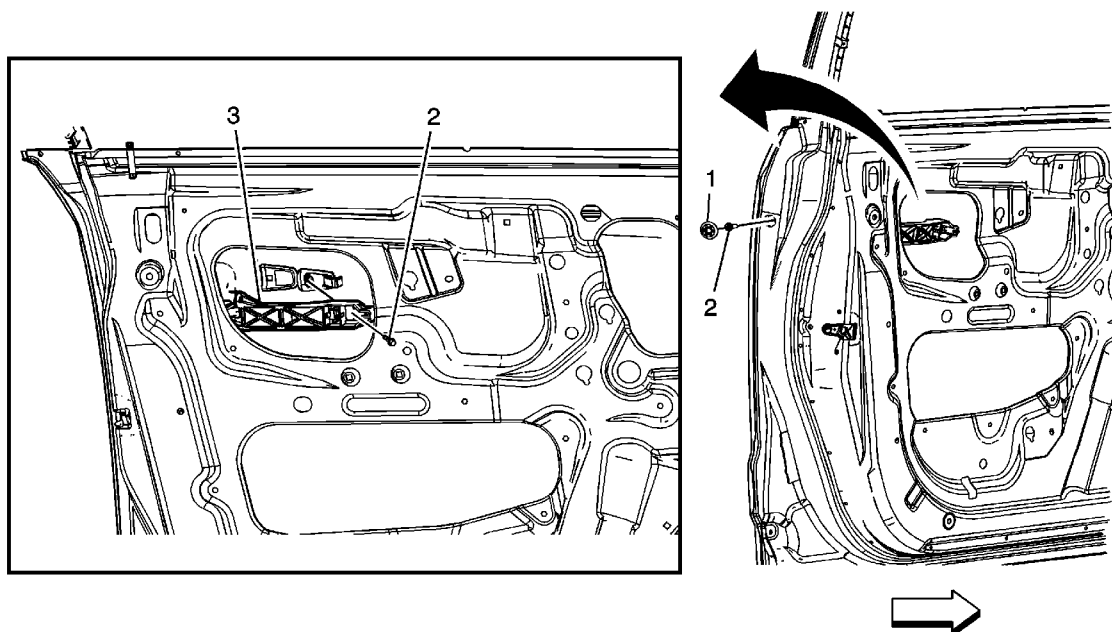


Callout	Component Name
Preliminary Procedures	
Remove the interior trim panel. Refer to Rear Side Door Trim Panel Replacement .	
1	<p>Rear Side Door Latch Bolt (Qty: 3)</p> <p>Caution: Refer to Fastener Caution in the Preface section.</p> <p>Procedure</p> <p>Remove the water deflector.</p> <p>Tighten 10 N·m (89 lb in)</p>
2	<p>Rear Side Door Latch Assembly</p> <p>Procedures</p> <p>1. Release the inside door handle cable retainers before removing the rear side</p>

door latch.

2. Disconnect the rear side door latch electrical connector.
3. Transfer the rear side door latch rods.

Front Side Door Outside Handle Housing Replacement



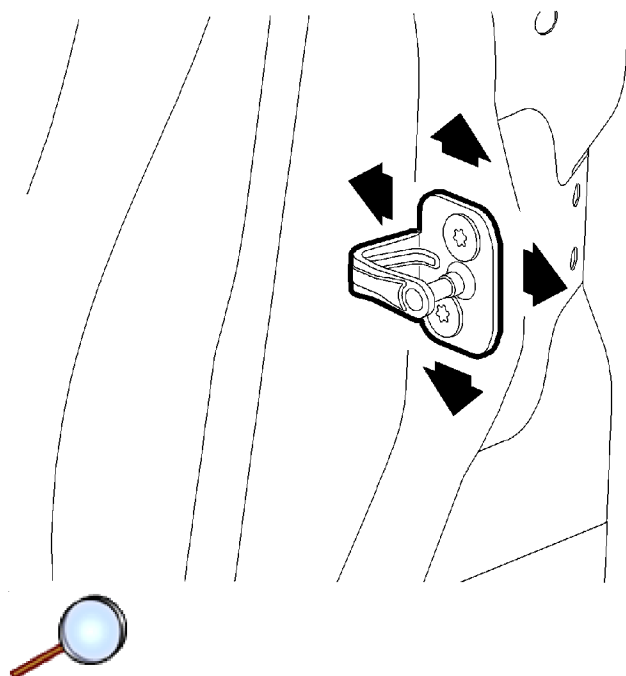
Callout	Component Name
<h3>Preliminary Procedures</h3> <ol style="list-style-type: none"> 1. Remove the front side door trim panel. Refer to Front Side Door Trim Panel Replacement. 2. Remove the front side door outside handle. Refer to Front Side Door Outside Handle Replacement. 	
1	Front Side Door Outside Handle Bolt Access Plug Procedure Remove the water deflector. Tip Use a plastic flat-bladed tool to remove.
2	Front Side Door Outside Handle Housing Bolt (Qty: 2) Caution: Refer to Fastener Caution in the Preface section. Tighten

	10 N·m (89 lb in)
3	<p>Front Side Door Outside Handle Housing</p> <p>Procedures</p> <ol style="list-style-type: none">1. Disconnect the front side door latch and handle rods to remove the housing.2. Release the front inside door handle cable retainers before removing the front side door latch.3. Disconnect the front side door latch electrical connector.

Front Side Door Lock Striker Adjustment

To determine if striker adjustment is required, proceed as follows:

Warning: In order to prevent SIR deployment, personal injury, or unnecessary SIR system repairs, do not strike the door or the door pillar in the area of the side impact sensor (SIS). Turn OFF the ignition and remove the key when performing service in the area of the SIS.

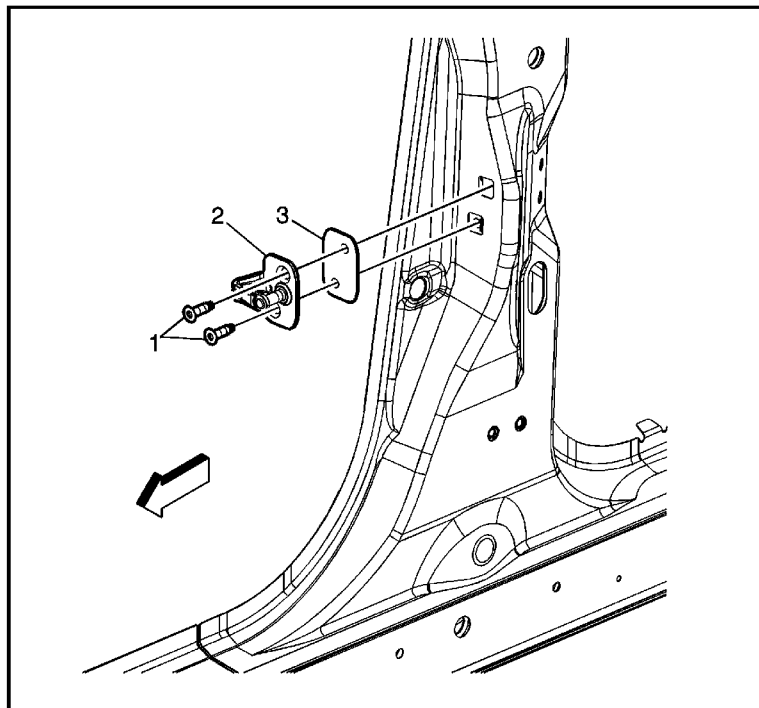
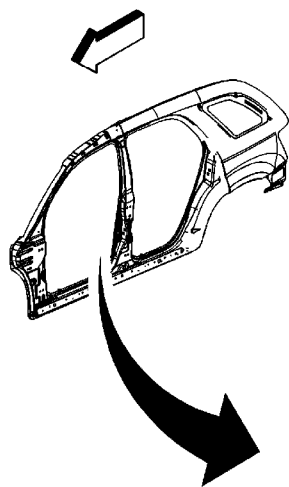


1. Ensure the door is properly aligned within the door opening before proceeding with the striker adjustment.
2. Close the door onto the striker and note if the door drags on the striker causing the door to move upward or downward upon contact with the striker. Also note the closing effort to fully engage the latch.
3. Using a grease pencil, mark around the striker for reference of the original position. Loosen the striker.
4. Move the striker to eliminate drag on the striker and door latch and to achieve the proper door position within the door opening. Start with the up/down position, then position the striker to achieve proper alignment to the door opening. Set the in/out adjustment for the proper door seal engagement making sure the door closing efforts are correct.

Caution: Refer to [Fastener Caution](#) in the Preface section.

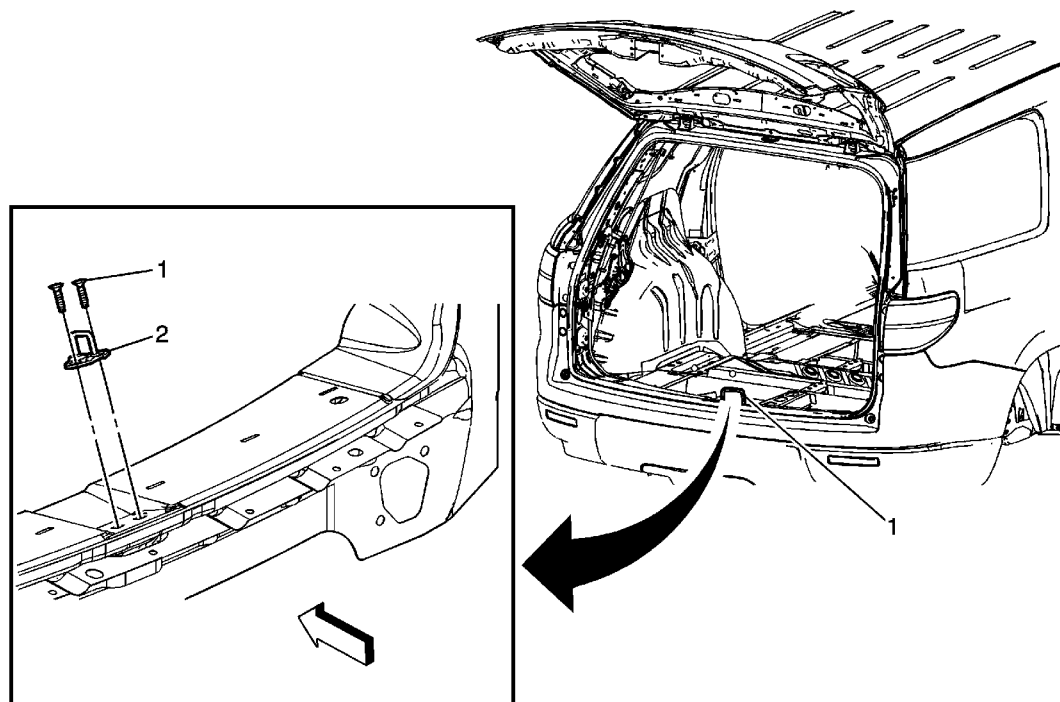
5. Tighten the striker bolts. Tighten the door striker bolts to **25 N·m (18 lb ft)**.

Front Side Door Lock Striker Replacement



Callout	Component Name
Warning: In order to prevent SIR deployment, personal injury, or unnecessary SIR system repairs, do not strike the door or the door pillar in the area of the side impact sensor (SIS). Turn OFF the ignition and remove the key when performing service in the area of the SIS.	
1	Front Side Door Lock Striker Bolt (Qty: 2) Caution: Refer to Fastener Caution in the Preface section. Tighten 25 N·m (18 lb ft)
2	Front Side Door Lock Striker Assembly Tip Ensure proper alignment after installation. Refer to Front Side Door Lock Striker Adjustment .
3	Front Side Door Lock Striker Spacer

Liftgate Lock Striker Replacement

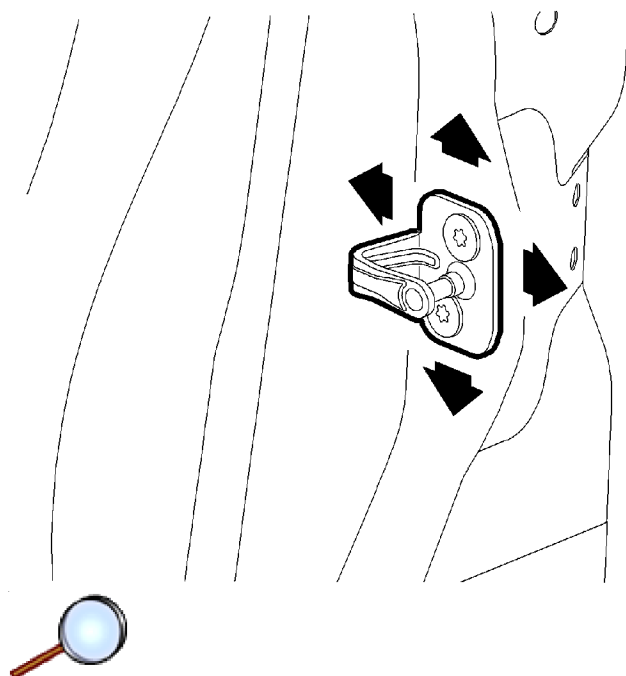


Callout	Component Name
Preliminary Procedures	
Remove Liftgate Door Sill Plate. Refer to Liftgate Door Sill Plate Replacement	
1	Liftgate Lock Striker Bolt (Qty: 2) Caution: Refer to Fastener Caution in the Preface section. Tighten 25 N·m (18 lb ft)
2	Liftgate Lock Striker Procedure Mark the location of the striker with a grease pencil to ensure proper alignment during installation.

Rear Side Door Lock Striker Adjustment

To determine if striker adjustment is required, proceed as follows:

Warning: In order to prevent SIR deployment, personal injury, or unnecessary SIR system repairs, do not strike the door or the door pillar in the area of the side impact sensor (SIS). Turn OFF the ignition and remove the key when performing service in the area of the SIS.

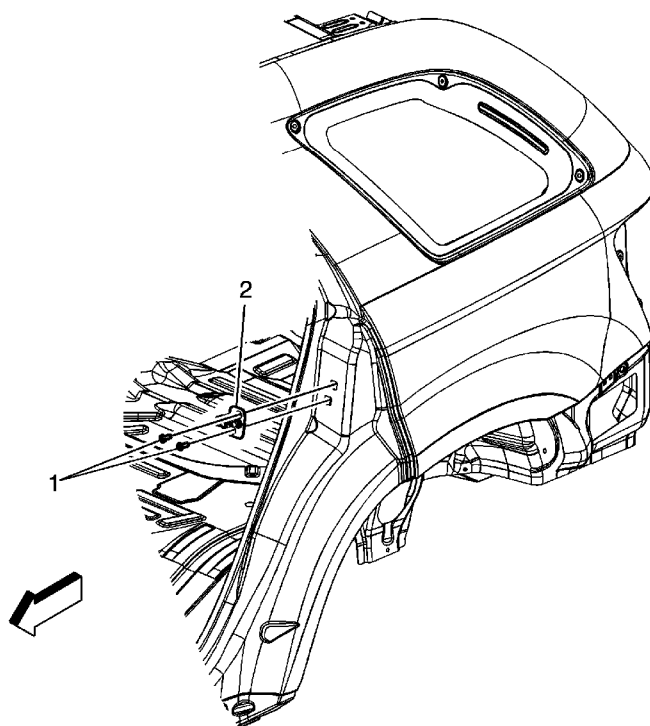


1. Ensure the door is properly aligned within the door opening before proceeding with the striker adjustment.
2. Close the door onto the striker and note if the door drags on the striker causing the door to move upward or downward upon contact with the striker. Also note the closing effort to fully engage the latch.
3. Using a grease pencil, mark around the striker for reference of the original position. Loosen the striker.
4. Move the striker to eliminate drag on the striker and door latch and to achieve the proper door position within the door opening. Start with the up/down position, then position the striker to achieve proper alignment to the door opening. Set the in/out adjustment for the proper door seal engagement making sure the door closing efforts are correct.

Caution: Refer to [Fastener Caution](#) in the Preface section.

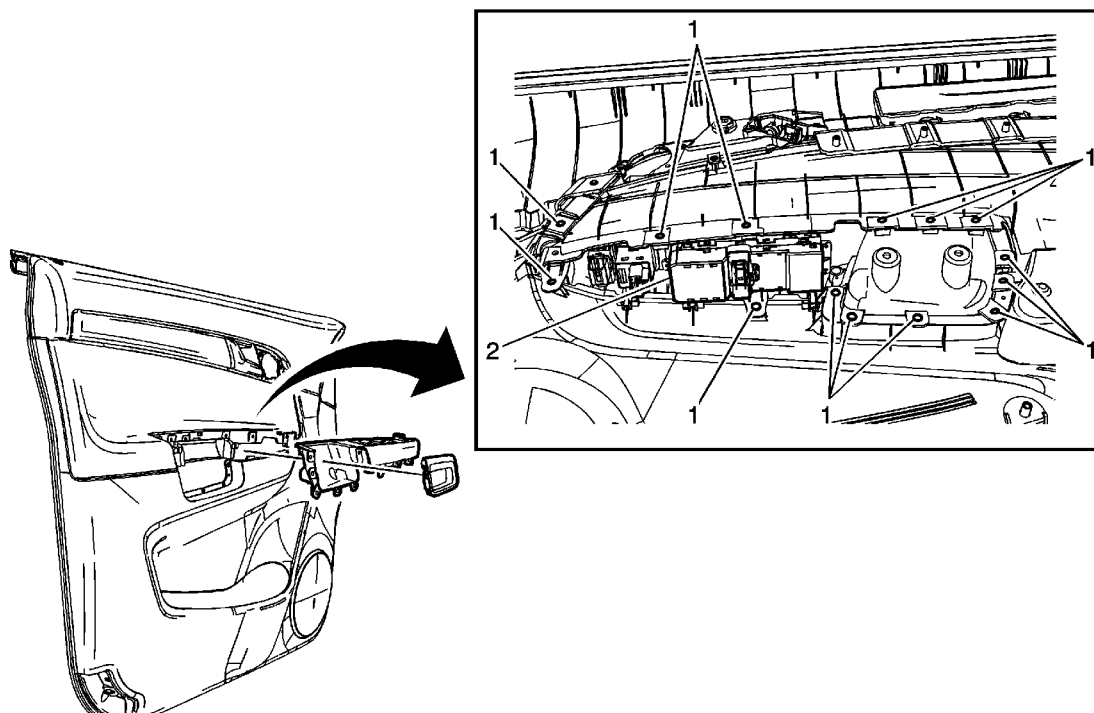
5. Tighten the striker bolts. Tighten the door striker bolts to **25 N·m (18 lb ft)**.

Rear Side Door Lock Striker Replacement



Callout	Component Name
1	<p>Rear Side Door Latch Striker Bolt (Qty: 2)</p> <p>Caution: Refer to Fastener Caution in the Preface section.</p> <p>Tighten 25 N·m (18 lb ft)</p>
2	<p>Rear Side Door Latch Striker</p> <p>Procedure</p> <ol style="list-style-type: none">1. Ensure the spacer is in place.2. Ensure proper alignment after installation. Refer to Rear Side Door Lock Striker Adjustment.

Door Lock Switch Replacement



Callout	Component Name
Preliminary Procedure	
Remove Front side door trim panel. Refer to Front Side Door Trim Panel Replacement .	
1	Front Side Door Lock and Side Window Switch Screw (Qty: 14) Caution: Refer to Fastener Caution in the Preface section. Tighten 3 N·m (27 lb in)
2	Front Side Door Lock and Side Window Switch Assembly Procedure Disconnect the electrical connectors