

[2009 Saturn VUE - AWD](#) | [VUE, VUE Hybrid \(VIN Z\), Captiva Sport Service Manual](#) | [Transmission](#) |
[Transfer Case - Getrag 760](#) | [Specifications](#) | **Document ID: 1709859**

Approximate Fluid Capacities

Application	Specification	
	Metric	English
Synthetic Lubricant - Transfer Case	0.8 liter	0.85 quart

[2009 Saturn VUE - AWD](#) | [VUE, VUE Hybrid \(VIN Z\), Captiva Sport Service Manual](#) | [Transmission](#) |
[Transfer Case - Getrag 760](#) | [Specifications](#) | **Document ID: 1956406**

Fastener Tightening Specifications

Application	Specification	
	Metric	English
Transfer Case Bracket-to-Engine Bolt - Hole 4	50 N·m	37 lb ft
Transfer Case Bracket-to-Engine Bolts - Holes 1, 2, and 3	23 N·m	17 lb ft
Transfer Case Bracket-to-Transfer Case Bolts - Holes 5 and 6	50 N·m	37 lb ft
Transfer Case Drain Plug	39 N·m	29 lb ft
Transfer Case Fill Plug	39 N·m	29 lb ft
Transfer Case Half Bolts (Qty: 12)	29 N·m	21 lb ft
Transfer Case Heat Shield Bolts (Qty: 3)	11 N·m	97 lb in
Transfer Case Rear Output Drive Gear Nut (Qty: 1)	235 N·m	173 lb ft
Transfer Case Rear Output Drive Shaft Housing Bolts (Qty: 6)	29 N·m	21 lb ft

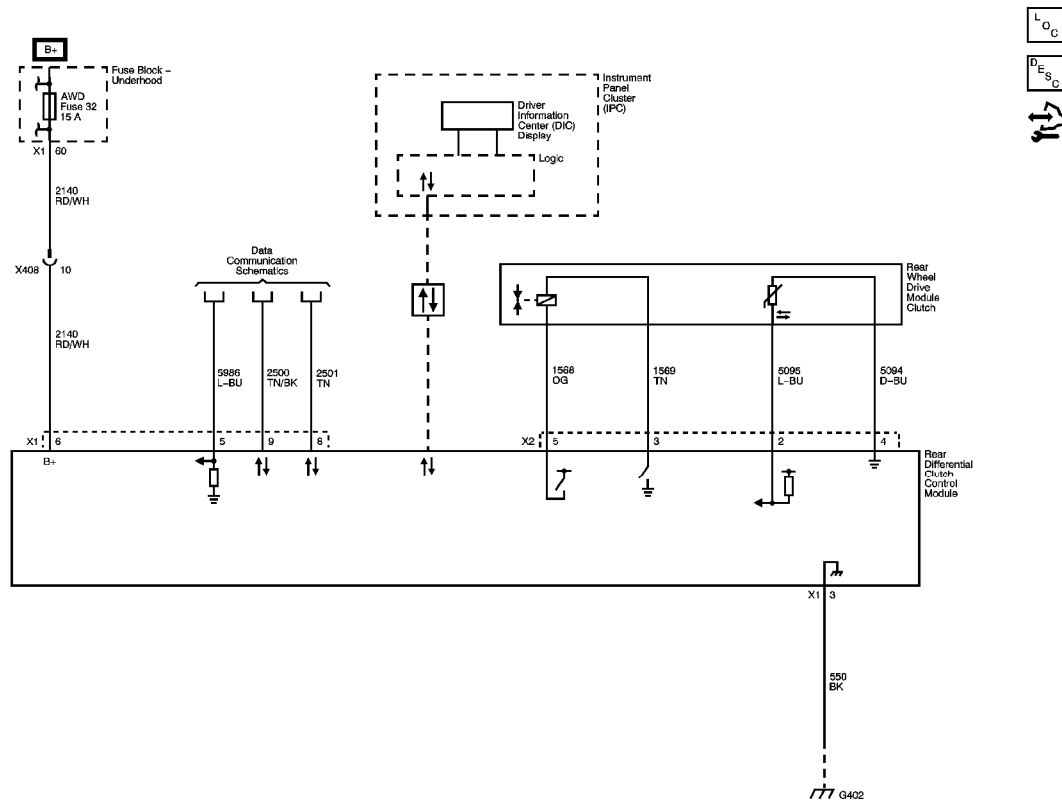
[2009 Saturn VUE - AWD](#) | [VUE, VUE Hybrid \(VIN Z\), Captiva Sport Service Manual](#) | [Transmission](#) |
[Transfer Case - Getrag 760](#) | [Specifications](#) | **Document ID: 1709868**

Adhesives, Fluids, Lubricants, and Sealers

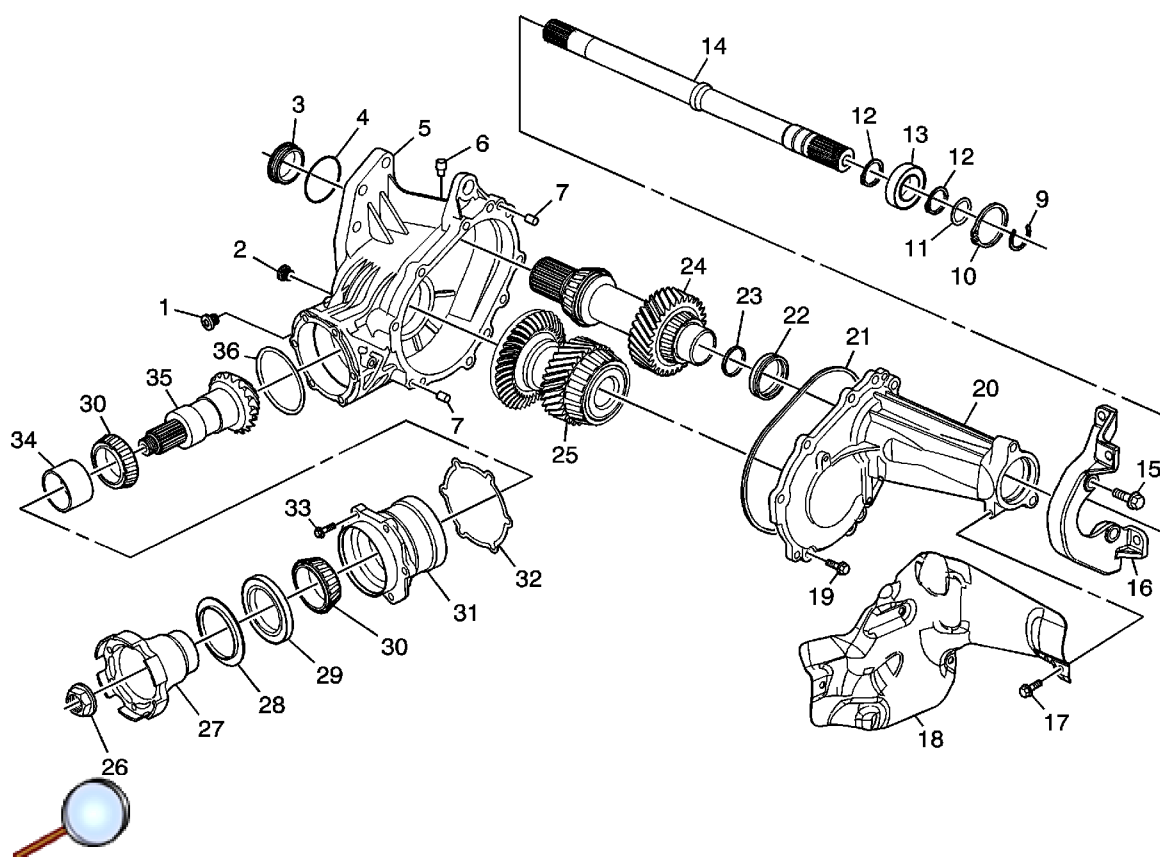
Application	Type of Material	GM Part Number	
		United States	Canada
Transfer Case Fill	Synthetic Lubricant	89021677	89021678

2009 Saturn VUE - AWD | [VUE, VUE Hybrid \(VIN Z\), Captiva Sport Service Manual](#) | [Transmission](#) |
[Transfer Case - Getrag 760](#) | [Schematic and Routing Diagrams](#) | Document ID: 2081206

All-Wheel Drive Schematics



Transfer Case Disassembled View



- (1) Transfer Case Drain Plug
- (2) Transfer Case Fill Plug
- (3) Transfer Case Input Shaft Seal - Left
- (4) Transfer Case O-Ring Seal
- (5) Transfer Case - Left
- (6) Transfer Case Vent Assembly
- (7) Transfer Case Half Locating Pin (Qty: 2)
- (7) Transfer Case Half Locating Pin (Qty: 2)
- (9) Half Shaft Retainer
- (10) Front Wheel Drive Retainer
- (11) O-Ring
- (12) Front Wheel Drive Intermediate Shaft Bearing Retainer (Qty: 2)
- (12) Front Wheel Drive Intermediate Shaft Bearing Retainer (Qty: 2)
- (13) Front Wheel Drive Intermediate Shaft Bearing Assembly
- (14) Front Wheel Drive Intermediate Shaft
- (15) Transfer Case Mounting Bracket Bolt (Qty: 6)
- (16) Transfer Case Mounting Bracket
- (17) Transfer Case Heat Shield Bolt (Qty: 3)

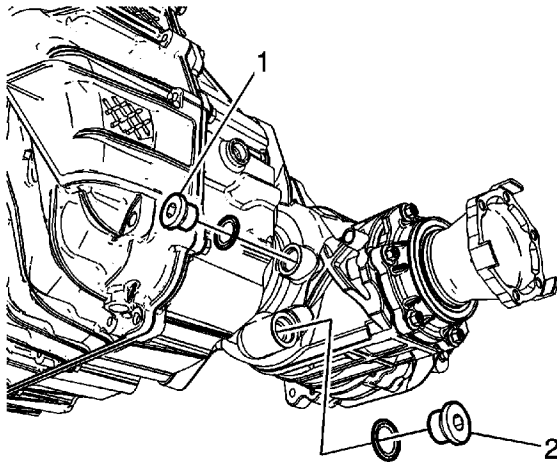
© 2010 General Motors Corporation. All rights reserved.

- (18) Transfer Case Heat Shield
- (19) Transfer Case Half Bolt (Qty: 12)
- (20) Transfer Case - Right
- (21) Transfer Case Seal
- (22) Transfer Case Input Shaft Seal - Right
- (23) Front Drive Axle Intermediate Shaft Seal Assembly
- (24) Transfer Case Input Shaft
- (25) Transfer Case Rear Output Drive Shaft
- (26) Transfer Case Rear Output Shaft Nut
- (27) Transfer Case Rear Output Shaft Flange
- (28) Transfer Case Rear Output Shaft Oil Slinger
- (29) Transfer Case Rear Output Shaft Seal
- (30) Transfer Case Rear Output Shaft Bearing Assembly (Qty: 2)
- (30) Transfer Case Rear Output Shaft Bearing Assembly (Qty: 2)
- (31) Transfer Case Rear Output Shaft Housing
- (32) Transfer Case Rear Output Shim
- (33) Transfer Case Rear Output Shaft Housing Bolt (Qty: 6)
- (34) Transfer Case Rear Output Shaft Bearing Spacer
- (35) Transfer Case Rear Output Shaft
- (36) Transfer Case Rear Output Shaft Housing Seal O-Ring

Transfer Case Fluid Replacement

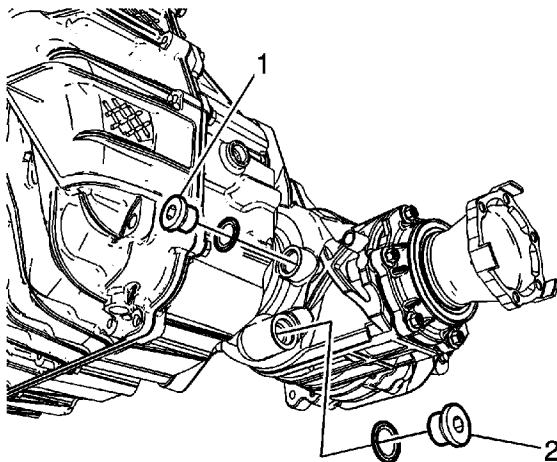
Removal Procedure

1. Raise and support the vehicle. Refer to [Lifting and Jacking the Vehicle](#).



2. Remove the drain plug (2).
3. Remove the fill plug (1).

Installation Procedure



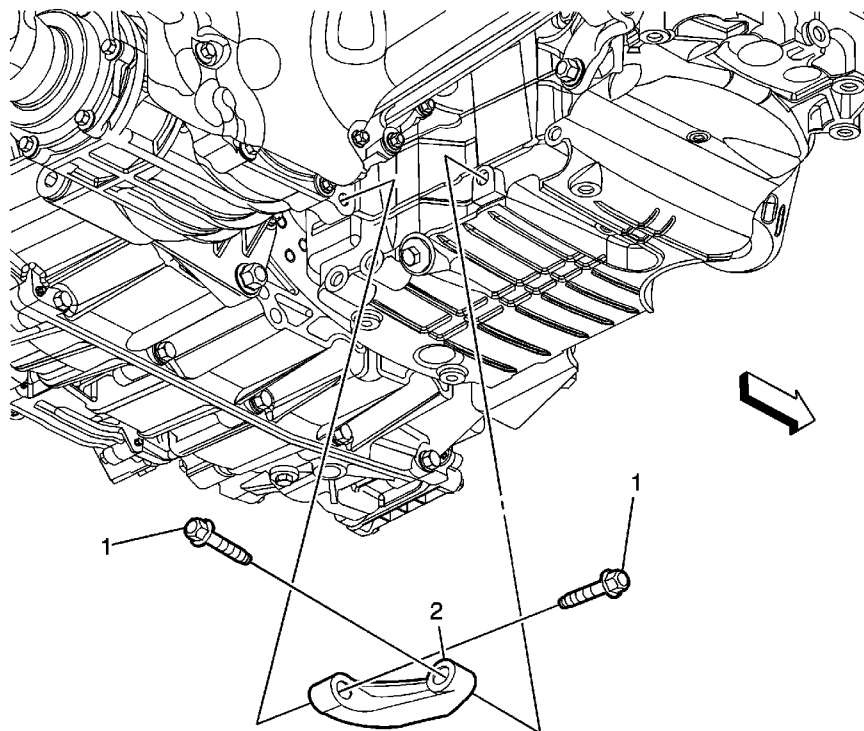


1. Clean the drain plug.

Caution: Refer to [Component Fastener Tightening Caution](#) in the Preface section.

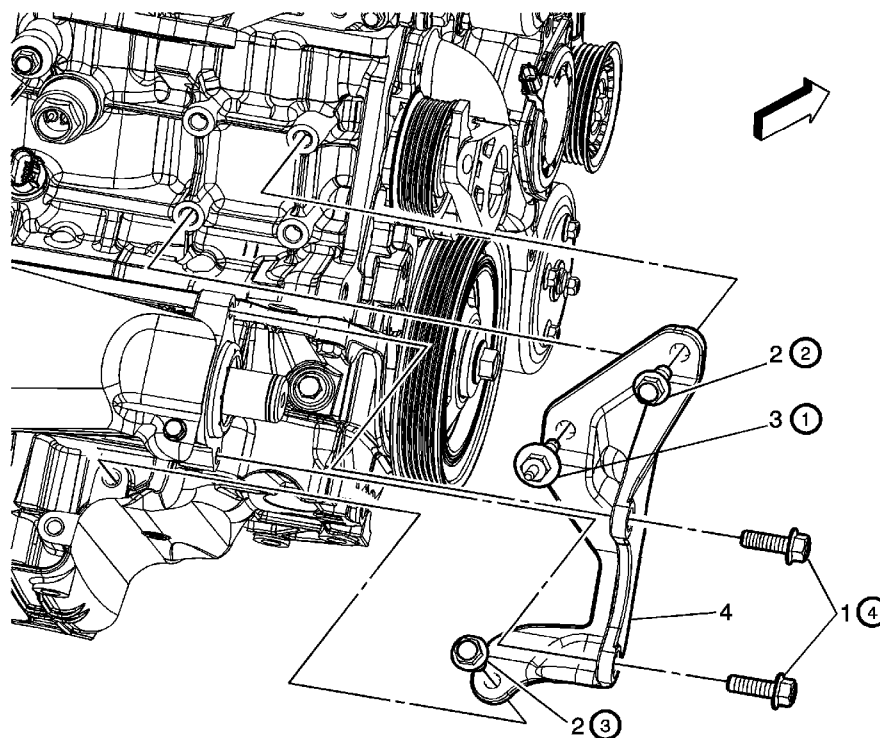
2. Install the drain plug (2) and tighten to **39 N·m (29 lb ft)**.
3. Fill the transfer case with synthetic gear lubricant GM P/N 89021677 (Canadian P/N 89021678) to the bottom of the fill plug, or 0.80 L (0.85 qt).
4. Install the fill plug (1) and tighten to **39 N·m (29 lb ft)**.
5. Lower the vehicle.

Transfer Case Brace Replacement (LZ4 Transfer Case to Engine Oil Pan)



Callout	Component Name
Preliminary Procedure	
Raise the vehicle. Refer to Lifting and Jacking the Vehicle .	
1	Transfer Case Brace Bolt (Qty: 2) Caution: Refer to Fastener Caution in the Preface section. Tighten 50 N·m (37 lb ft)
2	Transfer Case Brace

Transfer Case Brace Replacement (LZ4 Transfer Case to Engine Block)

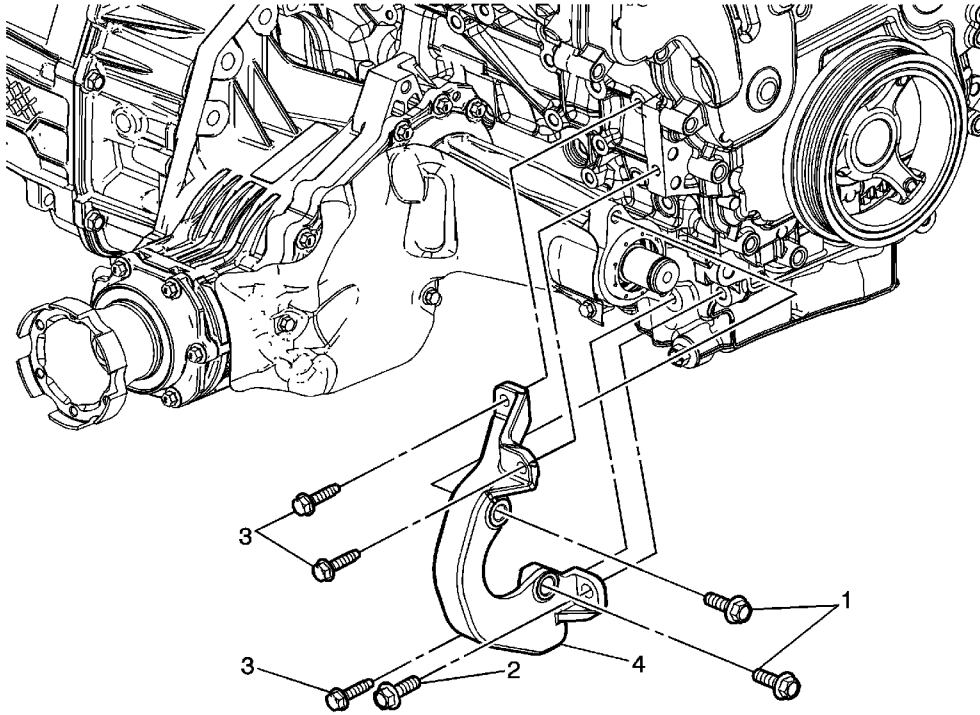


Callout	Component Name
Preliminary Procedure	
<ol style="list-style-type: none">1. Raise the vehicle. Refer to Lifting and Jacking the Vehicle.2. Remove the right wheel drive shaft. Refer to Front Wheel Drive Shaft Replacement.	
1	<p>Transfer Case Brace Bolt (Qty: 2)</p> <p>Caution: Refer to Fastener Caution in the Preface section.</p> <p>Tip Tighten the fasteners in the specified sequential order.</p> <p>Tighten 23 N·m (17 lb ft)</p>
2	<p>Transfer Case Brace Bolt (Qty: 2)</p> <p>Tip Tighten the fasteners in the specified sequential order.</p>

© 2010 General Motors Corporation. All rights reserved.

	Tighten 50 N·m (37 lb ft)
3	Transfer Case Brace Stud Tip Tighten the fasteners in the specified sequential order. Tighten 50 N·m (37 lb ft)
4	Transfer Case Brace

Transfer Case Brace Replacement (LY7)



Callout	Component Name
Preliminary Procedure	
<ol style="list-style-type: none">1. Raise the vehicle. Refer to Lifting and Jacking the Vehicle.2. Remove the right wheel drive shaft. Refer to Front Wheel Drive Shaft Replacement.	
1	<p>Transfer Case Brace Bolt (Qty: 2)</p> <p>Caution: Refer to Fastener Caution in the Preface section.</p> <p>Tip Tighten the fasteners in the specified sequential order.</p> <p>Tighten 50 N·m (37 lb ft)</p>
2	<p>Transfer Case Brace Bolt</p> <p>Tip Tighten the fasteners in the specified sequential order.</p> <p>Tighten</p>

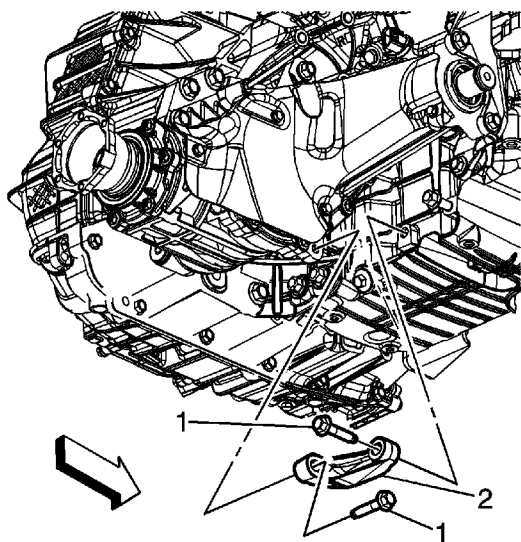
© 2010 General Motors Corporation. All rights reserved.

	50 N·m (37 lb ft)
3	<p>Transfer Case Brace Bolt (Qty: 3)</p> <p>Tip Tighten the fasteners in the specified sequential order.</p> <p>Tighten 23 N·m (17 lb ft)</p>
4	Transfer Case Brace

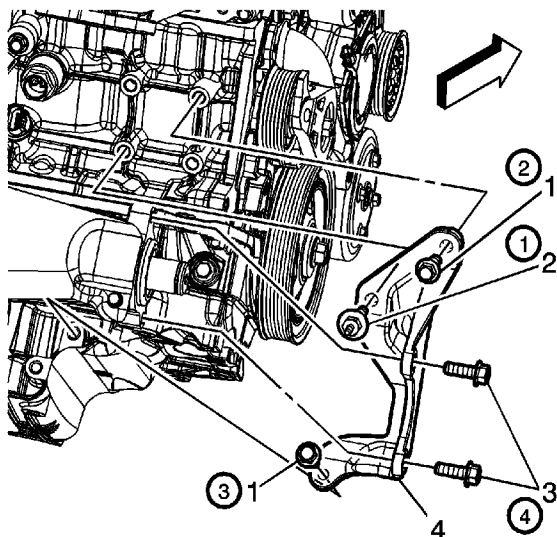
Transfer Case Assembly Replacement (LZ4)

Removal Procedure

1. Raise and support the vehicle. Refer to [Lifting and Jacking the Vehicle](#).
2. Drain the transfer case fluid. Refer to [Transfer Case Fluid Replacement](#).
3. Remove the propeller shaft. Refer to [Propeller Shaft Replacement](#).
4. Remove the right wheel drive shaft. Refer to [Front Wheel Drive Shaft Replacement](#).
5. Remove both catalytic converters. Refer to [Catalytic Converter Replacement - Right Side](#) and [Catalytic Converter Replacement - Left Side](#).

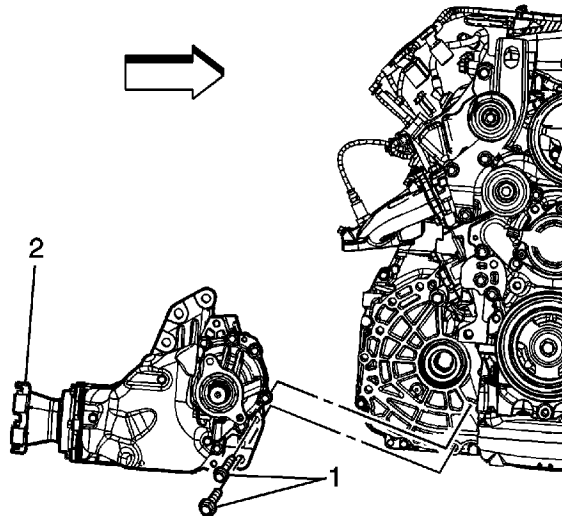


6. Remove the transfer case mounting bracket bolts (1).
7. Remove the transfer case mounting bracket (2).

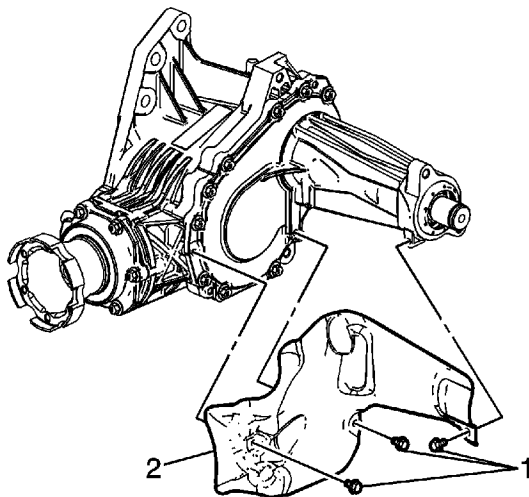




8. Remove the transfer case mounting bracket bolts (1, 3) and stud (2).
9. Remove the transfer case mounting bracket (4).
10. Support the transaxle with a jackstand.
11. Remove the rear transmission mount and bracket. Refer to [Transmission Mount Bracket Replacement - Rear](#).



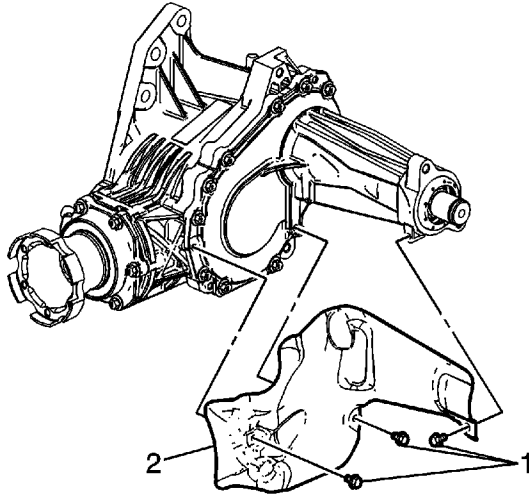
12. Remove the bolts (1) securing the transfer case to the transaxle.
13. Remove the transfer case (2) from the transaxle.



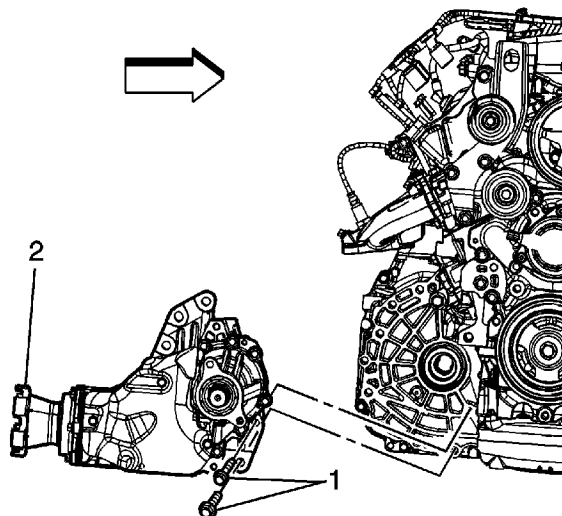
14. If replacing the transfer case, complete the following steps.
 - Remove the transfer case heat shield bolts (1).
 - Remove the transfer case heat shield (2).

Installation Procedure

Caution: Refer to [Fastener Caution](#) in the Preface section.



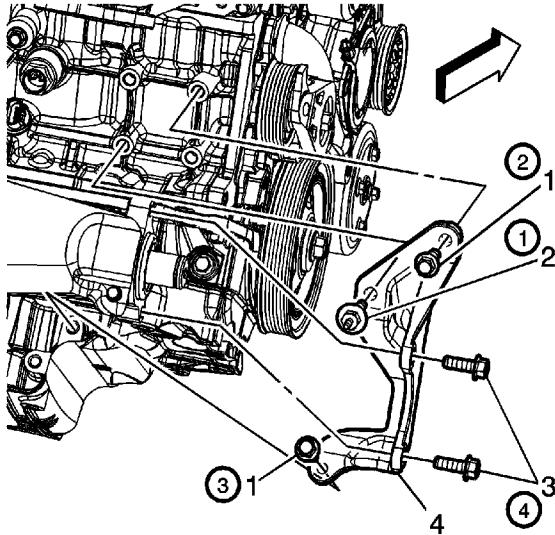
1. If the transfer case heat shield was previously removed, complete the following steps.
 - Install the transfer case heat shield (2).
 - Install the transfer case heat shield bolts (1) and tighten to **10 N·m (89 lb in)**.



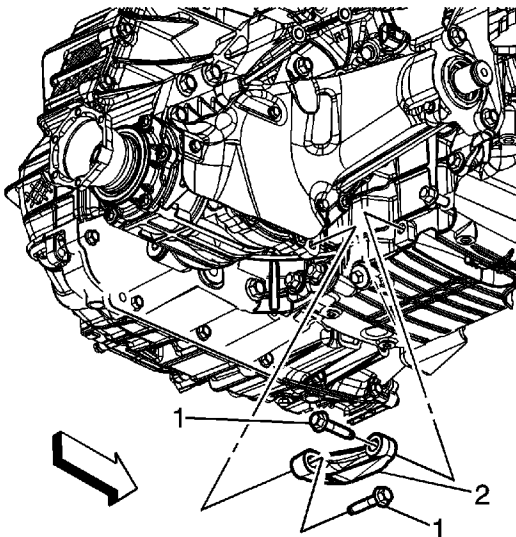
2. Install the transfer case (2) from the transaxle.
3. Install the bolts (1) securing the transfer case to the transaxle. Tighten the bolts to **50 N·m (37 lb ft)**.

4. Install the rear transmission mount and bracket. Refer to [Transmission Mount Bracket Replacement - Rear](#).
5. Remove the jackstand supporting the transaxle.

Note: Tighten the bolts in the specified sequential order.



6. Install the transfer case mounting bracket (4).
7. Install the transfer case mounting bracket bolts (1) and stud (2) and tighten the bolts/studs in specified sequential order to **50 N·m (37 lb ft)**.
8. Install the transfer case mounting bracket bolt (3) and tighten to **23 N·m (17 lb ft)**.



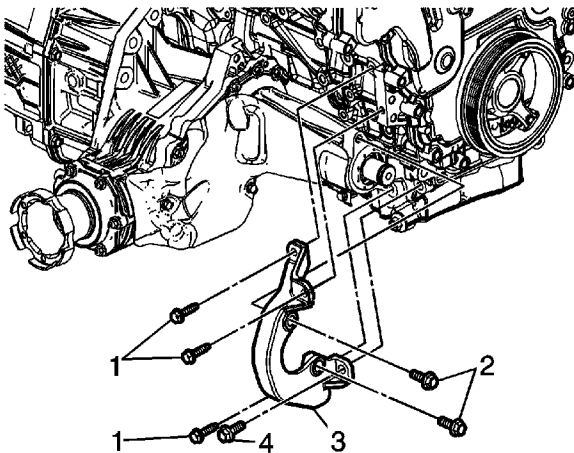
9. Install the transfer case mounting bracket (2).
10. Install the transfer case mounting bracket bolts (1) and tighten to **50 N·m (37 lb ft)**.

11. Install both catalytic converters. Refer to [Catalytic Converter Replacement - Right Side](#) and [Catalytic Converter Replacement - Left Side](#).
12. Install the right wheel drive shaft. Refer to [Front Wheel Drive Shaft Replacement](#).
13. Install the propeller shaft. Refer to [Propeller Shaft Replacement](#).
14. Fill the transfer case with fluid. Refer to [Transfer Case Fluid Replacement](#).
15. Lower the vehicle.

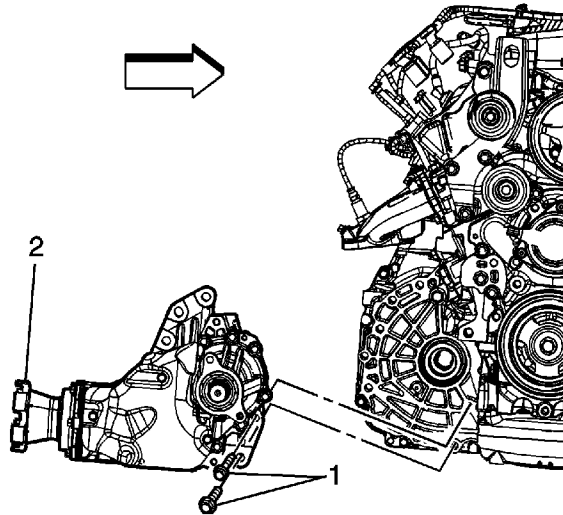
Transfer Case Assembly Replacement (LY7)

Removal Procedure

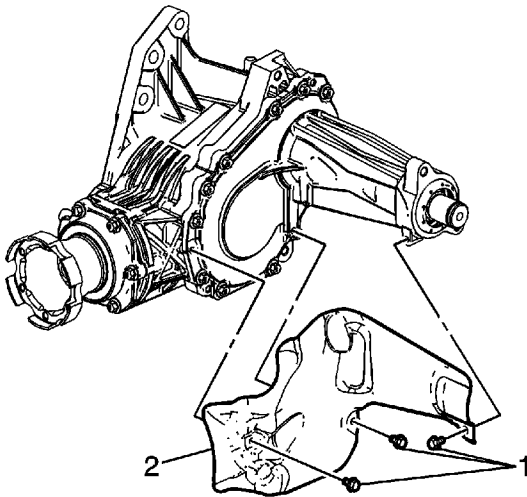
1. Raise and support the vehicle. Refer to [Lifting and Jacking the Vehicle](#).
2. Drain the transfer case fluid. Refer to [Transfer Case Fluid Replacement](#).
3. Remove the propeller shaft. Refer to [Propeller Shaft Replacement](#).
4. Remove the right wheel drive shaft. Refer to [Front Wheel Drive Shaft Replacement](#).
5. Remove both catalytic converters. Refer to [Catalytic Converter Replacement - Right Side](#) and [Catalytic Converter Replacement - Left Side](#).



6. Remove the transfer case mounting bracket bolts (1, 2, 4).
7. Remove the transfer case mounting bracket (3).
8. Support the transaxle with a jackstand.
9. Remove the rear transmission mount and bracket. Refer to [Transmission Mount Bracket Replacement - Rear](#).



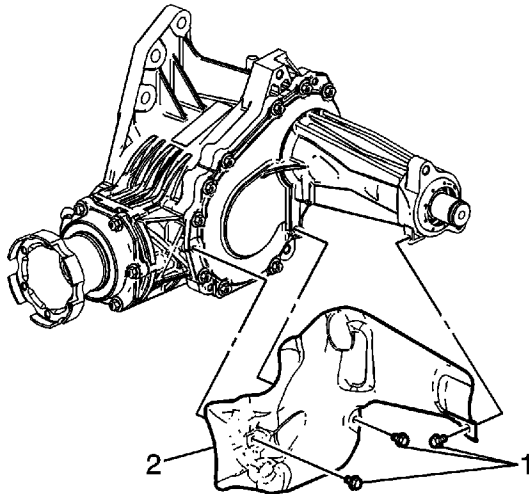
10. Remove the bolts (1) securing the transfer case to the transaxle.
11. Remove the transfer case (2) from the transaxle.



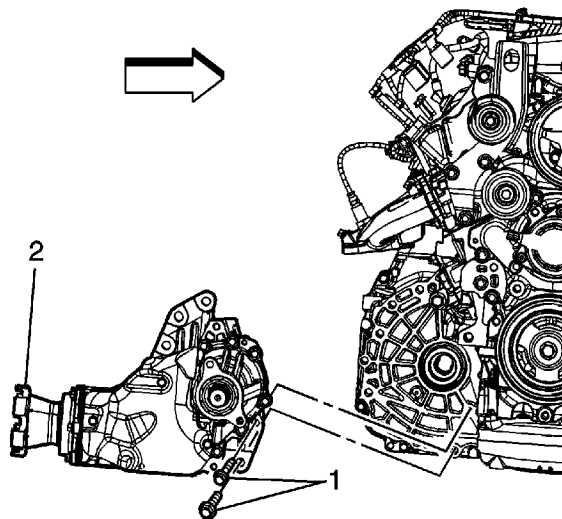
12. If replacing the transfer case, complete the following steps.
 - Remove the transfer case heat shield bolts (1).
 - Remove the transfer case heat shield (2).

Installation Procedure

Caution: Refer to [Fastener Caution](#) in the Preface section.

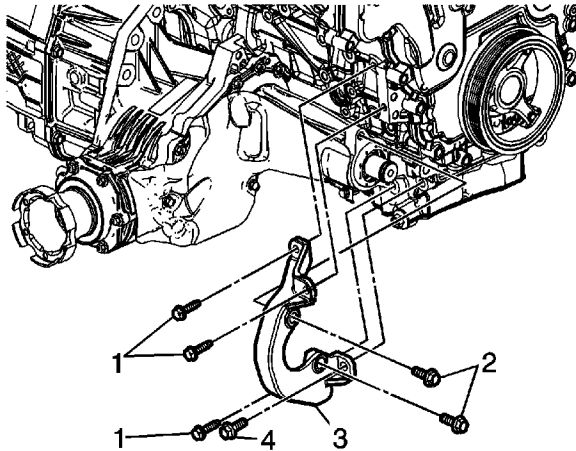


1. If the transfer case heat shield was previously removed, complete the following steps.
 - Install the transfer case heat shield (2).
 - Install the transfer case heat shield bolts (1) and tighten to **10 N·m (89 lb in)**.



2. Install the transfer case (2) from the transaxle.
3. Install the bolts (1) securing the transfer case to the transaxle and tighten the bolts to **50 N·m (37 lb ft)**.
4. Install the rear transmission mount and bracket. Refer to [Transmission Mount Bracket Replacement - Rear](#).
5. Remove the jackstand supporting the transaxle.

Note: Tighten the bolts in the specified sequential order.



6. Install the transfer case mounting bracket (3).
7. Install the transfer case mounting bracket bolts (1) and tighten to **23 N·m (17 lb ft)**.
8. Install the transfer case mounting bracket bolt (4) and tighten to **50 N·m (37 lb ft)**.
9. Install the transfer case mounting bracket bolt (2) and tighten to **50 N·m (37 lb ft)**.
10. Install both catalytic converters. Refer to [Catalytic Converter Replacement - Right Side](#) and [Catalytic Converter Replacement - Left Side](#).
11. Install the right wheel drive shaft. Refer to [Front Wheel Drive Shaft Replacement](#).
12. Install the propeller shaft. Refer to [Propeller Shaft Replacement](#).
13. Fill the transfer case with fluid. Refer to [Transfer Case Fluid Replacement](#).
14. Lower the vehicle.

Transfer Case Disassemble

Table 1: [Housing O-Ring, Vent Assembly, Drain and Fill Plug Removal](#)

Table 2: [Intermediate Drive Shaft Removal](#)

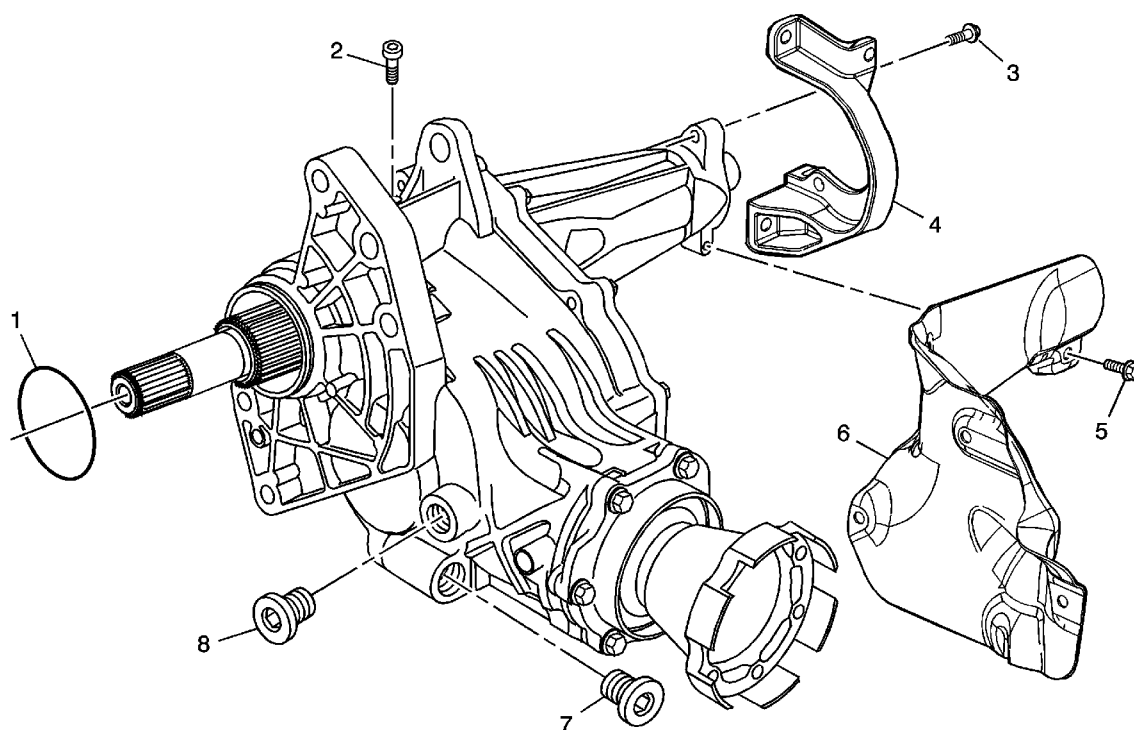
Table 3: [Rear Output Shaft Housing Removal](#)

Table 4: [Right Transfer Case, Input and Output Drive Shaft Removal](#)

Table 5: [Rear Output Shaft Housing Disassembly](#)

Table 6: [Intermediate Drive Shaft Disassembly](#)

Housing O-Ring, Vent Assembly, Drain and Fill Plug Removal



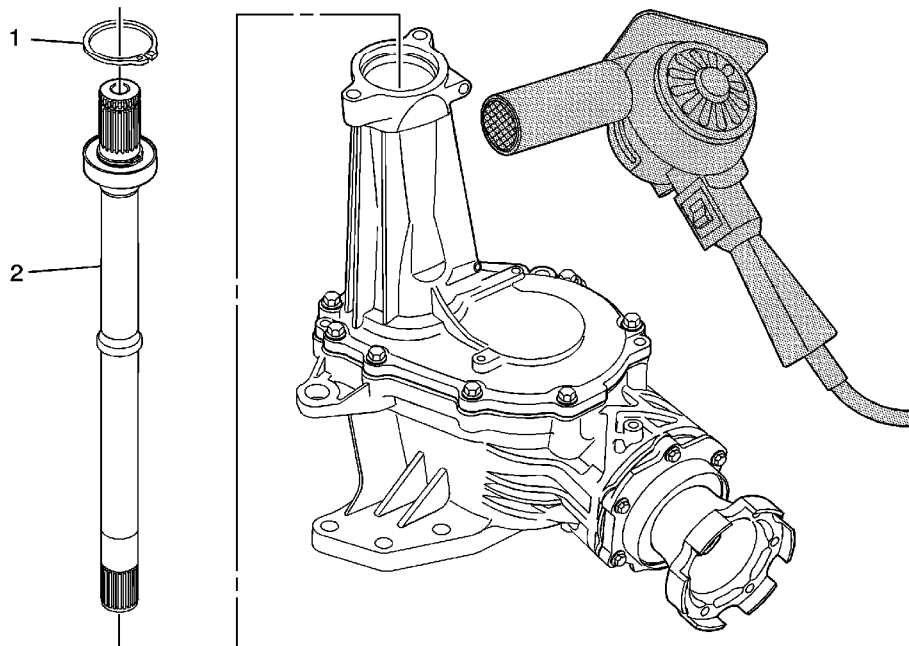
Housing O-Ring, Vent Assembly, Drain and Fill Plug Removal

Callout	Component Name
1	Transfer Case O-Ring Seal
2	Transfer Case Vent Assembly Tip Remove the vent only if damaged or blocked.
3	Transfer Case Bracket Bolts (Qty: 6)

© 2010 General Motors Corporation. All rights reserved.

4	Transfer Case Bracket
5	Transfer Case Heat Shield Bolts (Qty: 3)
6	Transfer Case Heat Shield
7	Transfer Case Drain Plug
8	Transfer Case Fill Plug

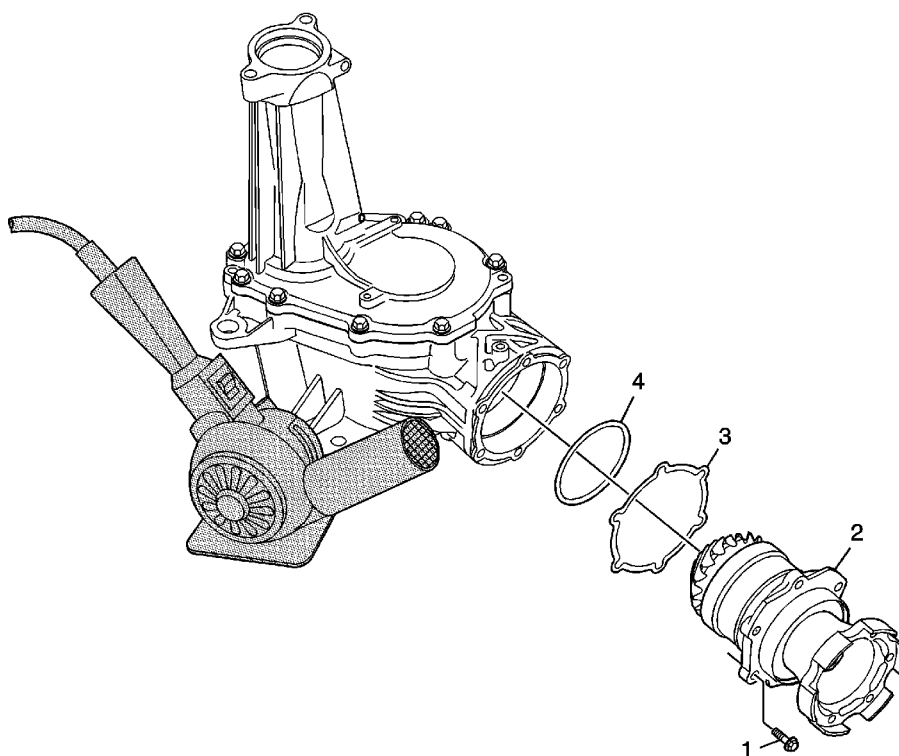
Intermediate Drive Shaft Removal



Intermediate Drive Shaft Removal

Callout	Component Name
1	Front Wheel Drive Retainer
2	Front Wheel Drive Intermediate Shaft
	Special Tools
	J 25070 Heat Gun - 500-750F

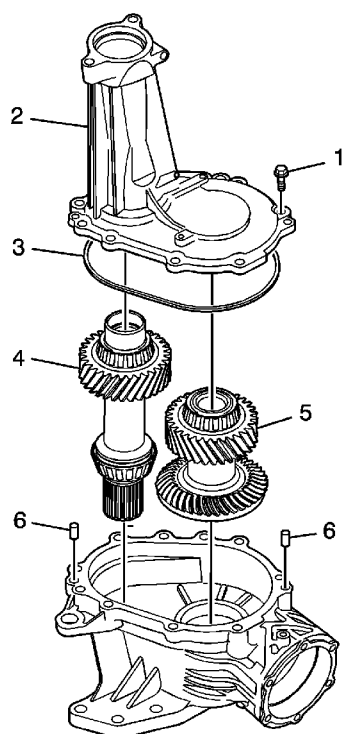
Rear Output Shaft Housing Removal



Rear Output Shaft Housing Removal

Callout	Component Name
1	Transfer Case Rear Output Shaft Housing Bolt (Qty: 6)
2	<p>Transfer Case Rear Output Shaft Housing</p> <p>Tip Locate 2 screwdrivers or prybars to the flange area of the housing to ease removal.</p> <p>Special Tools</p> <p>J 25070 Heat Gun - 500-750F</p>
3	Transfer Case Rear Output Shim
4	<p>Transfer Case Rear Output Shaft Housing Seal O-Ring</p> <p>Tip Discard the O-ring after removal.</p>

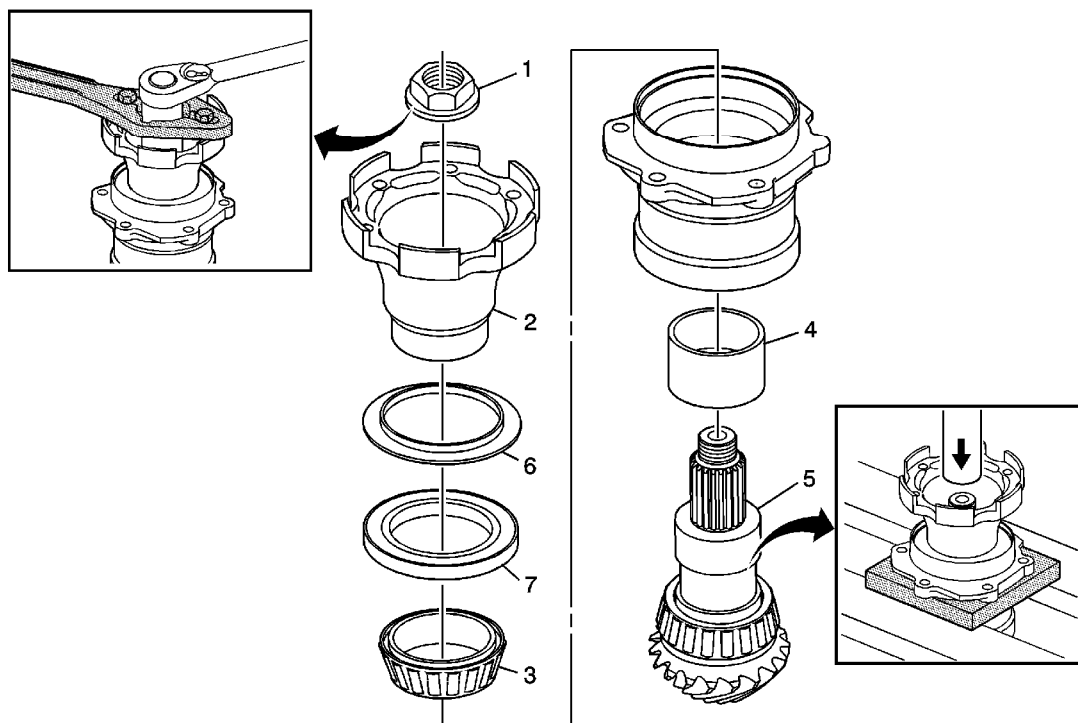
Right Transfer Case, Input and Output Drive Shaft Removal



Right Transfer Case, Input and Output Drive Shaft Removal

Callout	Component Name
1	Transfer Case Half Bolts (Qty: 12)
2	Transfer Case - Right
3	Transfer Case Seal
4	Transfer Case Input Shaft
5	Transfer Case Rear Output Drive Shaft
6	<div>Transfer Case Half Locating Pins (Qty: 2)</div> <div>Tip<ul style="list-style-type: none">• Remove the pins only if damaged.• Inspect the case for similar damage.</div> <div>Refer to Transfer Case Cleaning and Inspection.</div>

Rear Output Shaft Housing Disassembly

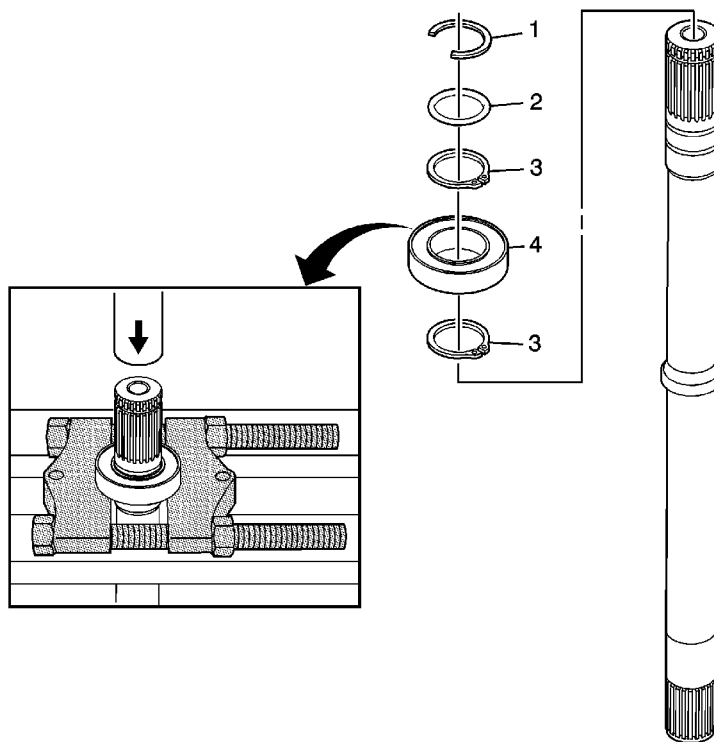


Rear Output Shaft Housing Disassembly

Callout	Component Name
1	Transfer Case Rear Output Drive Gear Nut Tip Use a 30 mm socket or J 29873 . Special Tools J-08614-A Pinion Flange Holder and Remover
2	Transfer Case Rear Output Shaft Flange Special Tools DT-48146 Press Support
3	Transfer Case Rear Output Shaft Bearing Assembly Tip Use a press to remove the output shaft from the housing.
4	Transfer Case Rear Output Shaft Bearing Spacer
5	Transfer Case Rear Output Shaft
6	Transfer Case Rear Output Shaft Oil Slinger Tip

	Remove the slinger only if damaged. Refer to Rear Output Drive Housing Cleaning and Inspection .
7	Transfer Case Rear Output Shaft Seal Tip Discard the seal after removal.

Intermediate Drive Shaft Disassembly

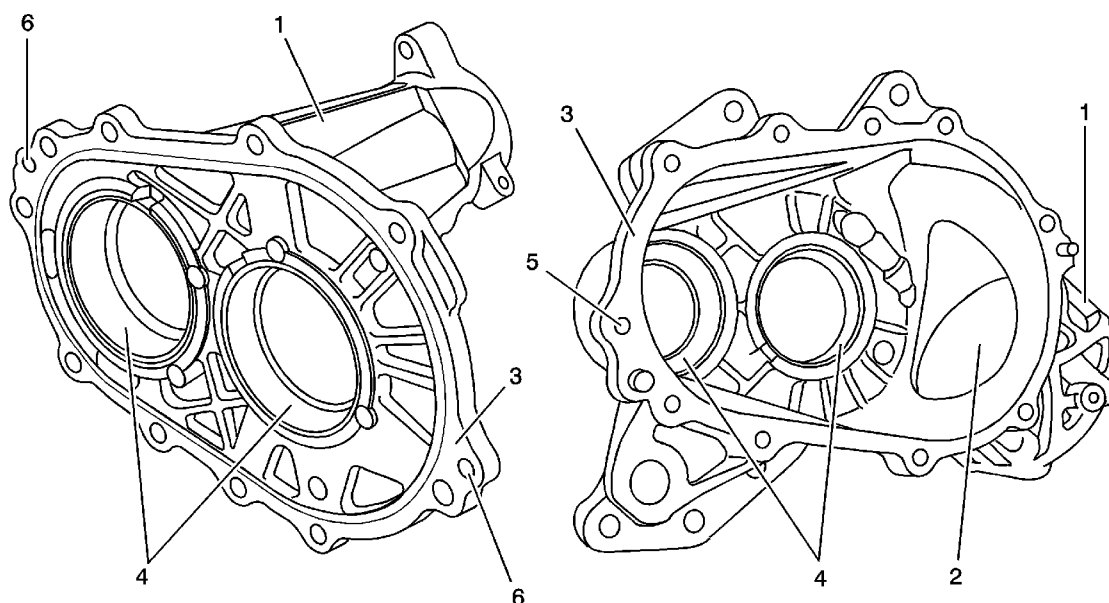


Intermediate Drive Shaft Disassembly

Callout	Component Name
1	Half Shaft Retainer
2	O-Ring
3	Front Wheel Drive Intermediate Shaft Bearing Retainers (Qty: 2)
4	Front Wheel Drive Intermediate Shaft Bearing Assembly Tip Use a press, with the J 22912-B flat side up, in order to remove the bearing assembly. Special Tools

[J 22912-B](#) Rear Pinion and Axle Bearing Remover

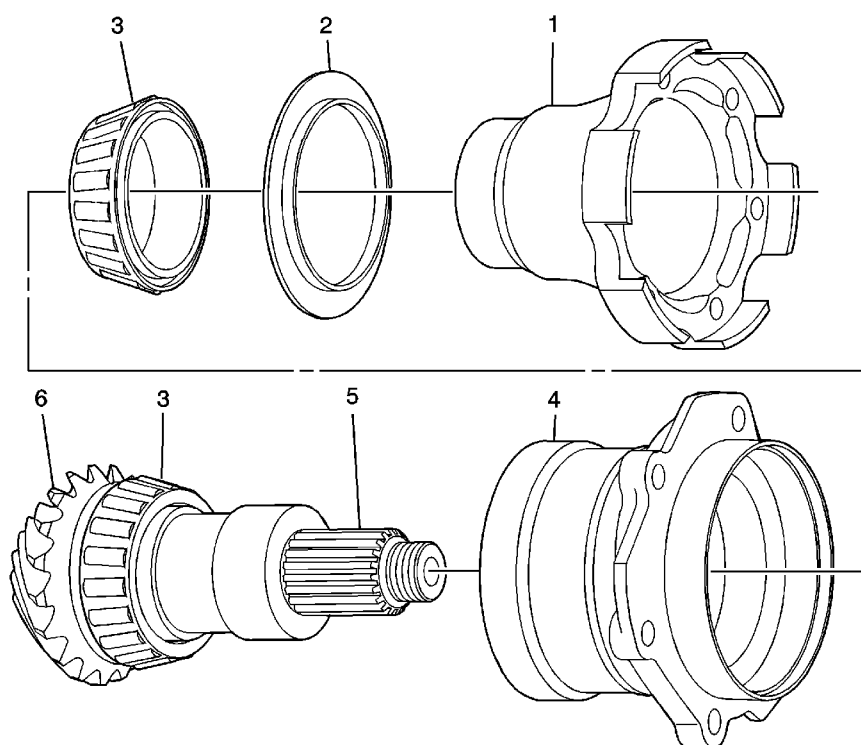
Transfer Case Cleaning and Inspection



Callout	Component Name
Caution: Refer to Machined Surface Damage Caution in the Preface section.	
Preliminary Procedure	
<ol style="list-style-type: none">1. Inspect all components or sub-components and perform any repair procedure necessary to fix the damage. If the damage cannot be repaired, replace the component or sub-component as indicated.2. Clean the left and right transfer case in cleaning solvent and air dry.	
1	Transfer Case - Left and Right Tip Inspect for cracks, broken areas, or other damage. The transfer case assembly must be replaced if damage is found.
2	Transfer Case Rear Output Drive Housing Bore Tip Repair small scratches or nicks with light sanding.
3	Case Sealing Surface

	Tip Repair small scratches or nicks with a soft stone.
4	Transfer Case Bearing Races Tip Replace the transfer case assembly if a bearing has spun or if cracks are detected.
5	Transfer Case Thread Bolt Holes Tip Repair any damaged threads.
6	Transfer Case Half Locating Pin Holes

Rear Output Drive Housing Cleaning and Inspection

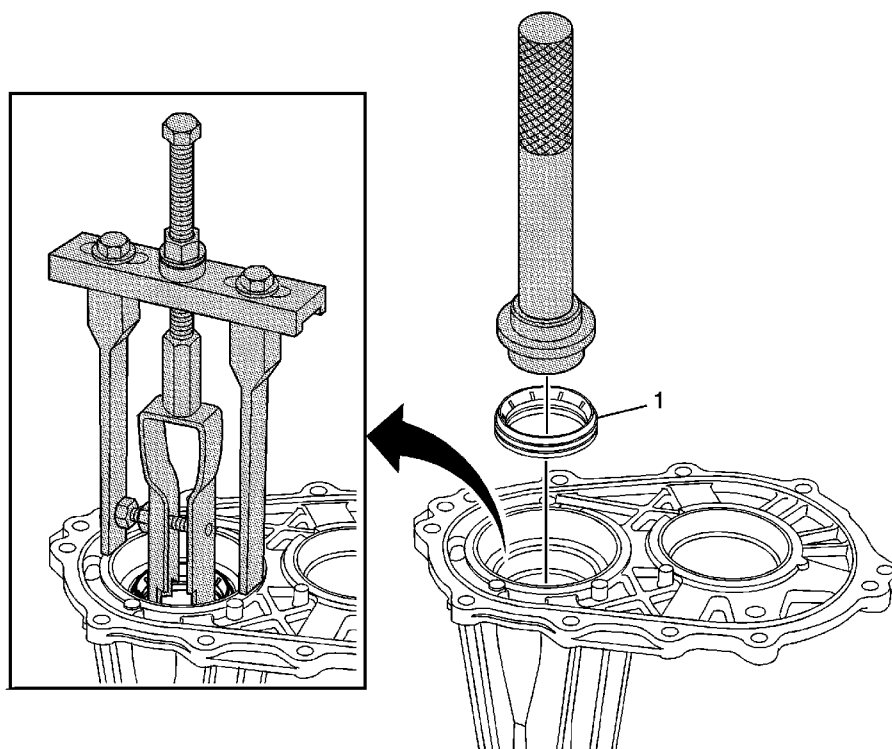


Callout	Component Name
Preliminary Procedures <ol style="list-style-type: none">Inspect all components or sub-components and perform any repair procedure necessary to fix the damage. If the damage cannot be repaired, replace the component or sub-component as indicated.Clean all components in cleaning solvent and air dry.The transfer case rear output drive housing is not serviced. If damage cannot be repaired, the transfer case must be replaced.	
1	Transfer Case Rear Output Shaft Flange Tip <ul style="list-style-type: none">Replace if flange, threaded holes, or splines are damaged.Inspect sealing surface for corrosion, excessive wear, or damage.
2	Transfer Case Rear Output Shaft Oil Slinger Tip Replace the slinger if damaged, cracked, loose, or distorted.
	Transfer Case Rear Output Shaft Bearing Assembly

© 2010 General Motors Corporation. All rights reserved.

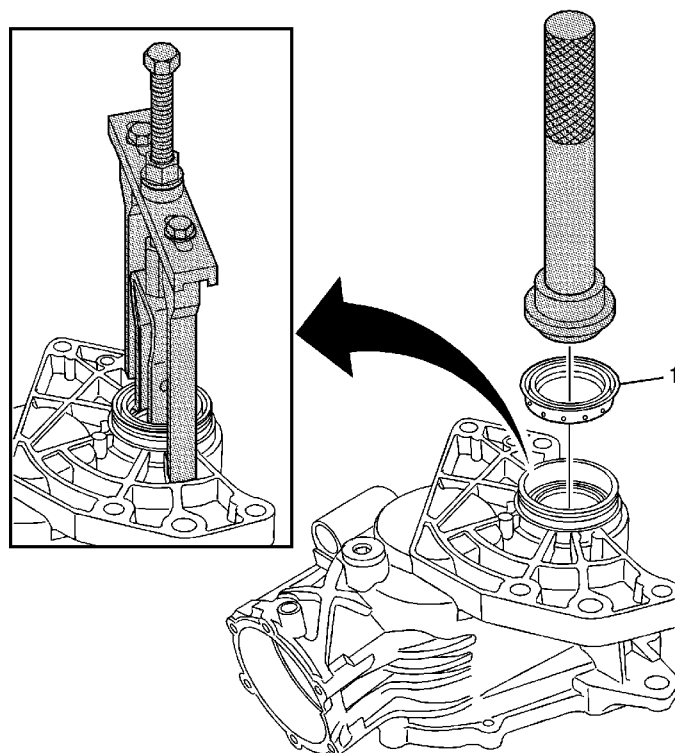
3	Tip Inspect bearings for roughness, spalling, or pitting.
4	Transfer Case Rear Output Shaft Housing Tip <ul style="list-style-type: none">• Inspect for cracks, broken areas, or other damage.• Inspect bearing races for roughness, brinelling, or pitting.• Inspect the O-ring channel for porosity or damage.• Scratches or nicks in other areas may be repaired with light sanding.
5	Transfer Case Rear Output Shaft Splines Tip Inspect for damage and press fit to flange.
6	Transfer Case Rear Output Shaft Tip Inspect for pitting, excessive wear, or damage.

Input Shaft Seal Replacement - Right



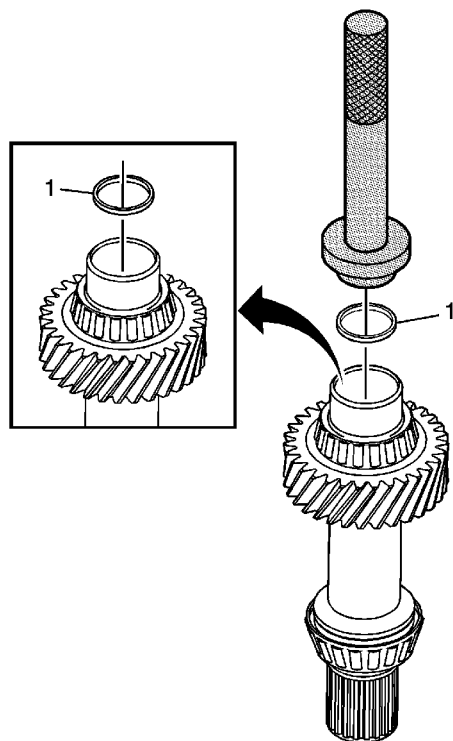
Callout	Component Name
	Transfer Case Input Shaft Seal - Right
	Caution: Do not use a screwdriver or punch to remove the seal. Using a screwdriver or punch to remove the seal may damage the aluminum housing sealing surface.
1	Special Tools <ul style="list-style-type: none">• <i>DT-48074</i> Input and Output Shaft Seal Installer• <i>J-8092</i> Driver Handle• <i>J-26941</i> Bushing and Bearing Remover - 3-4 in• <i>J-45124</i> Removal Bridge

Input Shaft Seal Replacement - Left



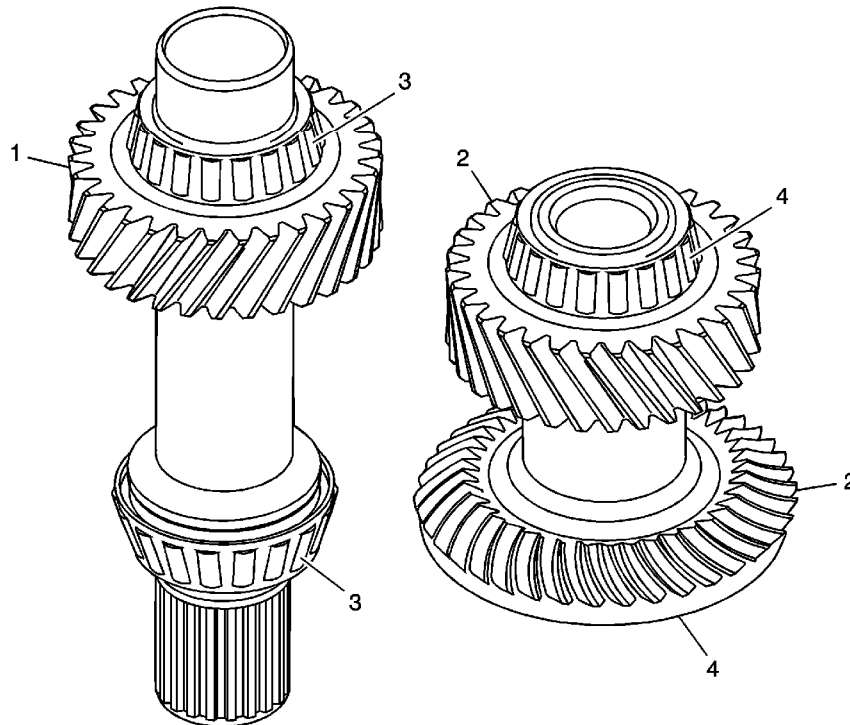
Callout	Component Name
	Transfer Case Input Shaft Seal - Left
	Caution: Do not use a screwdriver or punch to remove the seal. Using a screwdriver or punch to remove the seal may damage the aluminum housing sealing surface.
1	Special Tools <ul style="list-style-type: none">• <i>DT-48074</i> Input and Output Shaft Seal Installer• <i>J-8092</i> Driver Handle• <i>J-26941</i> Bushing and Bearing Remover - 3-4 in• <i>J-45124</i> Removal Bridge

Front Drive Axle Inner Shaft Seal Replacement



Callout	Component Name
1	<p>Front Drive Axle Intermediate Shaft Seal Assembly</p> <p>Tip DT-48078 seats the seal to a specific depth. Other installation methods may set the seal to a non-functional depth.</p> <p>Special Tools</p> <ul style="list-style-type: none">• DT-48078 Inner Drive Shaft Seal Installer• J 8092 Driver Handle

Input Shaft and Rear Output Drive Shaft Cleaning and Inspection



Callout	Component Name
Preliminary Procedures <ol style="list-style-type: none"> 1. Inspect all components or sub-components and perform any repair procedure necessary to fix the damage. If the damage cannot be repaired, replace the component or sub-component as indicated. 2. Clean all components in cleaning solvent and air dry. 3. The transfer case input shaft and transfer case rear output drive shaft is not serviced. If damage cannot be repaired, the transfer case must be replaced. 	
1	Transfer Case Input Shaft Gear Tip Inspect for pitting, excessive wear, or damage.
2	Transfer Case Rear Output Drive Shaft Gear Tip Inspect for pitting, excessive wear, or damage.
	Transfer Case Input Shaft Bearing Assembly

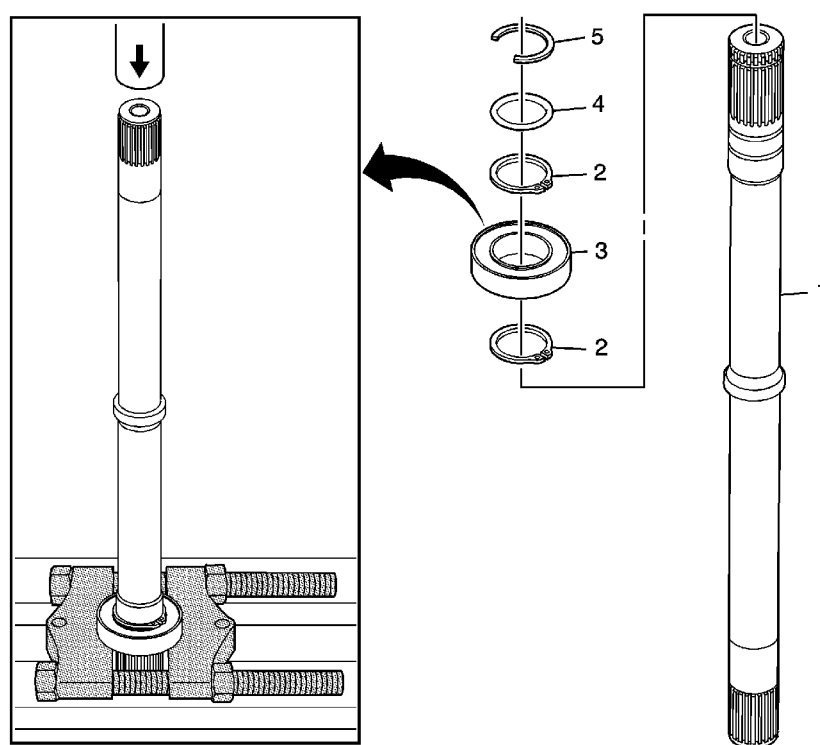
© 2010 General Motors Corporation. All rights reserved.

3	Tip Inspect bearings for roughness, spalling, or pitting.
4	Transfer Case Rear Output Drive Shaft Bearing Assembly Tip Inspect bearings for roughness, spalling, or pitting.

Transfer Case Assemble

- Table 1: [Intermediate Drive Shaft Assembly](#)
Table 2: [Rear Output Shaft Housing Assembly](#)
Table 3: [Output Flange Installation](#)
Table 4: [Right Transfer Case, Input Shaft, and Output Drive Shaft Installation](#)
Table 5: [Rear Output Shaft Housing Installation](#)
Table 6: [Intermediate Drive Shaft Installation](#)
Table 7: [Housing O-Ring, Vent Assembly, Drain and Fill Plug Installation](#)

Intermediate Drive Shaft Assembly



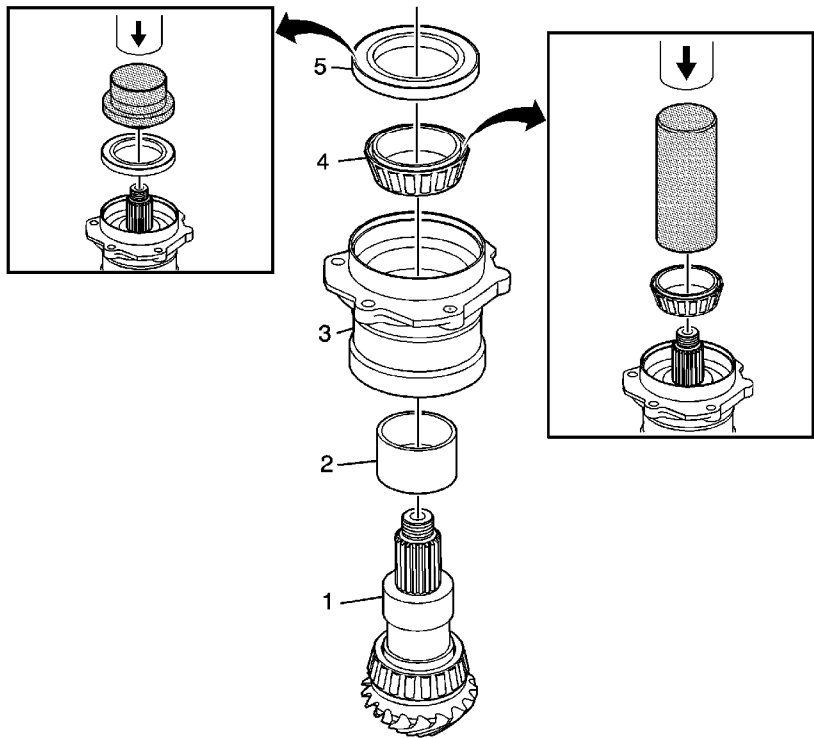
Intermediate Drive Shaft Assembly

Callout	Component Name
1	Front Wheel Drive Intermediate Shaft
2	Front Wheel Drive Intermediate Shaft Bearing Retainers (Qty: 2)
	Front Wheel Drive Intermediate Shaft Bearing Assembly
	Tip Use a press, with the <i>J-22912-B</i> Rear Pinion and Axle Bearing Remover flat side up,

© 2010 General Motors Corporation. All rights reserved.

3	<div>in order to install the bearing assembly.</div> <div>Special Tools</div> <div><i>J-22912-B</i> Rear Pinion and Axle Bearing Remover</div>
4	O-Ring
5	Half Shaft Retainer

Rear Output Shaft Housing Assembly

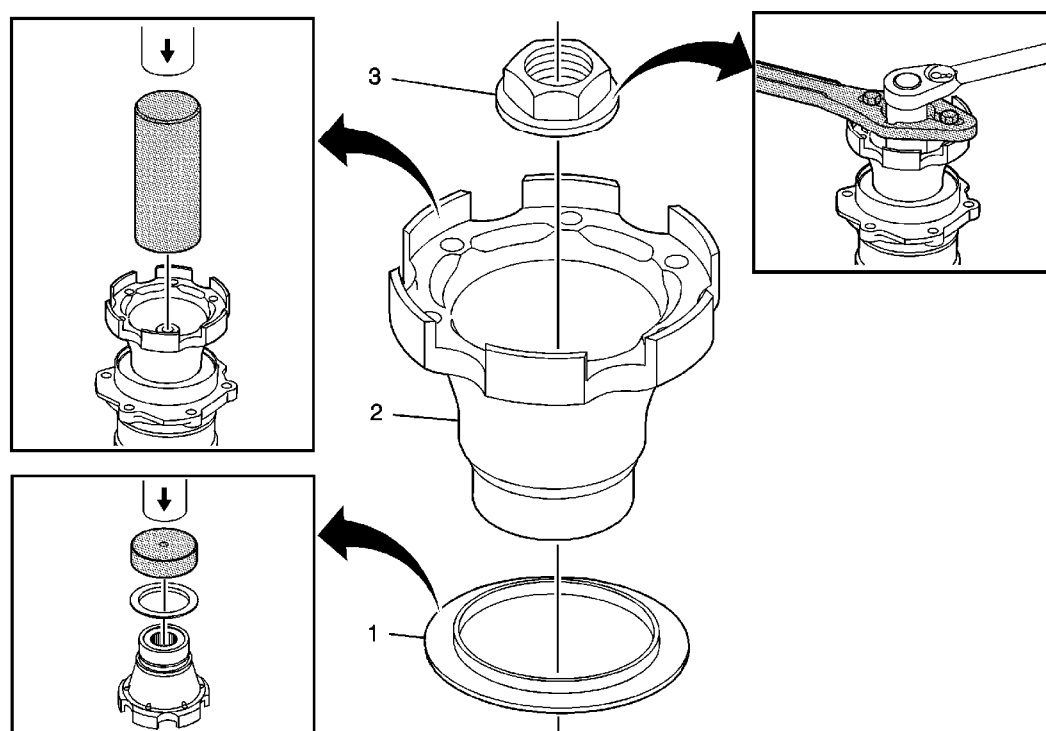


Rear Output Shaft Housing Assembly

Callout	Component Name
1	Transfer Case Rear Output Shaft
2	Transfer Case Rear Output Shaft Bearing Spacer
3	Transfer Case Rear Output Shaft Housing
4	<div>Transfer Case Rear Output Shaft Bearing Assembly</div> <div>Tip Use a press with the <i>J-5590</i> Pinion Bearing Race Installer - Rear to install the housing and bearings to the output shaft.</div> <div>Special Tools</div>

	<i>J-5590</i> Pinion Bearing Race Installer - Rear
5	<p>Transfer Case Rear Output Shaft Seal</p> <p>Tip Use a press with the <i>DT-48075</i> Output Shaft Seal Installer to install the seal.</p> <p>Special Tools</p> <p><i>DT-48075</i> Output Shaft Seal Installer</p>

Output Flange Installation

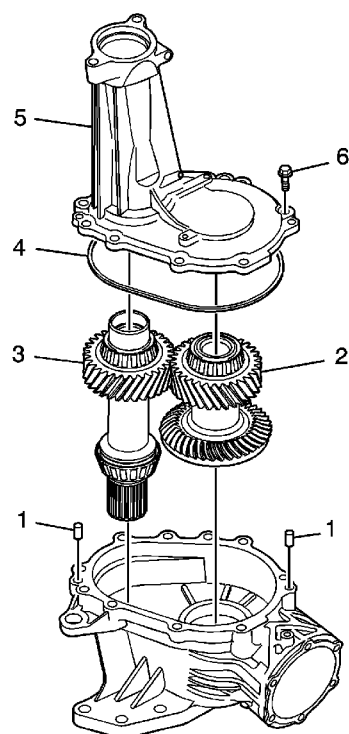


Output Flange Installation

Callout	Component Name
1	<p>Transfer Case Rear Output Shaft Oil Slinger</p> <p>Tip Use a press with the <i>DT-48077</i> Output Shaft Slinger Installer in order to install the slinger.</p> <p>Special Tools</p> <p><i>DT-48077</i> Output Shaft Slinger Installer</p>

2	<p>Transfer Case Rear Output Shaft Flange</p> <p>Tip Use a press with the <i>J-5590</i> Pinion Bearing Race Installer - Rear to install the flange.</p> <p>Special Tools</p> <p><i>J-5590</i> Pinion Bearing Race Installer - Rear</p>
3	<p>Transfer Case Rear Output Shaft Nut</p> <p>Caution: Refer to Fastener Caution in the Preface section.</p> <p>Tip Use a 30 mm socket or the <i>J-29873</i> Injector Nozzle Socket 30 mm and the <i>J-08614-A</i> Pinion Flange Holder and Remover .</p> <p>Tighten 235 N·m (173 lb ft)</p> <p>Special Tools</p> <ul style="list-style-type: none"> • <i>J-08614-A</i> Pinion Flange Holder and Remover • <i>J-29873</i> Injector Nozzle Socket 30 mm

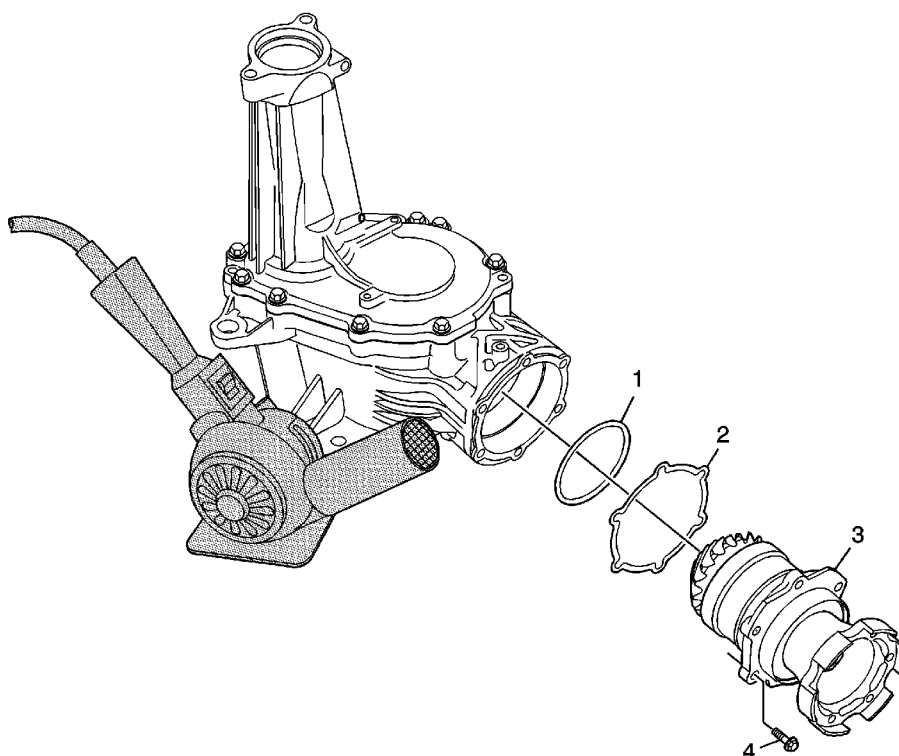
Right Transfer Case, Input Shaft, and Output Drive Shaft Installation



Right Transfer Case, Input Shaft, and Output Drive Shaft Installation

Callout	Component Name
1	Transfer Case Half Locating Pins
2	Transfer Case Rear Output Drive Shaft
3	Transfer Case Input Shaft Tip Install the input and output shafts as a set with the splines engaged.
4	Transfer Case Seal
5	Transfer Case - Right
6	Transfer Case Half Bolts (Qty: 12) Caution: Refer to Fastener Caution in the Preface section. Tighten 29 N·m (21 lb ft)

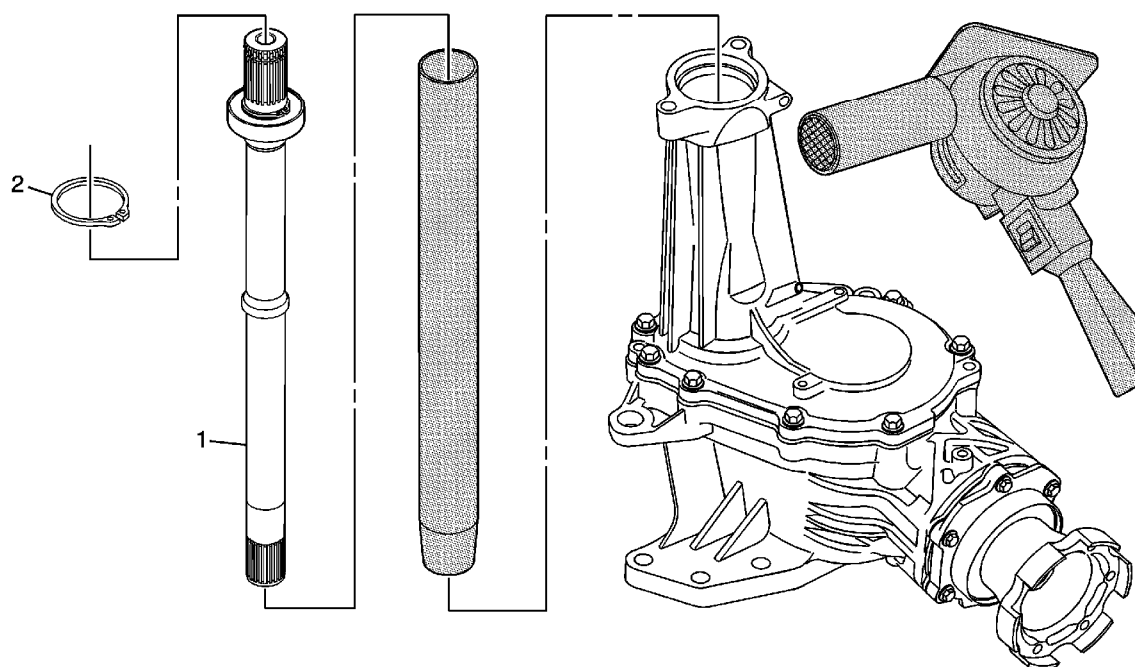
Rear Output Shaft Housing Installation



Rear Output Shaft Housing Installation

Callout	Component Name
1	Transfer Case Rear Output Shaft Housing Seal O-Ring
2	Transfer Case Rear Output Shim
3	<p>Transfer Case Rear Output Shaft Housing</p> <p>Caution: Do not use a drive hammer when the splines are not engaged. Use of a drive hammer when the splines are not engaged will damage the output shaft teeth.</p> <p>Tip</p> <ul style="list-style-type: none"> • Use of a heat gun allows easy alignment of the bolt holes to the housing during assembly. • Rotate the pinion gear during assembly to engage the gear teeth. <p>Special Tools</p> <p>J-25070 Heat Gun - 500-750F</p>
4	<p>Transfer Case Rear Output Shaft Housing Bolts (Qty: 6)</p> <p>Caution: Refer to Fastener Caution in the Preface section.</p> <p>Tighten</p> <p>29 N·m (21 lb ft)</p>

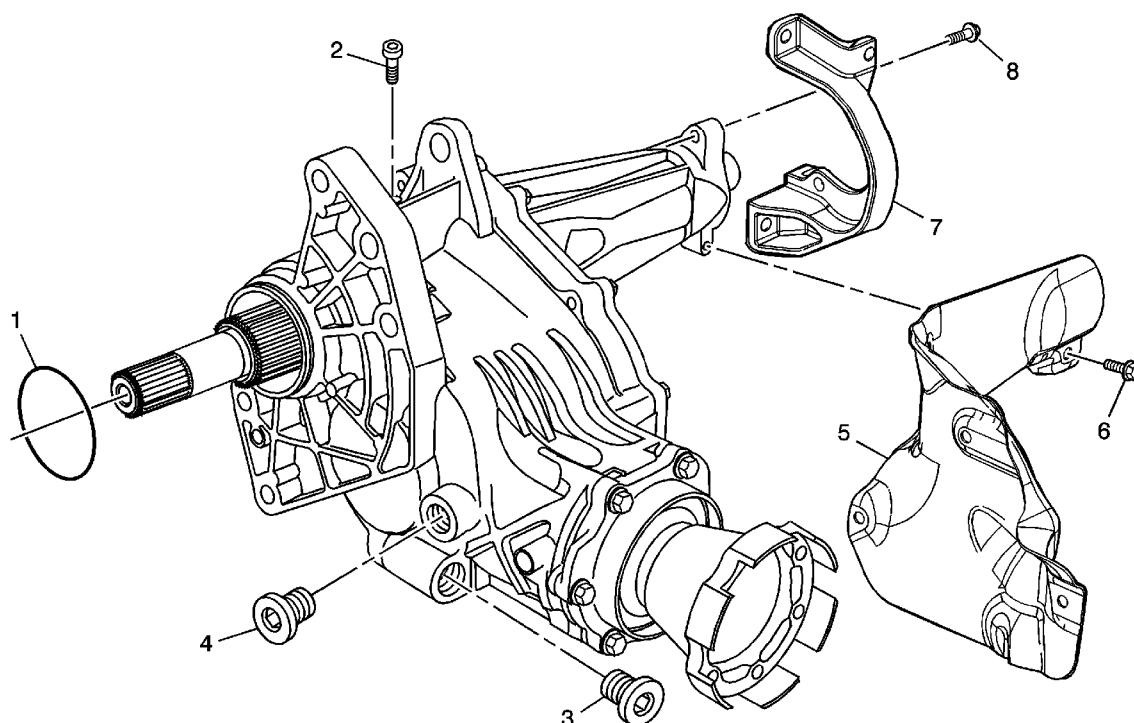
Intermediate Drive Shaft Installation



Intermediate Drive Shaft Installation

Callout	Component Name
1	<p>Front Wheel Drive Intermediate Shaft</p> <p>Caution: DT-48094 must be used over the intermediate shaft prior to installation in order to protect the intermediate shaft seal from damage.</p> <p>Special Tools</p> <ul style="list-style-type: none">• <i>DT-48094</i> Inner Drive Shaft Seal Protector• <i>J-25070</i> Heat Gun - 500-750F
2	Front Wheel Drive Retainer

Housing O-Ring, Vent Assembly, Drain and Fill Plug Installation



Housing O-Ring, Vent Assembly, Drain and Fill Plug Installation

Callout	Component Name
1	Transfer Case O-Ring Seal
2	Transfer Case Vent Assembly Tip Replace the vent if damaged or blocked.
3	Drain Plug Caution: Refer to Component Fastener Tightening Caution in the Preface section. Tighten 39 N·m (29 lb ft)
4	Fill Plug Tighten 39 N·m (29 lb ft)
5	Transfer Case Heat Shield
6	Transfer Case Heat Shield Bolts (Qty: 3) Caution: Refer to Fastener Caution in the Preface section. Tighten 11 N·m (97 lb in)

7	Transfer Case Bracket
8	Transfer Case Bracket Bolts (Qty: 2) Tip Tighten the bracket bolts to light assembly torque. Tighten to specification after the transfer case is mounted in the vehicle. Refer to Fastener Tightening Specifications .