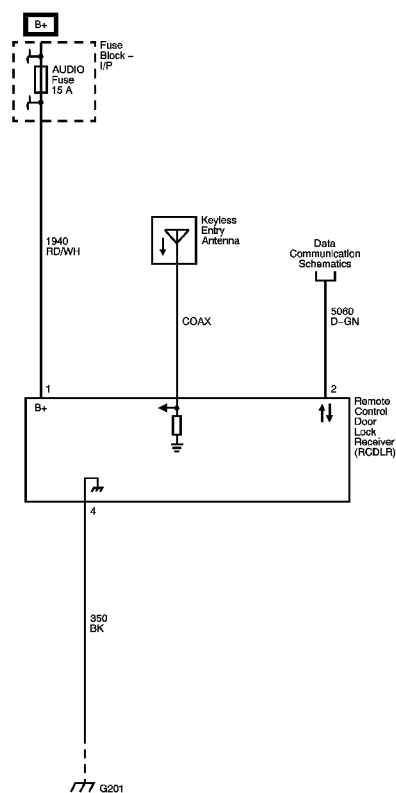
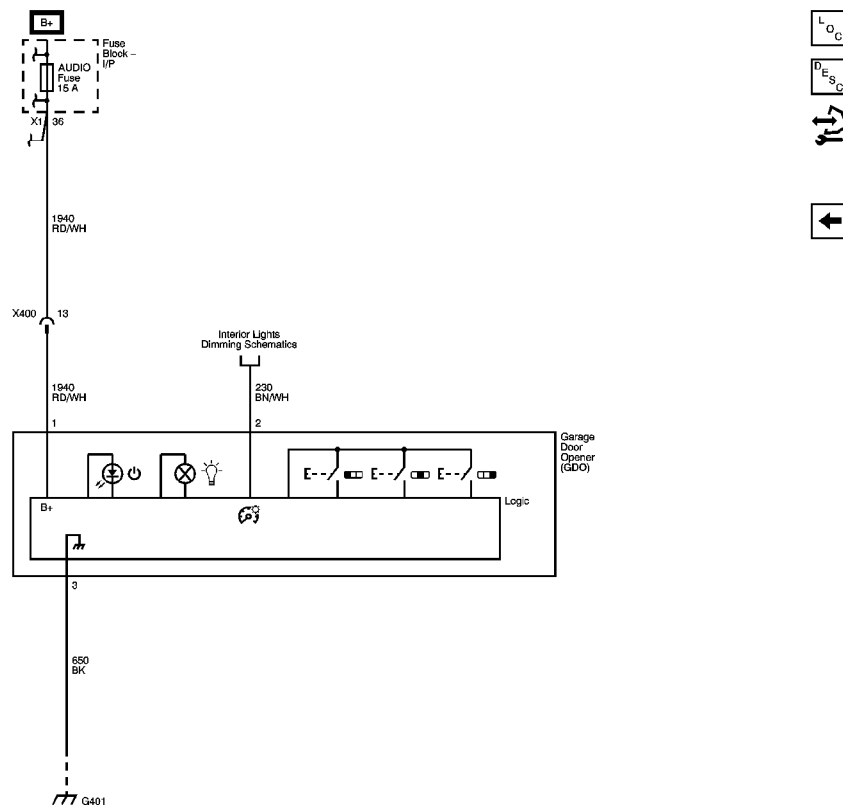


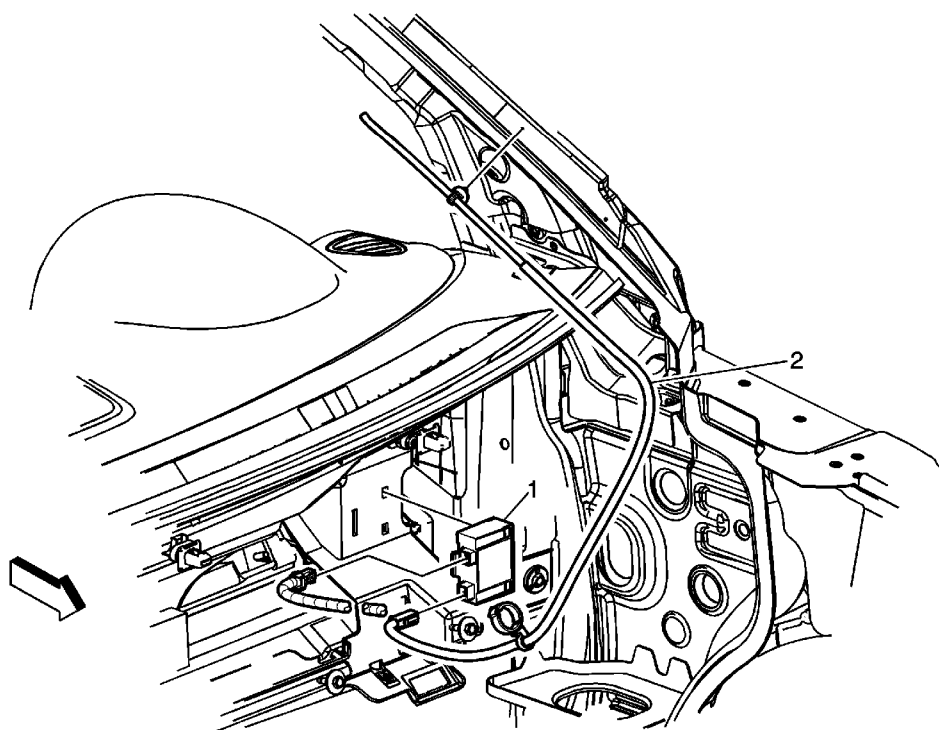
Keyless Entry



Garage Door Opener



Ignition Lock Key Transmitter Antenna Replacement - Instrument Panel

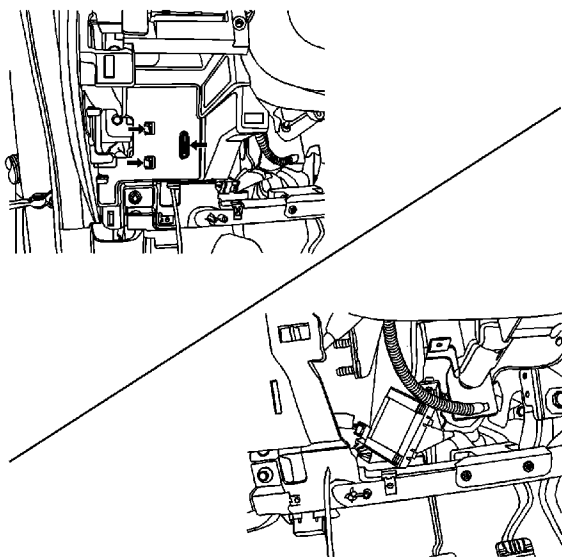


Callout	Component Name
Preliminary Procedure	
<ol style="list-style-type: none">1. Remove driver side windshield garnish molding. Refer to Windshield Pillar Garnish Molding Replacement2. Remove remote control door lock receiver. Refer to Remote Control Door Lock Receiver Replacement	
1	Remote Control Door Lock Receiver Assembly
2	<p>Ignition Lock Key Transmitter Antenna Assembly</p> <ol style="list-style-type: none">1. Unclip antenna lower retainer from wire harness.2. Unclip upper antenna from windshield pillar.3. Attach mechanics wire to top of antenna. Pull antenna and wire through bottom of IP.

Remote Control Door Lock Receiver Replacement

Removal Procedure

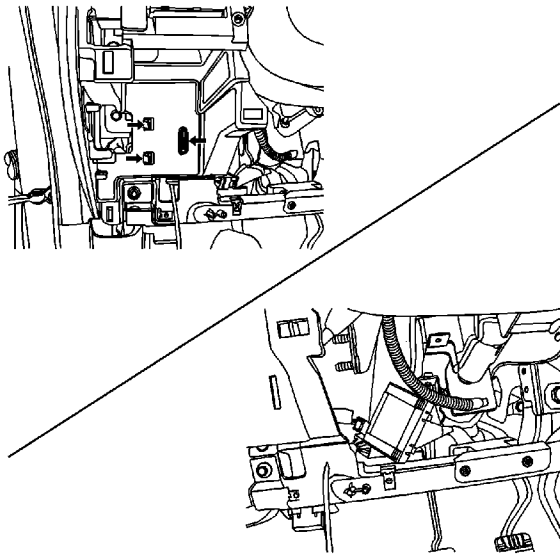
Warning: Refer to [Battery Disconnect Warning](#) in the Preface section.



1. Disconnect the negative battery cable.
2. Remove the driver knee bolster. Refer to [Driver Knee Bolster Replacement](#).
3. Remove the remote control door lock receiver.
4. Disconnect the electrical connector.

Perform the SPO reprogramming when RFA receiver is replaced.

Installation Procedure



1. Connect the electrical connector.
2. Install the remote control door lock receiver.
3. Install the driver knee bolster. Refer to [Driver Knee Bolster Replacement](#).
4. Connect the negative battery cable.
5. For set up and programming, refer to [Control Module References](#).

Garage Door Opener Programming - Universal (One LED)

Important: Do not use the garage door opener (GDO) with any garage door opener that does not have the stop and reverse safety feature. This includes any garage door opener model manufactured before April 1, 1982.

Be sure that people and objects are clear of the garage door you are programming.

The GDO is programmed by using the customer's hand-held transmitter(s).

Turn the ignition ON while programming the GDO transmitter. Follow these steps to program up to 3 channels:

1. If you have previously programmed a transmitter, proceed to Step 2. Otherwise, hold down the 2 outside buttons on the GDO transmitter for approximately 20 seconds, until the light on the GDO transmitter begins to flash rapidly. Then release the buttons. This procedure erases any previous settings and initializes the memory for all 3 channels.
2. Decide which of the 3 channels you want to program to the transmitter you have.
3. Hold the end of the hand-held transmitter against the front surface of the GDO (less than 1 inch) so you can still see the light.
4. Using both hands, press the hand-held transmitter button and the desired button on the GDO transmitter. Continue to hold both buttons through Step 5.

Important: The GDO is compatible with most, but not all, types and brands of transmitters. If the GDO light does not flash rapidly after 90 seconds, there may be a compatibility conflict with the transmitter used to program the GDO. Call 1-800-355-3515 in order to address this problem.

5. Hold down the buttons on both transmitters until you see the light on the GDO transmitter flash slowly and then rapidly. The rapid flashing, which could take up to 90 seconds, indicates that the GDO transmitter has been programmed. Release the buttons on both transmitters when the light starts to flash rapidly.

Training the GDO for Rolling Code Receivers

This procedure is for training the customer's rolling code garage door openers to their GDO transmitter. The GDO must already be programmed to its hand-held transmitter. The training process below must be completed within 30 seconds or it must be repeated.

1. Locate the train button on the garage door opener receiver. Refer to the operator's manual for the garage door opener (or call 1-800-355-3515 for assistance). Follow instructions for the garage door opener in order to determine when the unit is in train mode.
2. Return to the GDO transmitter in the vehicle, and press the button that you want trained for rolling codes 3 times, for 1 second each time. If not successfully programmed, try 2-5 seconds each time.
3. Press the button used again in order to verify that the GDO transmitter has been programmed.

You may use either the hand-held transmitter or the GDO to open the garage door.

© 2010 General Motors Corporation. All rights reserved.

The GDO is compatible with most, but not all, types and brands of transmitters. If the GDO light does not flash rapidly after 90 seconds, there may be a compatibility conflict with the transmitter used to program the GDO. Call 1-800-355-3515 in order to address compatibility concerns.

Erasing Channels

To erase programmed channels, hold down the 2 outside buttons until the light on the GDO transmitter begins to flash. Individual channels cannot be erased, but can be reprogrammed using the Garage Door Opener Programming and the Training GDO for Rolling Code Receivers procedures.

Non-Compatible Garage Door Openers

Manufacturer	Model Number
Chamberlain	G-3467
Click Card	ATDG-90
Genie	AR-55
Genie	AR-30
Linear	Code Red
Linear	Moore-o-matic
Linear	DX Format
Micom	Safeway
Pulsar/Allister	20
Skylink	Skylink
Stanley	1048
Stanley	1054
Stanley	1064
Telectron	T-22A
Telectron	T-80
Telectron	T-80G
Telectron	TP-21

Garage Door Opener Programming - Universal (Three LEDs)

Important: Do not use the garage door opener (GDO) with any garage door opener that does not have the stop and reverse safety feature. This includes any garage door opener model manufactured before April 1, 1982.

Be sure that people and objects are clear of the garage door you are programming.

Programming the GDO for Rolling Code Receivers

This procedure is for training the customer's rolling code garage door openers to their GDO transmitter. The training process below must be completed within 30 seconds or it must be repeated.

1. Press the two outside buttons on the GDO for one to two seconds and immediately release them.
2. Locate the train button on the garage door opener receiver. Refer to the operator's manual for the garage door opener (or call 1-866-572-2728 for assistance). Follow instructions for the garage door opener in order to determine when the unit is in train mode.
3. Return to the GDO transmitter in the vehicle, and press the button that you want trained for rolling codes 5 to 20 seconds. The LED above the button will flash slowly. When the garage door moves, release the button. The LED will then flash rapidly until programming is complete.
4. Press the button used again in order to verify that the GDO transmitter has been programmed.

You may use either the hand-held transmitter or the GDO to open the garage door.

The GDO is compatible with most, but not all, types of garage door openers. If the GDO light does not flash rapidly after 90 seconds, there may be a compatibility conflict with the garage door opener. Call 1-866-572-2728 in order to address compatibility concerns.

Programming the GDO for Fixed Code Receivers

This procedure is for training the customer's fixed code garage door openers to their GDO transmitter. To determine if the customer has a fixed code garage door opener, remove the battery cover on the manufacturer's supplied transmitter. If a row of dip switches is present, the garage door opener is then a fixed code version. The transmitter should have anywhere from 8 to 12 switches. The garage door opener receiver may also have a set of dip switches. If the number of switches on the receiver and on the transmitter do not match, use the receiver switches to program the GDO. Each dip switch may have either two or three positions. The two position switch can either be on or off. The three position switch can either be on, neutral, or off.

1. Write down the positions of the dip switches. The positions of the switches will be entered from left to right into the GDO using the three buttons.
2. Press all three buttons on the GDO for about three seconds and immediately release them. The LEDs should flash slowly, indicating that the GDO is in programming mode.
3. Enter the positions of the dip switches one at a time. If a position of a dip switch is on, press

© 2010 General Motors Corporation. All rights reserved.

the left button on the GDO. If the position is neutral, press the middle button of the GDO. If the position is off, press the right button of the GDO. Enter all of the positions of the dip switches. The procedure must be completed in two and one half minutes.

4. After entering all of the switch positions, firmly press and release all three buttons at the same time. The indicator lights will turn on.
5. Press the button that you want trained to control the garage door. The LED above the button will flash slowly. You will have to hold the button from 5 to 55 seconds. When the garage door moves, release the button. The LED will then flash rapidly until programming is complete.
6. Press the button used again in order to verify that the GDO transmitter has been programmed.

You may use either the hand-held transmitter or the GDO to open the garage door.

The GDO is compatible with most, but not all, types of garage door openers. If the GDO light does not flash rapidly after 90 seconds, there may be a compatibility conflict with the garage door opener. Call 1-866-572-2728 in order to address compatibility concerns.

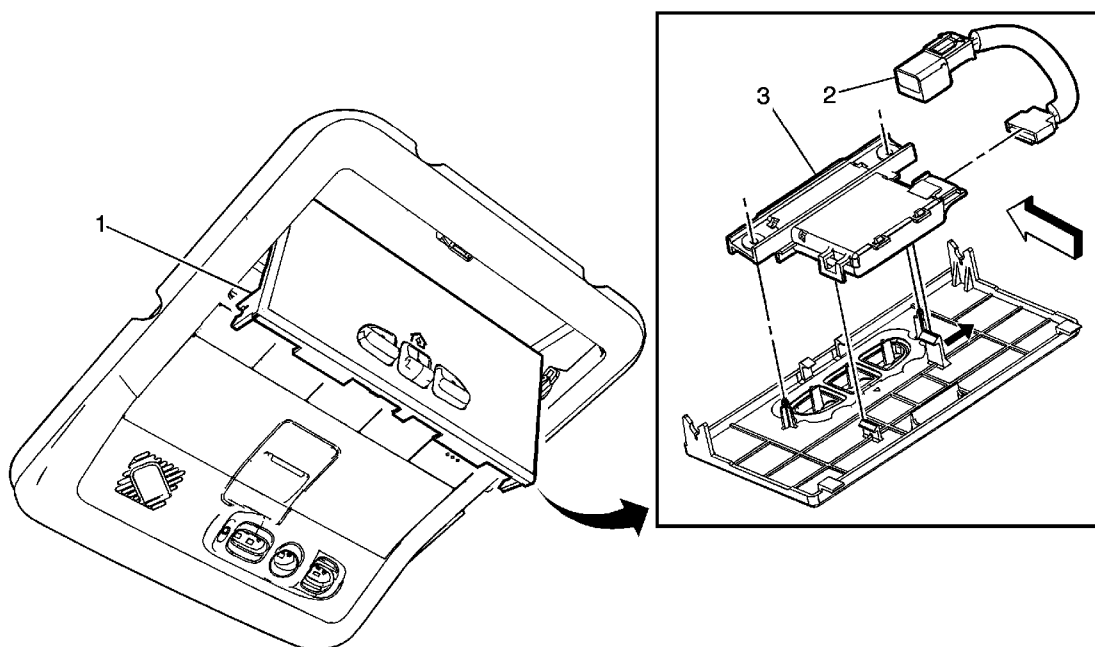
Erasing Channels

To erase programmed channels, hold down the 2 outside buttons until the light on the GDO transmitter begins to flash. Individual channels cannot be erased, but can be reprogrammed using the Garage Door Opener Programming and the Training GDO for Rolling Code Receivers procedures.

Non-Compatible Garage Door Openers

Manufacturer	Model Number
Chamberlain	G-3467
Click Card	ATDG-90
Genie	AR-55
Genie	AR-30
Linear	Code Red
Linear	Moore-o-matic
Linear	DX Format
Micom	Safeway
Pulsar/Allister	20
Skylink	Skylink
Stanley	1048
Stanley	1054
Stanley	1064
Telectron	T-22A
Telectron	T-80
Telectron	T-80G
Telectron	TP-21

Garage Door Opener Transmitter Replacement



Callout	Component Name
1	Garage Door Opener Transmitter Bezel Procedure Carefully use a plastic flat bladed tool to release the bezel door.
2	Garage Door Opener Transmitter Push Button Extension Procedure Disconnect the electrical connector.
3	Garage Door Opener Transmitter Assembly Procedure Refer to the garage door opener programming. Garage Door Opener Programming - Universal

Transmitter Programming

Next Available Slot

Note:

- On some vehicles, keyless entry transmitters may also be programmed using the driver information center (DIC). Refer to the vehicle owners manual for information.
- All transmitters which are to be recognized by the remote control door lock receiver (RCDLR) must be programmed in a single programming sequence. Once the Invalidate All Fobs selection is made, all learned transmitters are erased. If all the existing transmitters associated with the vehicle are not learned at this time, they will become inoperative and require additional programming.
- Do not operate or program the transmitters in the vicinity of other vehicles that are in the keyless entry program mode. This prevents the programming of the transmitters to the incorrect vehicle.
- The keyless entry transmitter used in the Advance 2 Way Remote Start System is unique to the system. When servicing or replacing a transmitter, ensure that the correct transmitter is used. The correct transmitter part number can be found in the Accessory section of the parts catalog. Attempting to replace an Advance 2 Way Remote Start transmitter with a regular service part may result in a failure to program the transmitter.

This procedure will program keyless entry transmitters in sequential order. If two transmitters are currently learned to the vehicle as transmitters 1 and 2, using this procedure will learn the next transmitter as transmitter 3, and so on.

1. With a scan tool, access the Remote Control Door Lock Receiver Module Setup menu. Select Program Key Fobs.
2. Select Next Available Slot. The vehicle chime will sound two times to indicate programming mode has been entered. Follow the on-screen instructions. After each transmitter has been programmed, the vehicle chime will sound to confirm the programming.
3. When all the desired transmitters have been programmed, cycle the ignition from ON to OFF, exit the vehicle, and operate the transmitter functions in order to verify correct system operation.

Invalidate All Fobs

Note:

- On some vehicles, keyless entry transmitters may also be programmed using the driver information center (DIC). Refer to the vehicle owners manual for information.
- All transmitters which are to be recognized by the remote control door lock receiver (RCDLR) must be programmed in a single programming sequence. Once the Invalidate All Fobs selection is made, all learned transmitters are erased. If all the existing transmitters associated with the vehicle are not learned at this time, they will become inoperative and require additional programming.
- Do not operate or program the transmitters in the vicinity of other vehicles that are in the keyless entry program mode. This prevents the programming of the transmitters to the incorrect vehicle.
- The keyless entry transmitter used in the Advance 2 Way Remote Start System is unique to

© 2010 General Motors Corporation. All rights reserved.

the system. When servicing or replacing a transmitter, ensure that the correct transmitter is used. The correct transmitter part number can be found in the Accessory section of the parts catalog. Attempting to replace an Advance 2 Way Remote Start transmitter with a regular service part may result in a failure to program the transmitter.

This procedure will first erase all known keyless entry transmitters. After all transmitters are erased, the procedure will begin to program keyless entry transmitters in sequential order, beginning with transmitter 1.

1. With a scan tool, access the Remote Control Door Lock Receiver Module Setup menu. Select Program Key Fobs.
2. Select Invalidate All Fobs. This will erase all learned transmitters and prepare the RCDLR to learn new transmitters. Follow the on-screen instructions. After each transmitter has been programmed, the vehicle chime will sound to confirm the programming.
3. When all the desired transmitters have been programmed, cycle the ignition from ON to OFF, exit the vehicle, and operate the transmitter functions in order to verify correct system operation.

Transmitter Slot Programming

Note: The keyless entry transmitter used in the Advance 2 Way Remote Start System is unique to the system. When servicing or replacing a transmitter, ensure that the correct transmitter is used. The correct transmitter part number can be found in the Accessory section of the parts catalog. Attempting to replace an Advance 2 Way Remote Start transmitter with a regular service part may result in a failure to program the transmitter.

Transmitter slot programming allows a single transmitter to be programmed into a specific slot without affecting any of the other programmed transmitters. By using slot programming, the transmitter originally programmed to a specific slot is erased and the new transmitter learned in its place.

1. Install a scan tool.
2. Turn ON the ignition with the engine OFF.
3. With the scan tool, select Body.
4. Select Remote Control Door Lock Receiver (RCDLR).
5. Select Module Setup.
6. Select Program Key Fobs.
7. Select the key fob desired to be programmed.
8. Follow the scan tool on screen instructions.
9. Remove the scan tool.
10. Exit the vehicle. Operate all functions on transmitters to verify correct system operation.